



FD. L & TAG LS 4749  
PER C.E.F.B. 331-275

FD. L & TAG LS 4749  
PER C.E.F.B. 331-275

SET S&W  
LS 4016

AVENUE

BEL AIRE

DRIVE

33.43'

34.13'

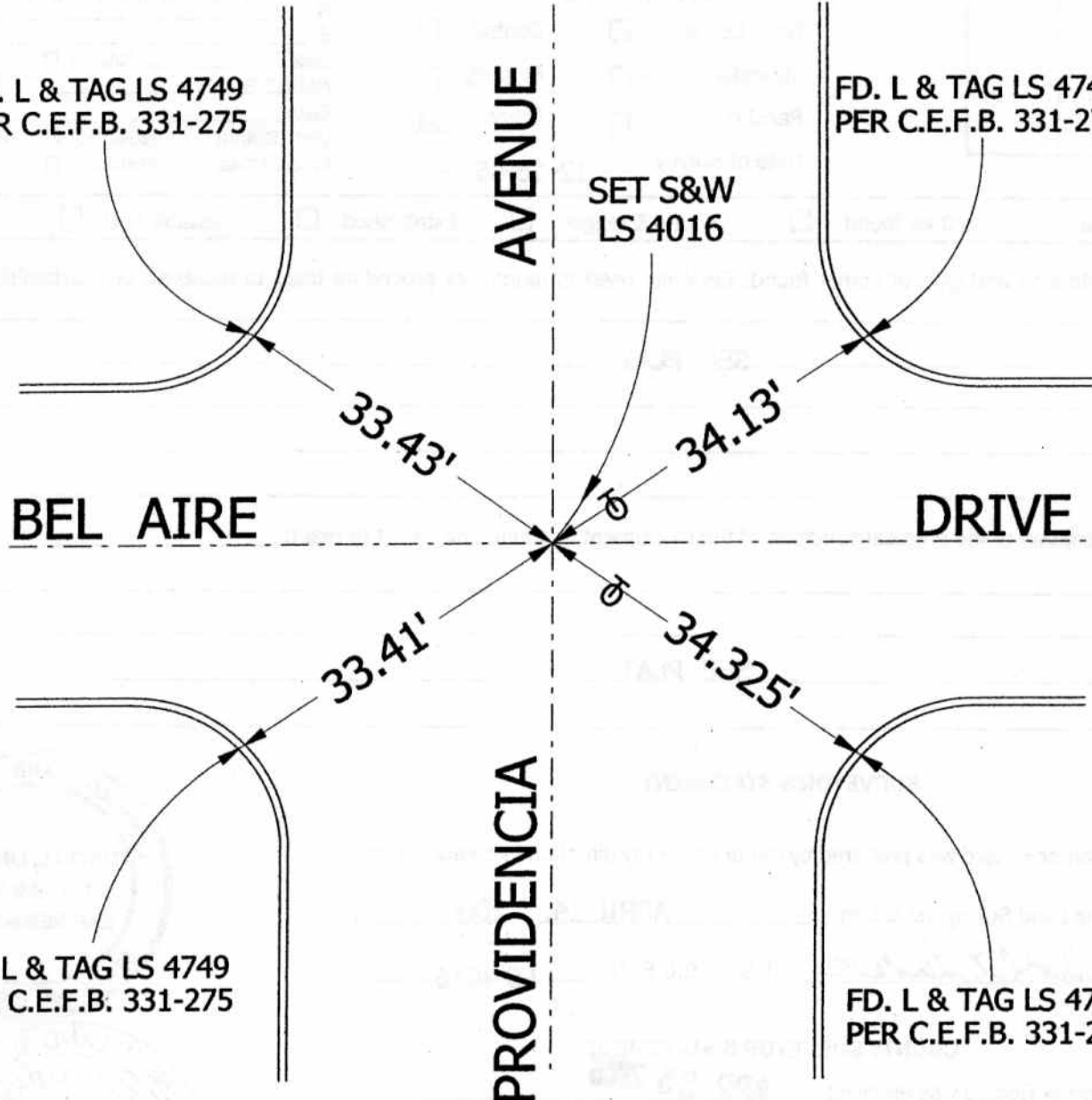
33.41'

34.325'

FD. L & TAG LS 4749  
PER C.E.F.B. 331-275

FD. L & TAG LS 4749  
PER C.E.F.B. 331-275

PROVIDENCIA



# CORNER RECORD

PWFB 1819

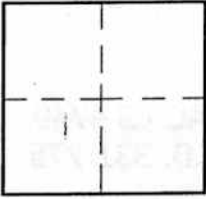
381

Document Number

City of BURBANK

County of Los Angeles, California

Brief Legal Description BEL AIRE DRIVE & PROVIDENCIA AVENUE



### CORNER TYPE

Govt. Corner  Control   
 Meander  Property   
 Rancho  Other   
 Date of Survey 12-16-05

### COORDINATES (Optional)

N. \_\_\_\_\_  
 E. \_\_\_\_\_  
 Zone \_\_\_\_\_ NAD27  NAD83   
 NAD83 Epoch \_\_\_\_\_  
 Elev. \_\_\_\_\_  
 Vert. Datum: NGVD29  NAVD88   
 Meas. Units: Metric  Imperial

Corner - Left as found  Found & tagged  Established  Reestablished  Rebuilt

Identification and type of corner found: Evidence used to identify or procedure used to establish or reestablish the corner:

SEE PLAT

A description of the physical condition of the monument as found and as set or reset:

SEE PLAT

### SURVEYOR'S STATEMENT

This Corner Record was prepared by me or under my direction in conformance with the Land Surveyors' Act on APRIL 14, 2006

Signed David L. Lindell P.L.S. or R.C.E. No. LS 4016



### COUNTY SURVEYOR'S STATEMENT

This Corner Record was received APR 25 2006

and examined and filed MAY 11 2006

Signed Curt M. O'Bryan P.L.S. or R.C.E. No. 6388

Title: DEPUTY COUNTY SURVEYOR



County Surveyor's Comment \_\_\_\_\_

*SMC 5-11-6*