

FD. L & TAG LS 4749  
PER C.E.F.B. 331-279

FD. LEAD, SET  
TAG LS 4016

AVENUE

FD. S&W PER  
CEFB 331-279

56.675'

44.595'

BEL AIRE

DRIVE

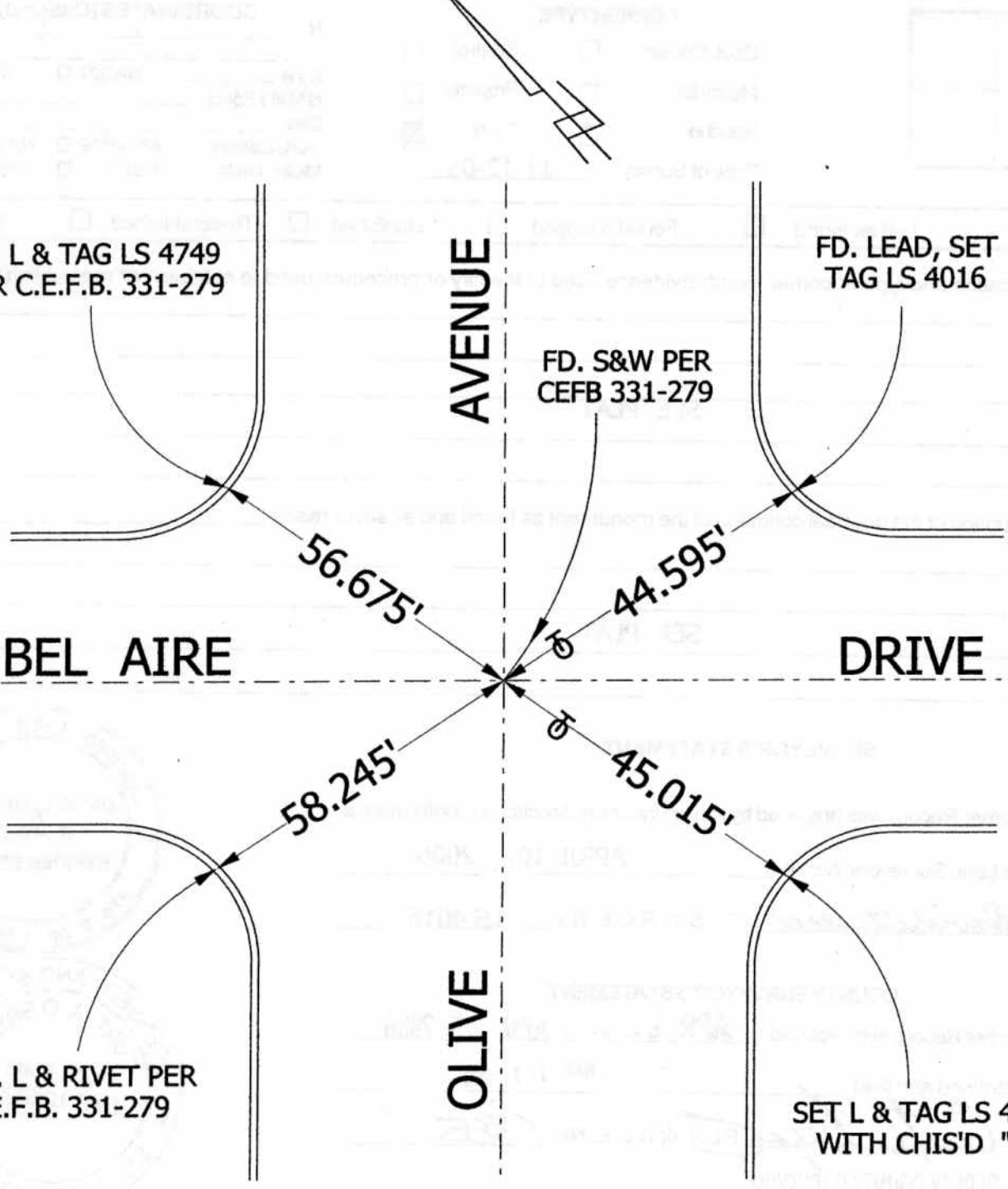
58.245'

45.015'

FD. L & RIVET PER  
C.E.F.B. 331-279

OLIVE

SET L & TAG LS 4016  
WITH CHIS'D "T"



# CORNER RECORD

PWFB 1819

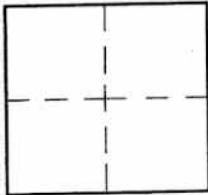
373

Document Number \_\_\_\_\_

City of BURBANK

County of Los Angeles, California

Brief Legal Description OLIVE AVENUE & BEL AIRE DRIVE



### CORNERTYPE

Govt. Corner  Control   
 Meander  Property   
 Rancho  Other   
 Date of Survey 11-12-05

### COORDINATES (Optional)

N. \_\_\_\_\_  
 E. \_\_\_\_\_  
 Zone \_\_\_\_\_ NAD27  NAD83   
 NAD83 Epoch \_\_\_\_\_  
 Elev. \_\_\_\_\_  
 Vert. Datum: NGVD29  NAVD88   
 Meas. Units: Metric  Imperial

Corner - Left as found  Found & tagged  Established  Reestablished  Rebuilt

Identification and type of corner found: Evidence used to identify or procedure used to establish or reestablish the corner:

SEE PLAT

A description of the physical condition of the monument as found and as set or reset:

SEE PLAT

### SURVEYOR'S STATEMENT

This Corner Record was prepared by me or under my direction in conformance with the Land Surveyors' Act on APRIL 10, 2006

Signed David L. Lindell P.L.S. or R.C.E. No. LS 4016



### COUNTY SURVEYOR'S STATEMENT

This Corner Record was received APR 20 2006 APR 25 2006  
 and examined and filed MAY 11 2006

Signed Curt M. O'Bryan P.L.S. or R.C.E. No. 6388

Title: DEPUTY COUNTY SURVEYOR



County Surveyor's Comment \_\_\_\_\_

SM 6 5-11-6