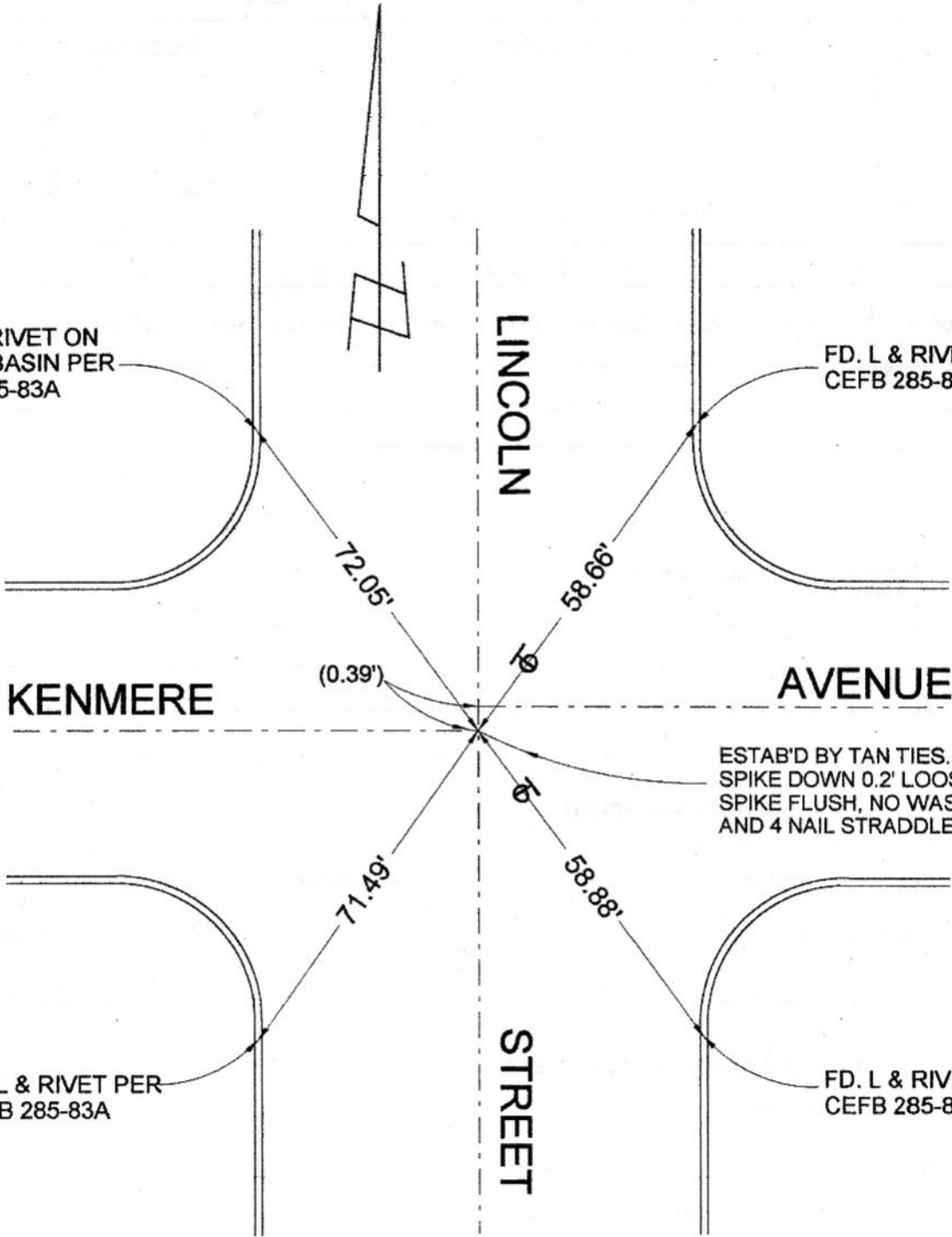


FD. L & RIVET ON  
CATCH BASIN PER  
CEFB 285-83A

FD. L & RIVET PER  
CEFB 285-83A



KENMERE

AVENUE

LINCOLN

STREET

(0.39')

ESTAB'D BY TAN TIES. FD. OLD  
SPIKE DOWN 0.2' LOOSE. SET  
SPIKE FLUSH, NO WASHER,  
AND 4 NAIL STRADDLERS

FD. L & RIVET PER  
CEFB 285-83A

FD. L & RIVET PER  
CEFB 285-83A

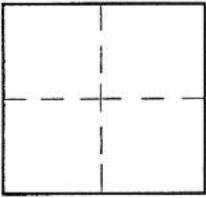
# CORNER RECORD

Document Number \_\_\_\_\_

City of BURBANK

County of Los Angeles, California

Brief Legal Description LINCOLN STREET & KENMERE AVENUE



### CORNER TYPE

Govt. Corner  Control   
 Meander  Property   
 Rancho  Other   
 Date of Survey 1-24-03

### COORDINATES (Optional)

N. \_\_\_\_\_  
 E. \_\_\_\_\_  
 Zone \_\_\_\_\_ NAD27  NAD83   
 NAD83 Epoch \_\_\_\_\_  
 Elev. \_\_\_\_\_  
 Vert. Datum: NGVD29  NAVD88   
 Meas. Units: Metric  Imperial

Corner - Left as found  Found & tagged  Established  Reestablished  Rebuilt

Identification and type of corner found: Evidence used to identify or procedure used to establish or reestablish the corner:

SEE PLAT

A description of the physical condition of the monument as found and as set or reset:

SEE PLAT

### SURVEYOR'S STATEMENT

This Corner Record was prepared by me or under my direction in conformance  
 with the Land Surveyors' Act on MARCH 21, 2003

Signed David L. Lindell P.L.S. or R.C.E. No. LS 4016



### COUNTY SURVEYOR'S STATEMENT

This Corner Record was received \_\_\_\_\_

and examined and filed \_\_\_\_\_

Signed \_\_\_\_\_ P.L.S. or R.C.E. No. \_\_\_\_\_

Title: \_\_\_\_\_

County Surveyor's Comment \_\_\_\_\_