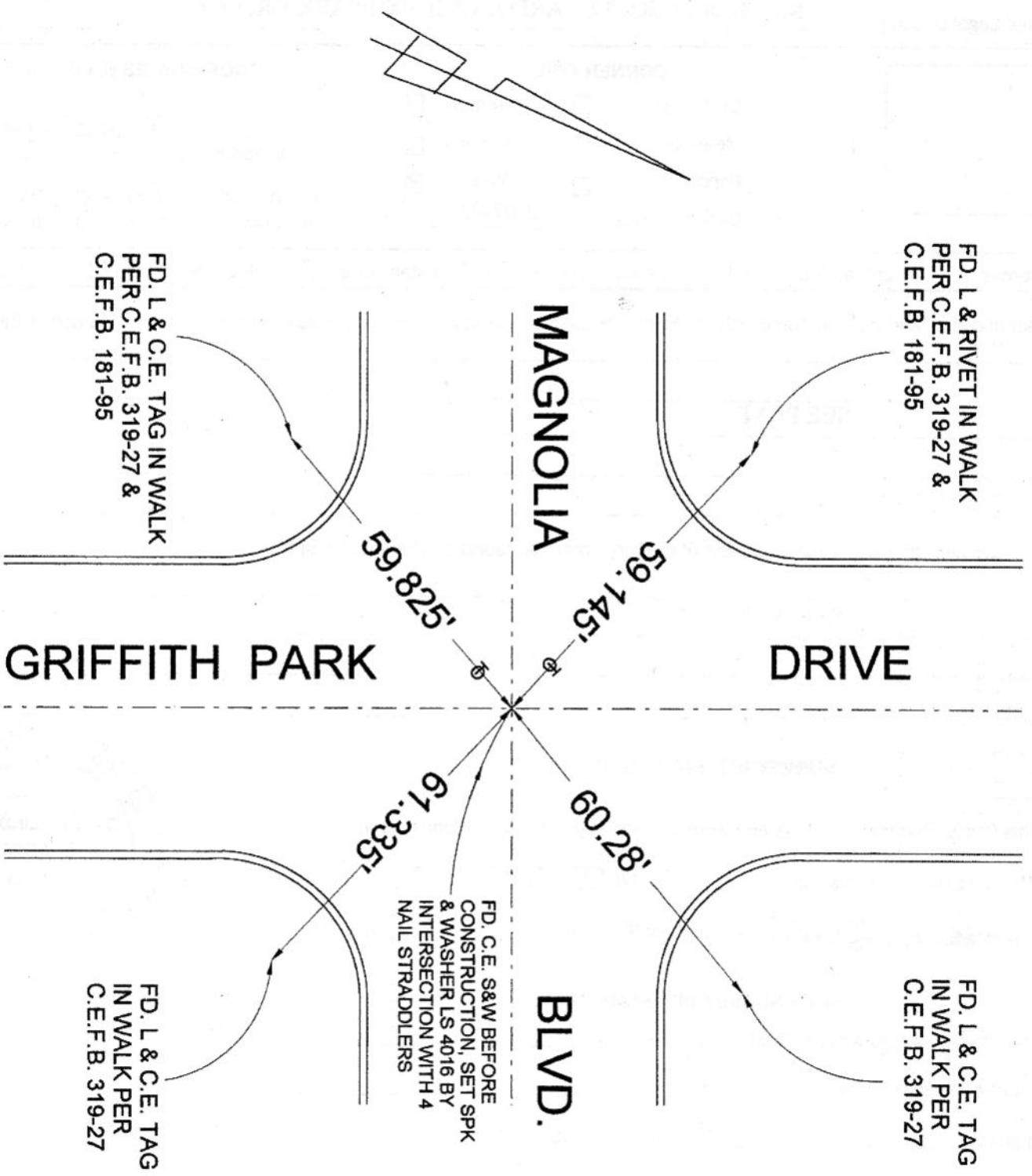


CORNER RECORD



FD. L & C.E. TAG IN WALK  
 PER C.E.F.B. 319-27 &  
 C.E.F.B. 181-95

FD. L & RIVET IN WALK  
 PER C.E.F.B. 319-27 &  
 C.E.F.B. 181-95

GRIFFITH PARK  
 DRIVE

DRIVE

59.825'

59.745'

60.28'

67.335'

FD. C.E. S&W BEFORE  
 CONSTRUCTION, SET SPK  
 & WASHER LS 4016 BY  
 INTERSECTION WITH 4  
 NAIL STRADDLERS

MAGNOLIA

BLVD.

FD. L & C.E. TAG  
 IN WALK PER  
 C.E.F.B. 319-27

FD. L & C.E. TAG  
 IN WALK PER  
 C.E.F.B. 319-27

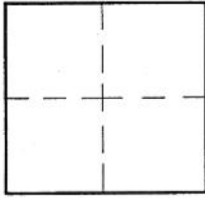
# CORNER RECORD

Document Number \_\_\_\_\_

City of BURBANK

County of Los Angeles, California

Brief Legal Description MAGNOLIA BOULEVARD & GRIFFITH PARK DRIVE



### CORNER TYPE

Govt. Corner  Control   
 Meander  Property   
 Rancho  Other   
 Date of Survey 12-07-02

### COORDINATES (Optional)

N. \_\_\_\_\_  
 E. \_\_\_\_\_  
 Zone \_\_\_\_\_ NAD27  NAD83   
 NAD83 Epoch \_\_\_\_\_  
 Elev. \_\_\_\_\_  
 Vert. Datum: NGVD29  NAVD88   
 Meas. Units: Metric  Imperial

Corner - Left as found  Found & tagged  Established  Reestablished  Rebuilt

Identification and type of corner found: Evidence used to identify or procedure used to establish or reestablish the corner:

SEE PLAT

A description of the physical condition of the monument as found and as set or reset:

SEE PLAT

### SURVEYOR'S STATEMENT

This Corner Record was prepared by me or under my direction in conformance with the Land Surveyors' Act on DECEMBER 7, 2002.

Signed David L. Lindell P.L.S. or R.C.E. No. LS 4016



### COUNTY SURVEYOR'S STATEMENT

This Corner Record was received \_\_\_\_\_ and examined and filed \_\_\_\_\_

Signed \_\_\_\_\_ P.L.S. or R.C.E. No. \_\_\_\_\_

Title: \_\_\_\_\_

County Surveyor's Comment \_\_\_\_\_