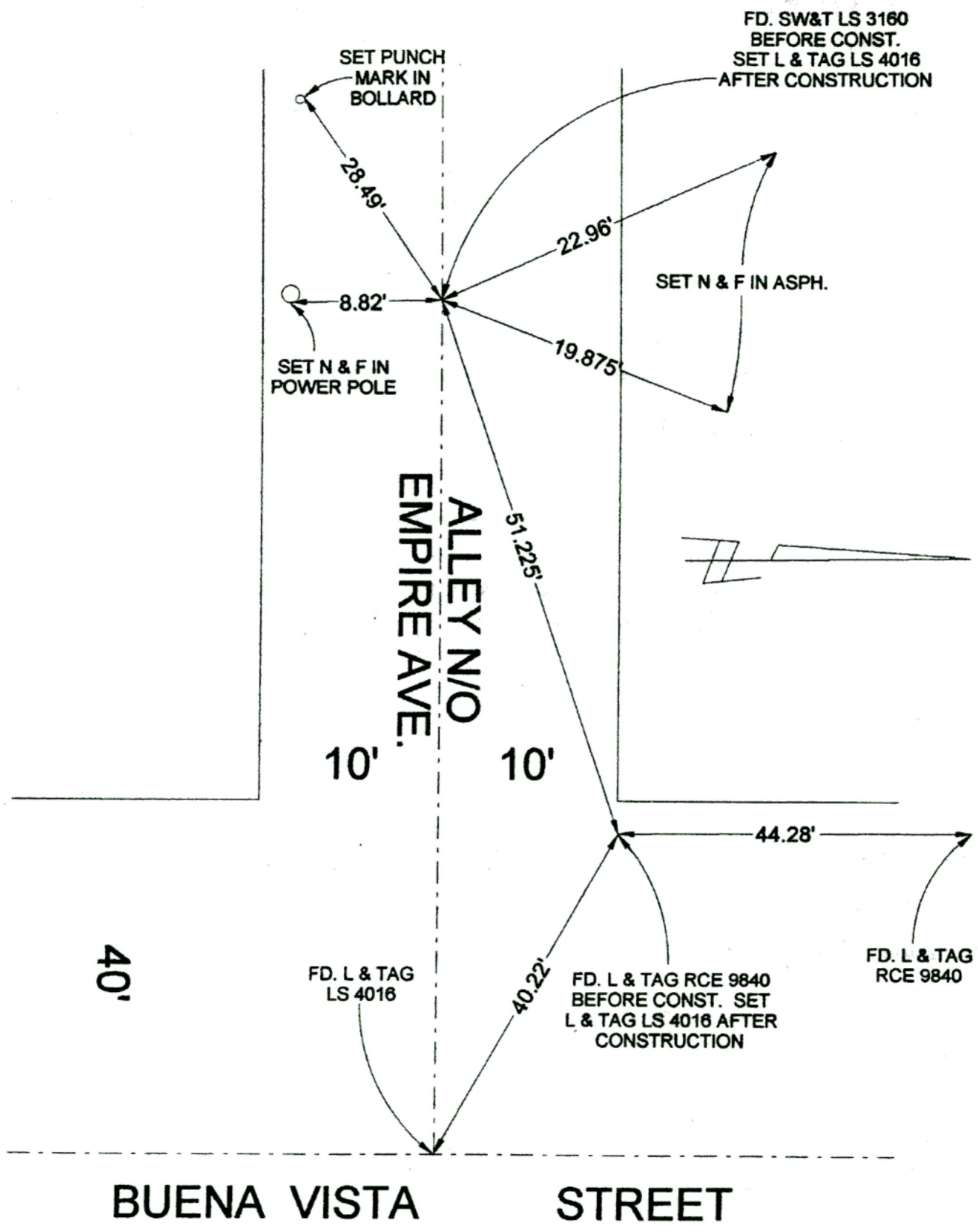


FB 335 P.415



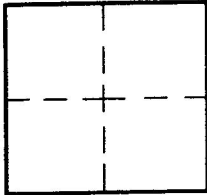
CORNER RECORD

Document Number 398

City of BURBANK

County of Los Angeles, California

Brief Legal Description ALLEY N/O EMPIRE AV. & POINTS W/O BUENA VISTA ST.



CORNER TYPE

Govt. Corner [] Control []
Meander [] Property []
Rancho [] Other [X]
Date of Survey 9-27-05

COORDINATES (Optional)

N.
E.
Zone NAD27 [] NAD83 []
NAD83 Epoch
Elev.
Vert. Datum: NGVD29 [] NAVD88 []
Meas. Units: Metric [] Imperial []

Corner - Left as found [] Found & tagged [] Established [] Reestablished [] Rebuilt [X]

Identification and type of corner found: Evidence used to identify or procedure used to establish or reestablish the corner:

SEE PLAT

A description of the physical condition of the monument as found and as set or reset:

SEE PLAT

SURVEYOR'S STATEMENT

This Corner Record was prepared by me or under my direction in conformance with the Land Surveyors' Act on OCTOBER 8, 2005

Signed David L. Lindell P.L.S. or R.C.E. No. LS 4016



COUNTY SURVEYOR'S STATEMENT

This Corner Record was received and examined and filed

Signed Curt M. O'Bryan P.L.S. or R.C.E. No. 6388

Title: DEPUTY COUNTY SURVEYOR



County Surveyor's Comment

Handwritten signature and date: JM 6 10-27-05