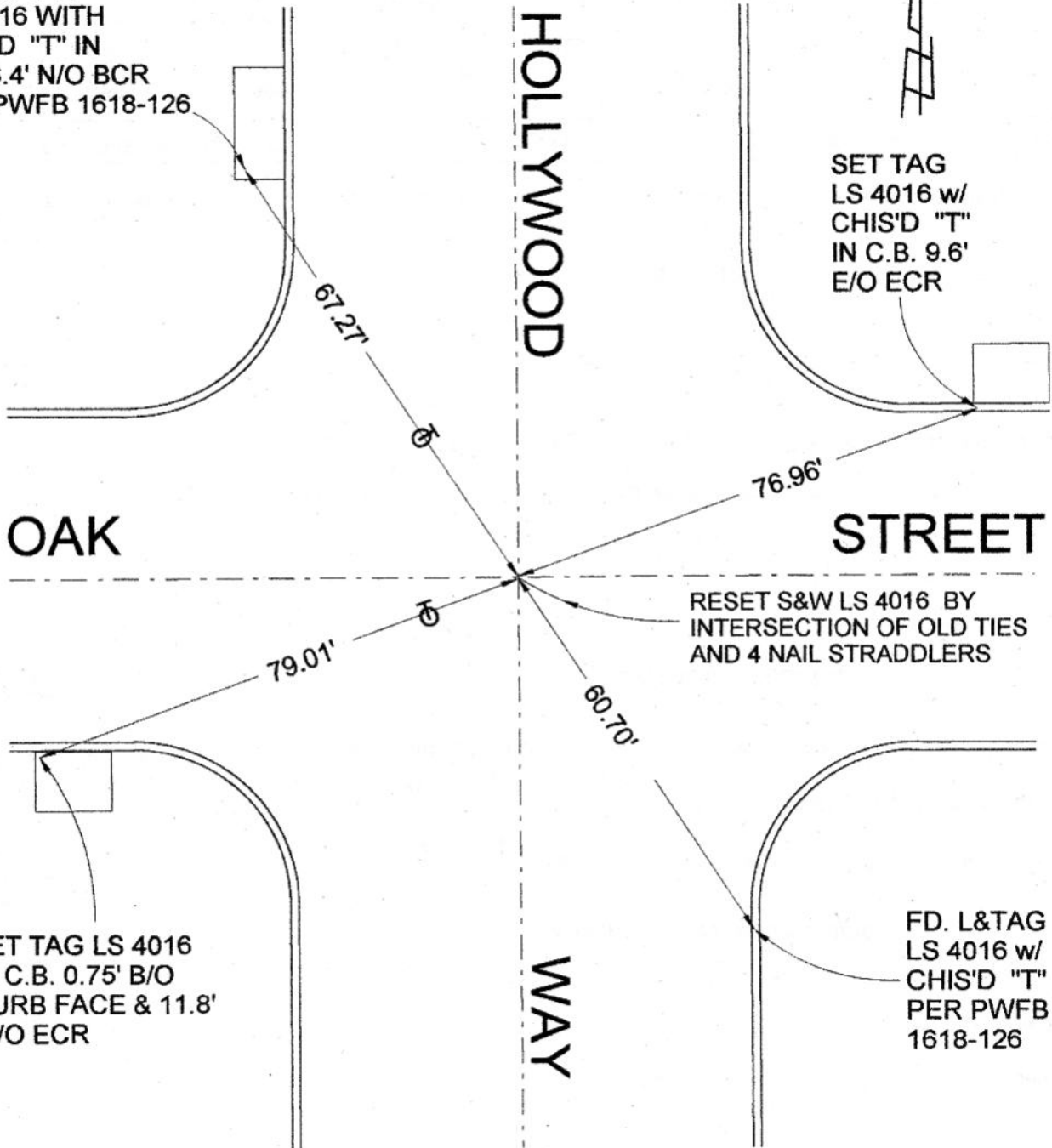


FB-335 P. 395

FD. L & TAG
LS 4016 WITH
CHIS'D "T" IN
C.B. 6.4' N/O BCR
PER PWFB 1618-126

SET TAG
LS 4016 w/
CHIS'D "T"
IN C.B. 9.6'
E/O ECR



RESET S&W LS 4016 BY
INTERSECTION OF OLD TIES
AND 4 NAIL STRADDLERS

SET TAG LS 4016
IN C.B. 0.75' B/O
CURB FACE & 11.8'
W/O ECR

FD. L&TAG
LS 4016 w/
CHIS'D "T"
PER PWFB
1618-126

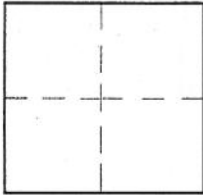
CORNER RECORD

Document Number _____

City of BURBANK

County of Los Angeles, California

Brief Legal Description HOLLYWOOD WAY & OAK STREET



CORNER TYPE

- Govt. Corner Control
- Meander Property
- Rancho Other
- Date of Survey 1-12-04

COORDINATES (Optional)

- N. _____
- E. _____
- Zone _____ NAD27 NAD83
- NAD83 Epoch _____
- Elev. _____
- Vert. Datum: NGVD29 NAVD88
- Meas. Units: Metric Imperial

Corner - Left as found Found & tagged Established Reestablished Rebuilt

Identification and type of corner found: Evidence used to identify or procedure used to establish or reestablish the corner:

SEE PLAT

A description of the physical condition of the monument as found and as set or reset:

SEE PLAT

SURVEYOR'S STATEMENT

This Corner Record was prepared by me or under my direction in conformance with the Land Surveyors' Act on APRIL 9, 2004

Signed David L. Lindell P.L.S. or R.C.E. No. LS 4016



COUNTY SURVEYOR'S STATEMENT

This Corner Record was received _____

and examined and filed _____

Signed _____ P.L.S. or R.C.E. No. _____

Title: _____

County Surveyor's Comment _____