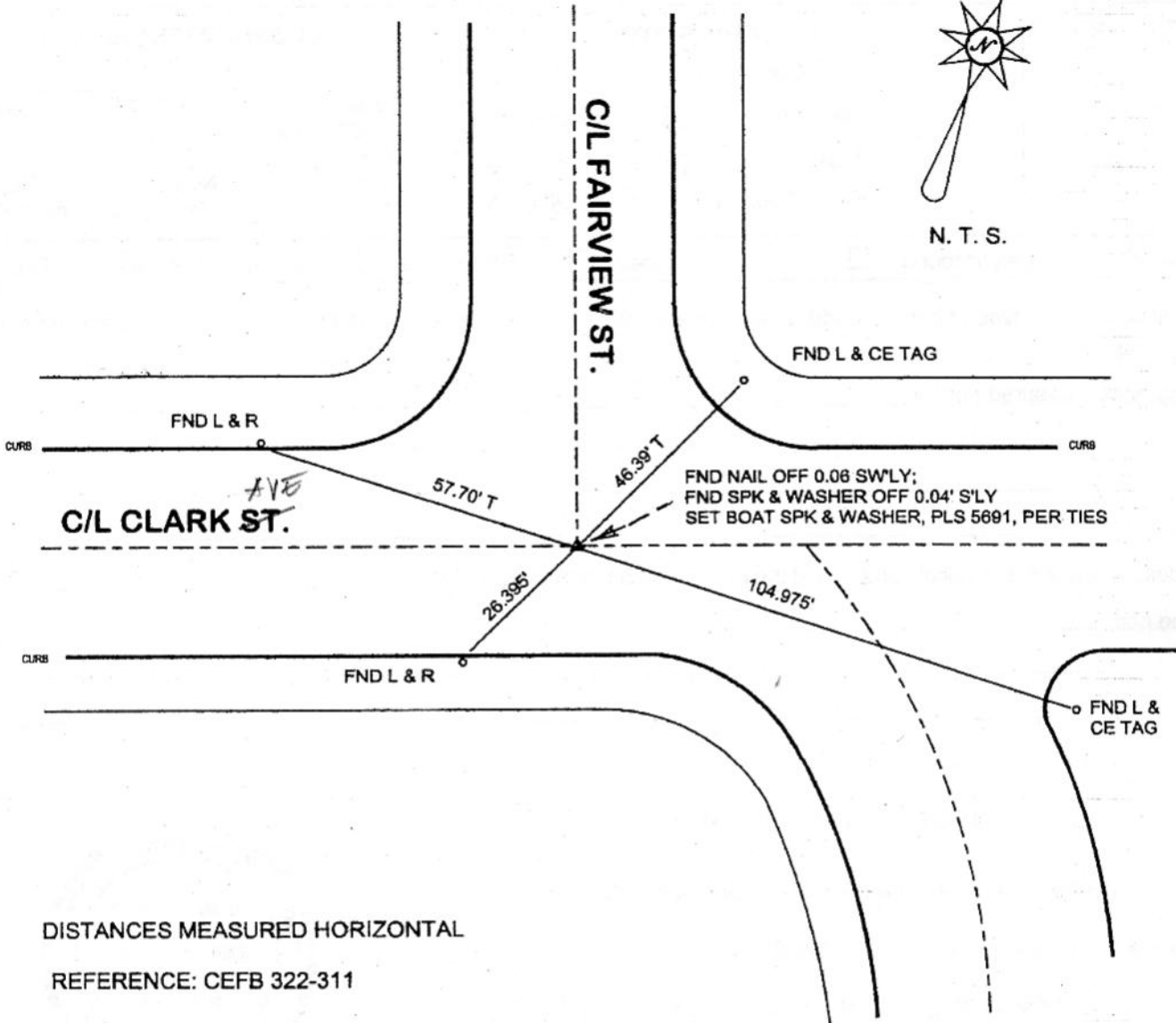


FB-335 p. 377



N. T. S.



DISTANCES MEASURED HORIZONTAL  
REFERENCE: CEFB 322-311

DATE: AUGUST 18, 2003  
SURVEYED BY: J. P. OSTLY  
P. L. S. 5691

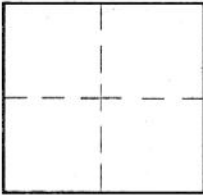
# CORNER RECORD

Document Number \_\_\_\_\_

City of BURBANK

County of Los Angeles, California

Brief Legal Description CLARK ST. & FAIRVIEW ST. - C/L MONUMENT PRESERVATION



### CORNERTYPE

Govt. Corner  Control   
 Meander  Property   
 Rancho  Other   
 Date of Survey 18-Aug-03

### COORDINATES (Optional)

N. \_\_\_\_\_  
 E. \_\_\_\_\_  
 Zone \_\_\_\_\_ NAD27  NAD83   
 NAD83 Epoch \_\_\_\_\_  
 Elev. \_\_\_\_\_  
 Vert. Datum: NGVD29  NAVD88   
 Meas. Units: Metric  Imperial

Corner - Left as found  Found & tagged  Established  Reestablished  Rebuilt

Identification and type of corner found: Evidence used to identify or procedure used to establish or reestablish the corner:

see plat;

distances measured horizontal;

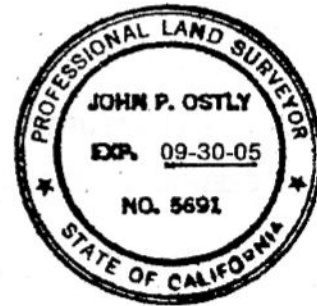
A description of the physical condition of the monument as found and as set or reset: \_\_\_\_\_

see plat;

### SURVEYOR'S STATEMENT

This Corner Record was prepared by me or under my direction in conformance  
 with the Land Surveyors' Act on October 5, 2003

Signed *John P. Ostly* P.L.S. or R.C.E. No. 5691



### COUNTY SURVEYOR'S STATEMENT

This Corner Record was received OCT 09 2003

and examined and filed OCT 20 2003

Signed *Douglas W. Joslin* P.L.S. or R.C.E. No. \_\_\_\_\_

Title: DEPUTY COUNTY SURVEYOR



County Surveyor's Comment OCT 15 2003 Tjt