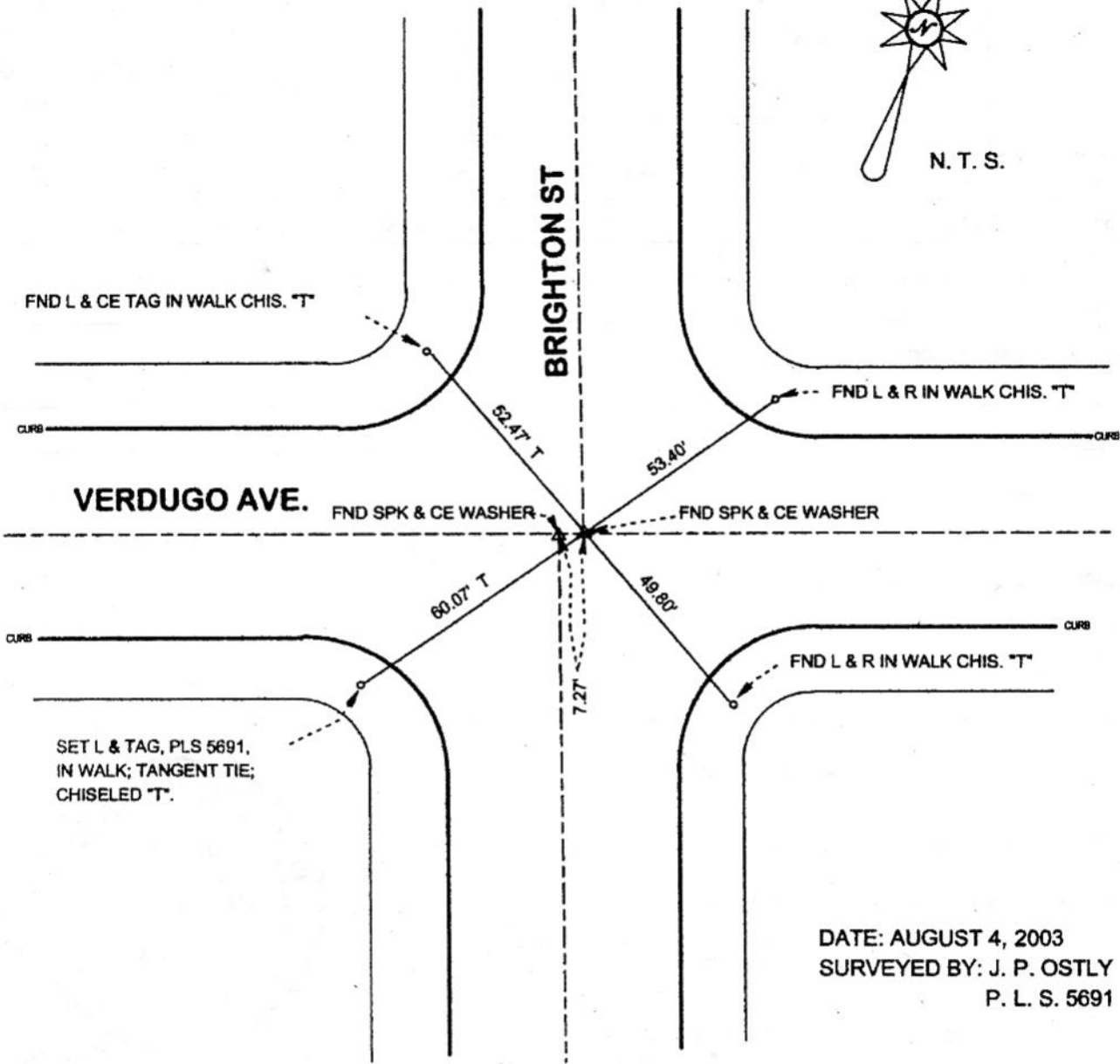
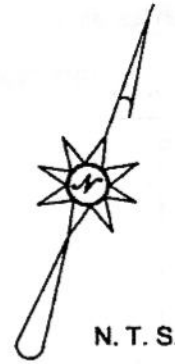


FB-995 P. 351



DISTANCES MEASURED HORIZONTAL

REFERENCE: CEFB 322-371

DATE: AUGUST 4, 2003
 SURVEYED BY: J. P. OSTLY
 P. L. S. 5691

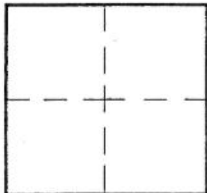
CORNER RECORD

Document Number 371

City of BURBANK

County of Los Angeles, California

Brief Legal Description VERDUGO AVE. & BRIGHTON ST.. - C/L MONUMENT PRESERVATION



CORNER TYPE

Govt. Corner Control
 Meander Property
 Rancho Other
 Date of Survey August 4, 2003

COORDINATES (Optional)

N. _____
 E. _____
 Zone _____ NAD27 NAD83
 NAD83 Epoch _____
 Elev. _____
 Vert. Datum: NGVD29 NAVD88
 Meas. Units: Metric Imperial

Corner - Left as found Found & tagged Established Reestablished Rebuilt

Identification and type of corner found: Evidence used to identify or procedure used to establish or reestablish the corner:

see plat;

distances measured horizontal;

A description of the physical condition of the monument as found and as set or reset: _____

see plat;

SURVEYOR'S STATEMENT

This Corner Record was prepared by me or under my direction in conformance
 with the Land Surveyors' Act on August 10, 2003

Signed *John P. Ostly* (P.L.S. or R.C.E. No. 5691)



COUNTY SURVEYOR'S STATEMENT

This Corner Record was received OCT 09 2003

and examined and filed OCT 20 2003

Signed *Douglas W. Joslin* P.L.S. or R.C.E. No. _____

DEPUTY COUNTY SURVEYOR

Title: _____

County Surveyor's Comment OCT 15 2003 *th*

