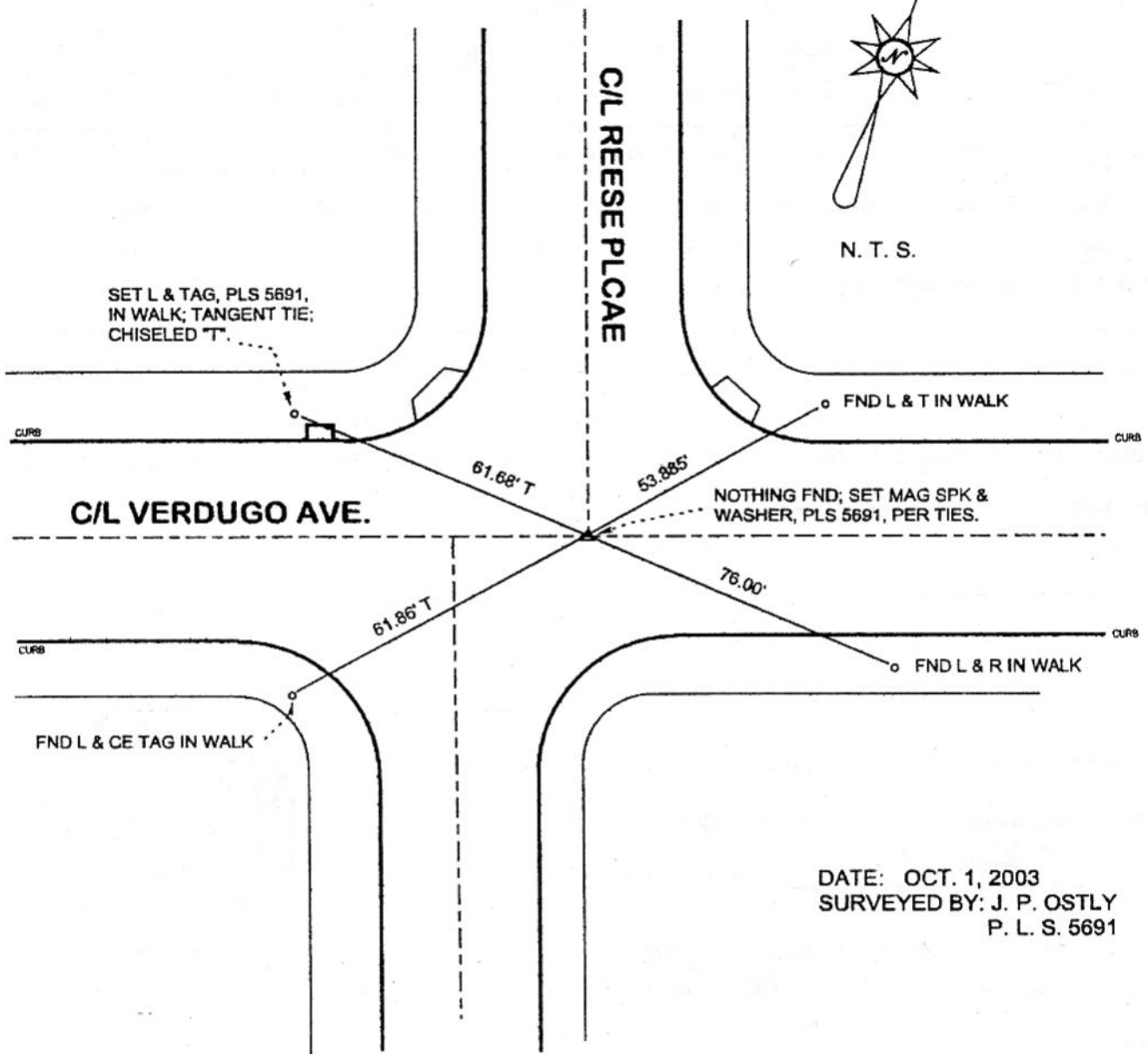


FB-335 P. 347



N. T. S.



SET L & TAG, PLS 5691,
IN WALK; TANGENT TIE;
CHISELED T.

C/L VERDUGO AVE.

C/L REESE PLCAE

FND L & T IN WALK

NOTHING FND; SET MAG SPK &
WASHER, PLS 5691, PER TIES.

FND L & R IN WALK

FND L & CE TAG IN WALK

DATE: OCT. 1, 2003
SURVEYED BY: J. P. OSTLY
P. L. S. 5691

DISTANCES MEASURED HORIZONTAL.
REFERENCE: CEFB 322-363

CORNER RECORD

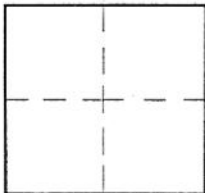
Document Number

379

City of BURBANK

County of Los Angeles, California

Brief Legal Description VERDUGO AVE. & REESE PL. - C/L MONUMENT PRESERVATION



CORNER TYPE

Govt. Corner Control
 Meander Property
 Rancho Other
 Date of Survey 1-Oct-03

COORDINATES (Optional)

N. _____
 E. _____
 Zone _____ NAD27 NAD83
 NAD83 Epoch _____
 Elev. _____
 Vert. Datum: NGVD29 NAVD88
 Meas. Units: Metric Imperial

Corner - Left as found Found & tagged Established Reestablished Rebuilt

Identification and type of corner found: Evidence used to identify or procedure used to establish or reestablish the corner:

~~see plat;~~

~~distances measured horizontal;~~

A description of the physical condition of the monument as found and as set or reset:

~~see plat;~~

SURVEYOR'S STATEMENT

This Corner Record was prepared by me or under my direction in conformance
 with the Land Surveyors' Act on October 7, 2003

Signed *John P. Ostly* P.L.S. or R.C.E. No. 5691



COUNTY SURVEYOR'S STATEMENT

This Corner Record was received OCT 09 2003

and examined and filed OCT 20 2003

Signed *Douglas W. Joslin* P.L.S. or R.C.E. No. _____

Title: DEPUTY COUNTY SURVEYOR

County Surveyor's Comment OCT 15 2003 TH

