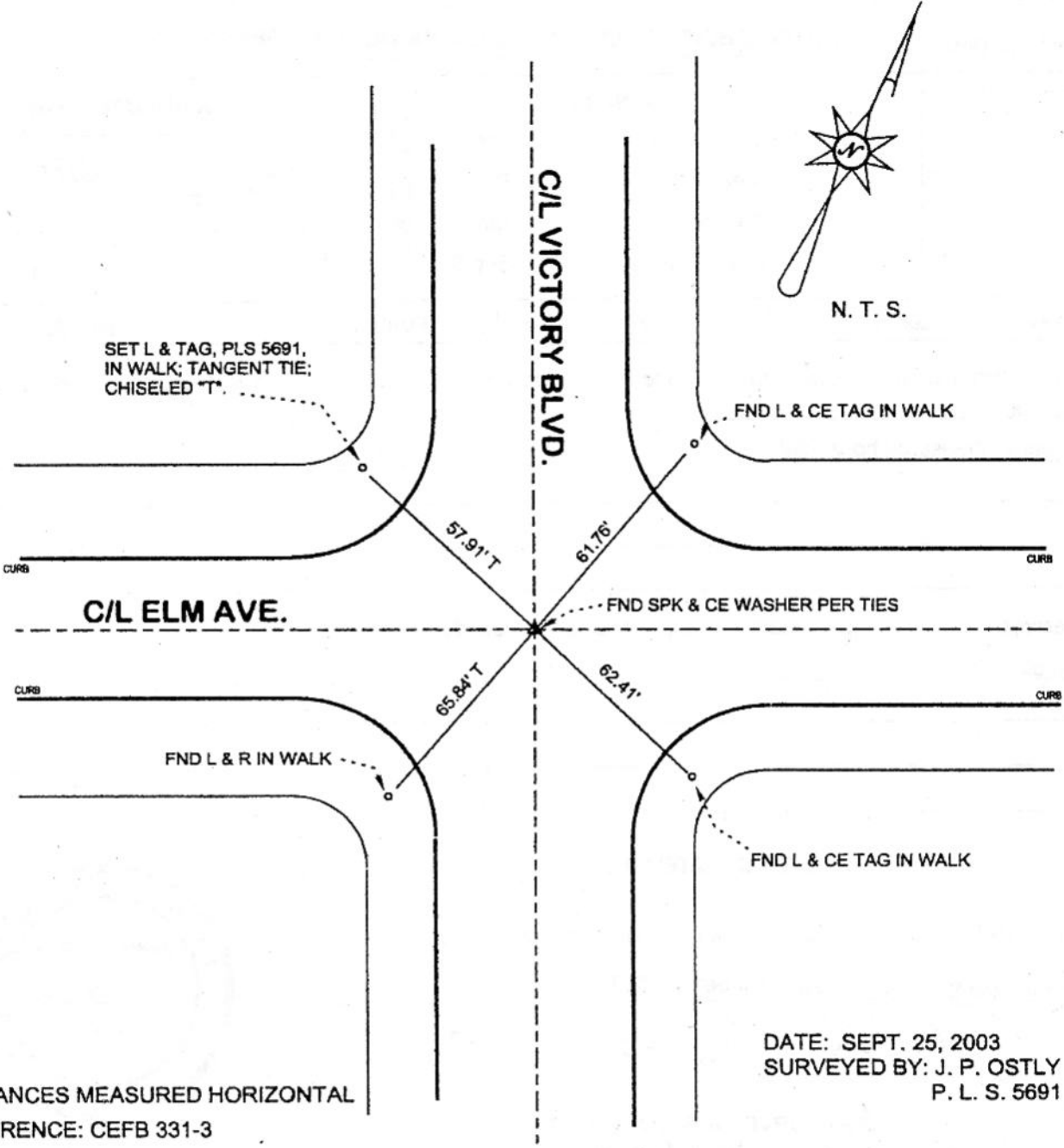


FB-335 P. 345



SET L & TAG, PLS 5691,
IN WALK; TANGENT TIE;
CHISELED "T".

N. T. S.

FND L & CE TAG IN WALK

C/L ELM AVE.

FND SPK & CE WASHER PER TIES

FND L & R IN WALK

FND L & CE TAG IN WALK

DISTANCES MEASURED HORIZONTAL
REFERENCE: CEFB 331-3

DATE: SEPT. 25, 2003
SURVEYED BY: J. P. OSTLY
P. L. S. 5691

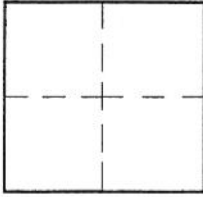
CORNER RECORD

Document Number 530

City of BURBANK

County of Los Angeles, California

Brief Legal Description VICTORY BLVD. & ELM AVE. - C/L MONUMENT PRESERVATION



CORNER TYPE

Govt. Corner [] Control []
Meander [] Property []
Rancho [] Other [X]
Date of Survey 25-Sep-03

COORDINATES (Optional)

N.
E.
Zone NAD27 [] NAD83 []
NAD83 Epoch
Elev.
Vert. Datum: NGVD29 [] NAVD88 []
Meas. Units: Metric [] Imperial []

Corner - Left as found [] Found & tagged [] Established [] Reestablished [X] Rebuilt []

Identification and type of corner found: Evidence used to identify or procedure used to establish or reestablish the corner: see plat;

distances measured horizontal;

A description of the physical condition of the monument as found and as set or reset:

see plat;

SURVEYOR'S STATEMENT

This Corner Record was prepared by me or under my direction in conformance with the Land Surveyors' Act on October 6, 2003

Signed [Signature] (P.L.S.) or R.C.E. No. 5691



COUNTY SURVEYOR'S STATEMENT

This Corner Record was received OCT 09 2003

and examined and filed OCT 20 2003

Signed [Signature] P.L.S. or R.C.E. No.
DEPUTY COUNTY SURVEYOR



Title:
County Surveyor's Comment OCT 15 2003 TH