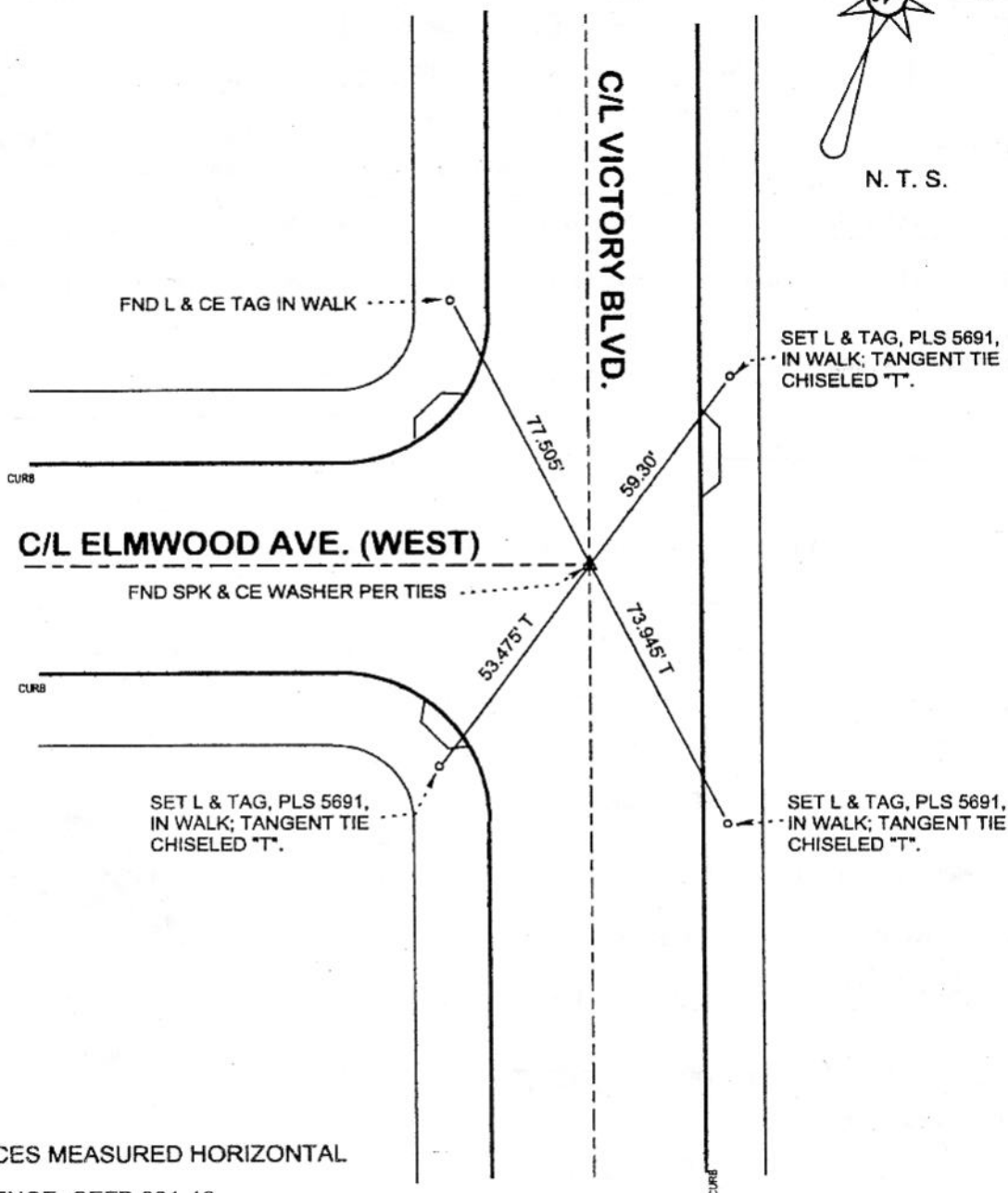


FB-335 P. 343



N. T. S.



DISTANCES MEASURED HORIZONTAL

REFERENCE: CEFB 331-13
331-19
21-97

DATE: SEPT. 25, 2003
SURVEYED BY: J. P. OSTLY
P. L. S. 5691

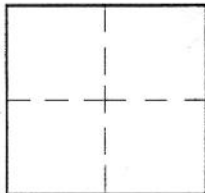
CORNER RECORD

Document Number 533

City of BURBANK

County of Los Angeles, California

Brief Legal Description VICTORY BLVD. & ELMWOOD AVE. (WEST). - C/L MONUMENT PRESERVATION



CORNERTYPE

Govt. Corner Control
 Meander Property
 Rancho Other
 Date of Survey 25-Sep-03

COORDINATES (Optional)

N. _____
 E. _____
 Zone _____ NAD27 NAD83
 NAD83 Epoch _____
 Elev. _____
 Vert. Datum: NGVD29 NAVD88
 Meas. Units: Metric Imperial

Corner - Left as found Found & tagged Established Reestablished Rebuilt

Identification and type of corner found: Evidence used to identify or procedure used to establish or reestablish the corner:

see plat;

distances measured horizontal;

A description of the physical condition of the monument as found and as set or reset: _____

see plat;

SURVEYOR'S STATEMENT

This Corner Record was prepared by me or under my direction in conformance
 with the Land Surveyors' Act on October 6, 2003

Signed [Signature] P.L.S. or R.C.E. No. 5691



COUNTY SURVEYOR'S STATEMENT

This Corner Record was received OCT 09 2003

and examined and filed OCT 20 2003

Signed Douglas W. Joslin P.L.S. or R.C.E. No. _____

Title: DEPUTY COUNTY SURVEYOR

County Surveyor's Comment OCT 15 2003 TH

