

FB-335 P. 305

Cont. on 56-33

VII

WALLACE RD AUG 1957  
to Wallace

LAKE ST HAS BEEN RESURFACED

291.20 MEAS.  
291.22 ADJ PER CENT

236.95 PER  
A22.001-149

3005  
Per A22.001-148

LAKE ST  
N49°46'00"W

11420.18  
Set P.P.O.'S on N.M. Rim

NOTE:  
From 3pk  
@ Sta. 5100  
to E. Fwy  
Meas. 240.07

$\Delta = 116^{\circ}11'09"$   
 $R = 25$   
 $T = 40.15$   
 $L = 50.70$

320.18 Meas.  
ELM CT  
N41°15'20"E

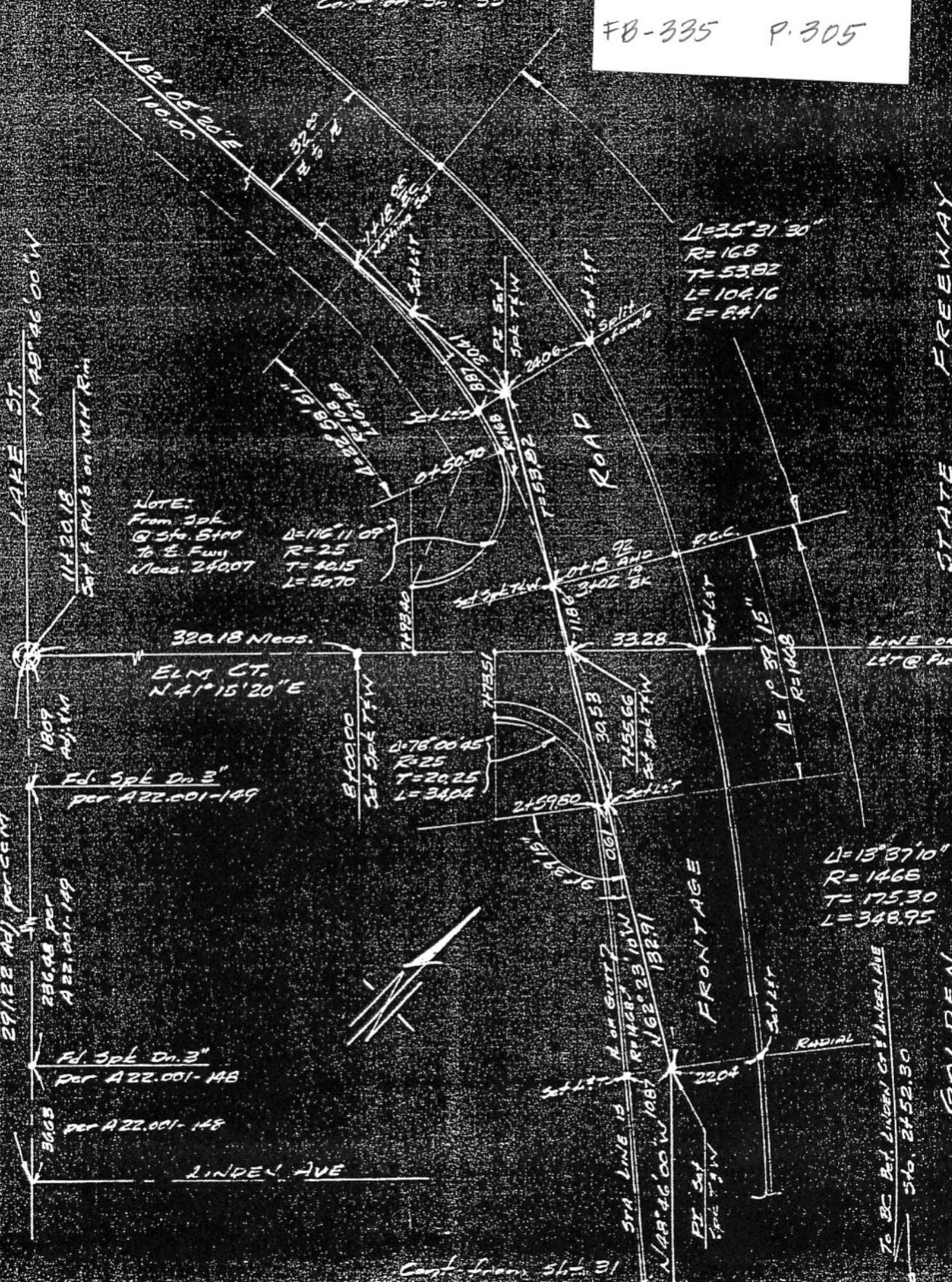
1809  
ADJ. 114  
Fd. 3pk On 3"  
Per A22.001-149

$\Delta = 76^{\circ}00'45"$   
 $R = 25$   
 $T = 20.25$   
 $L = 34.04$

$\Delta = 13^{\circ}37'10"$   
 $R = 1466$   
 $T = 175.30$   
 $L = 348.95$

LINDEN AVE

Cont. from 56-31



STATE FREEWAY

GOLDEN

To B.C. Rd. Linden Ct & Linden Ave  
Sta. 2452.30