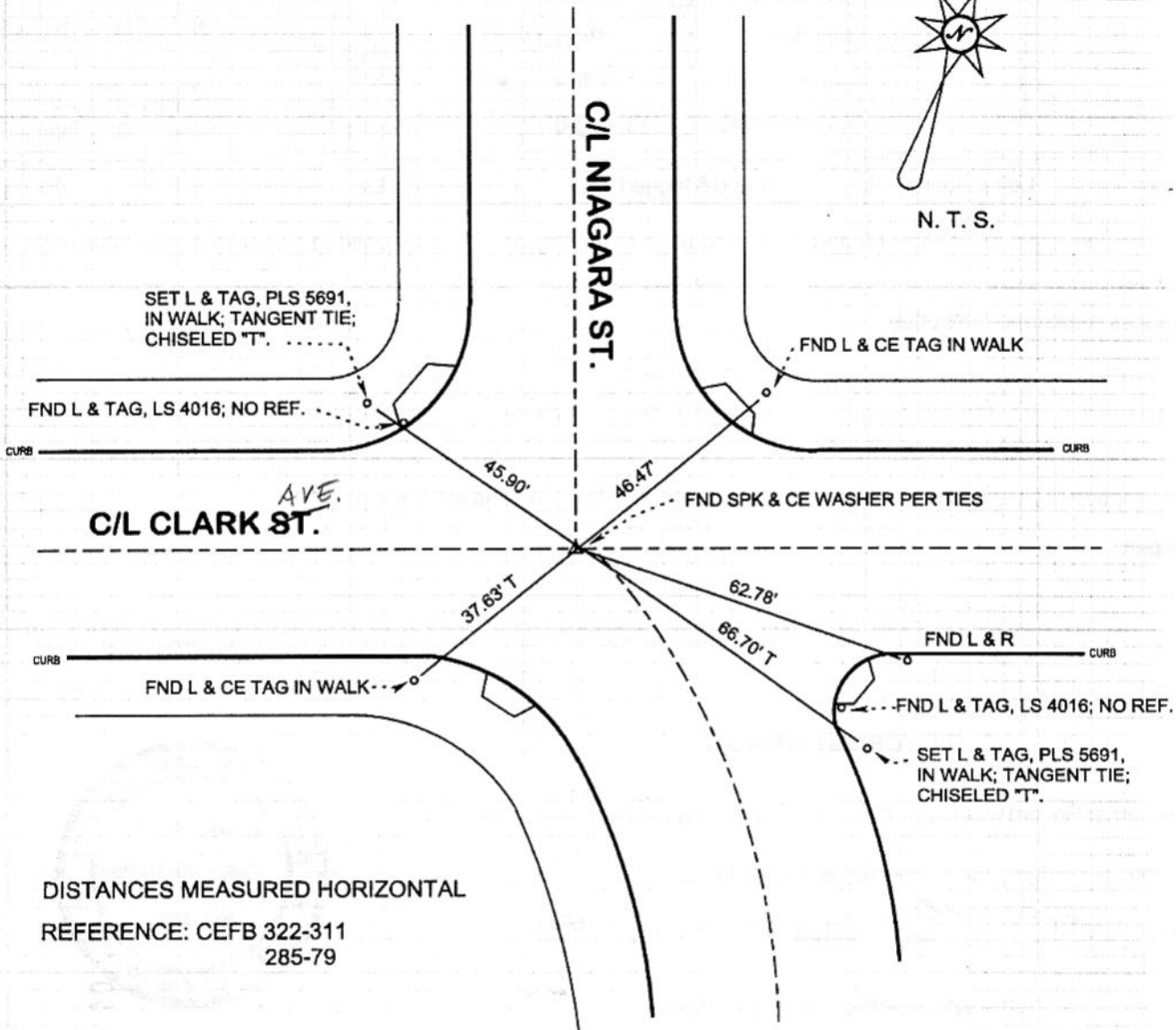


FB-335 P. 293



N. T. S.



SET L & TAG, PLS 5691,
IN WALK; TANGENT TIE;
CHISELED "T".

FND L & TAG, LS 4016; NO REF.

FND L & CE TAG IN WALK

AVE.
C/L CLARK ST.

C/L NIAGARA ST.

FND SPK & CE WASHER PER TIES

FND L & R

FND L & CE TAG IN WALK

FND L & TAG, LS 4016; NO REF.

SET L & TAG, PLS 5691,
IN WALK; TANGENT TIE;
CHISELED "T".

DISTANCES MEASURED HORIZONTAL
REFERENCE: CEFB 322-311
285-79

DATE: AUGUST 18, 2003
SURVEYED BY: J. P. OSTLY
P. L. S. 5691

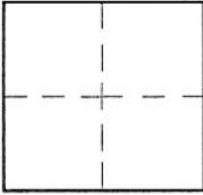
CORNER RECORD

Document Number _____

City of BURBANK

County of Los Angeles, California

Brief Legal Description CLARK ST. & NIAGARA ST. - C/L MONUMENT PRESERVATION



CORNERTYPE

Govt. Corner Control
 Meander Property
 Rancho Other
 Date of Survey 18-Aug-03

COORDINATES (Optional)

N. _____
 E. _____
 Zone _____ NAD27 NAD83
 NAD83 Epoch _____
 Elev. _____
 Vert. Datum: NGVD29 NAVD88
 Meas. Units: Metric Imperial

Corner - Left as found Found & tagged Established Reestablished Rebuilt

Identification and type of corner found: Evidence used to identify or procedure used to establish or reestablish the corner:

see plat;

distances measured horizontal;

A description of the physical condition of the monument as found and as set or reset:

see plat;

SURVEYOR'S STATEMENT

This Corner Record was prepared by me or under my direction in conformance
 with the Land Surveyors' Act on October 22, 2003

Signed *John P. Ostly* P.L.S. or R.C.E. No. 5691



COUNTY SURVEYOR'S STATEMENT

This Corner Record was received _____

and examined and filed _____

Signed _____ P.L.S. or R.C.E. No. _____

Title: _____

County Surveyor's Comment _____

04 JAN 26 PM 2:05

ENGINEERING DIVISION
CITY OF BURBANK