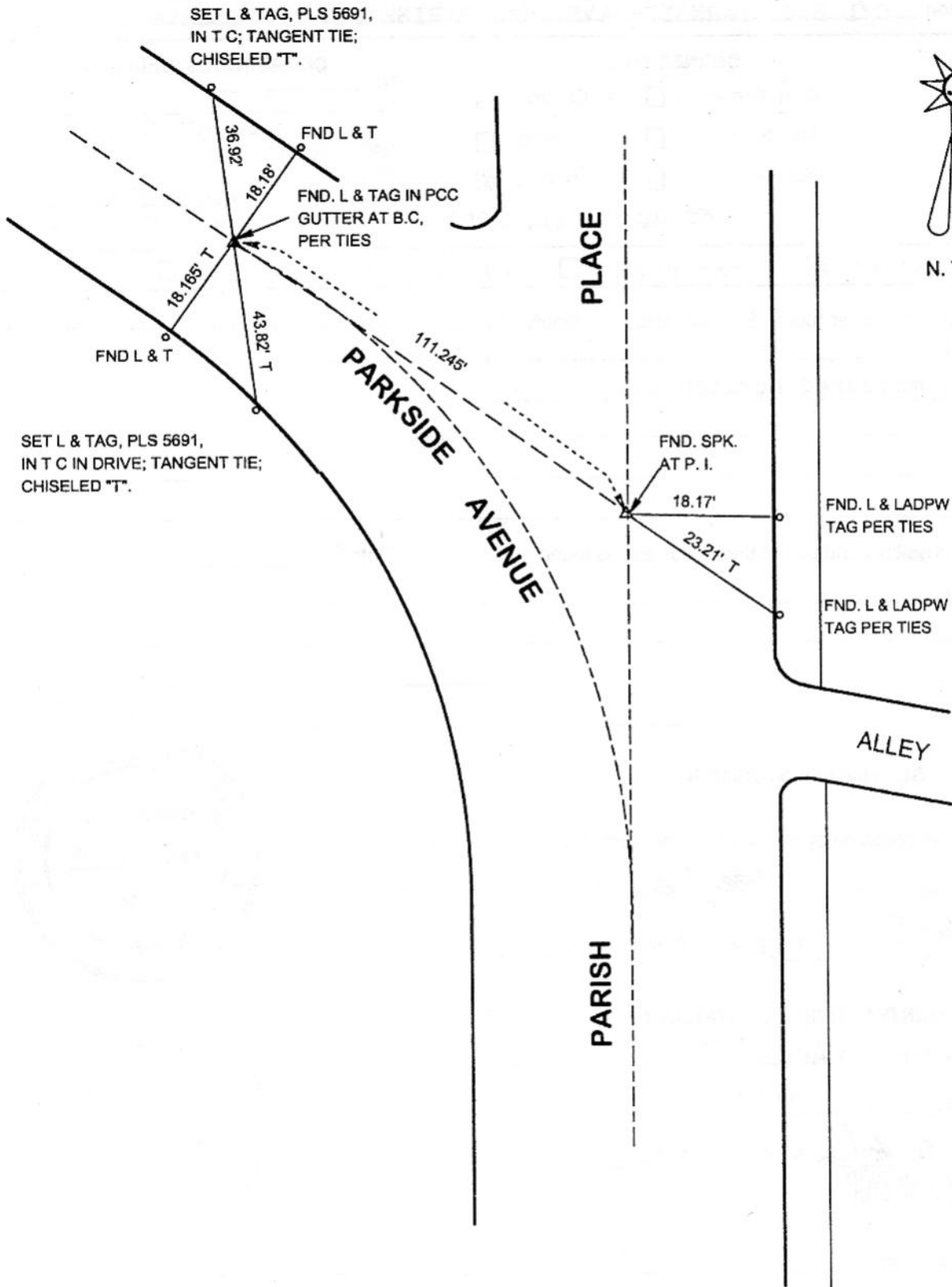


FB-335 P. 273



N. T. S.



REFERENCE: PWFB 1719-177

DATE: MARCH 11, 2003  
SURVEYED BY: J. P. OSTLY  
P. L. S. 5691

# CORNER RECORD

Document Number

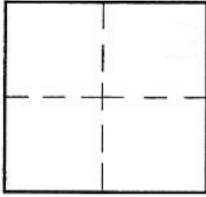
**131**

City of BURBANK

County of Los Angeles, California

Brief Legal Description C/L B.C. PARKSIDE AVE. W/O PARISH PL.

**MONUMENT  
PRESERVATION**



### CORNER TYPE

- Govt. Corner  Control
- Meander  Property
- Rancho  Other
- Date of Survey MARCH 11, 2003

### COORDINATES (Optional)

- N. \_\_\_\_\_
- E. \_\_\_\_\_
- Zone \_\_\_\_\_ NAD27  NAD83
- NAD83 Epoch \_\_\_\_\_
- Elev. \_\_\_\_\_
- Vert. Datum: NGVD29  NAVD88
- Meas. Units: Metric  Imperial

Corner - Left as found  Found & tagged  Established  Reestablished  Rebuilt

Identification and type of corner found: Evidence used to identify or procedure used to establish or reestablish the corner:  
see plat;  
distances measured horizontal;

A description of the physical condition of the monument as found and as set or reset:  
see plat;

### SURVEYOR'S STATEMENT

This Corner Record was prepared by me or under my direction in conformance with the Land Surveyors' Act on APRIL 6, 2003  
 Signed [Signature] P.L.S. or R.C.E. No. 5691



### COUNTY SURVEYOR'S STATEMENT

This Corner Record was received APR 10 2003  
 and examined and filed APR 30 2003  
 Signed Douglas W. Joslin P.L.S. or R.C.E. No. \_\_\_\_\_  
 Title: DEPUTY COUNTY SURVEYOR



County Surveyor's Comment \_\_\_\_\_

*File 4-23-03*