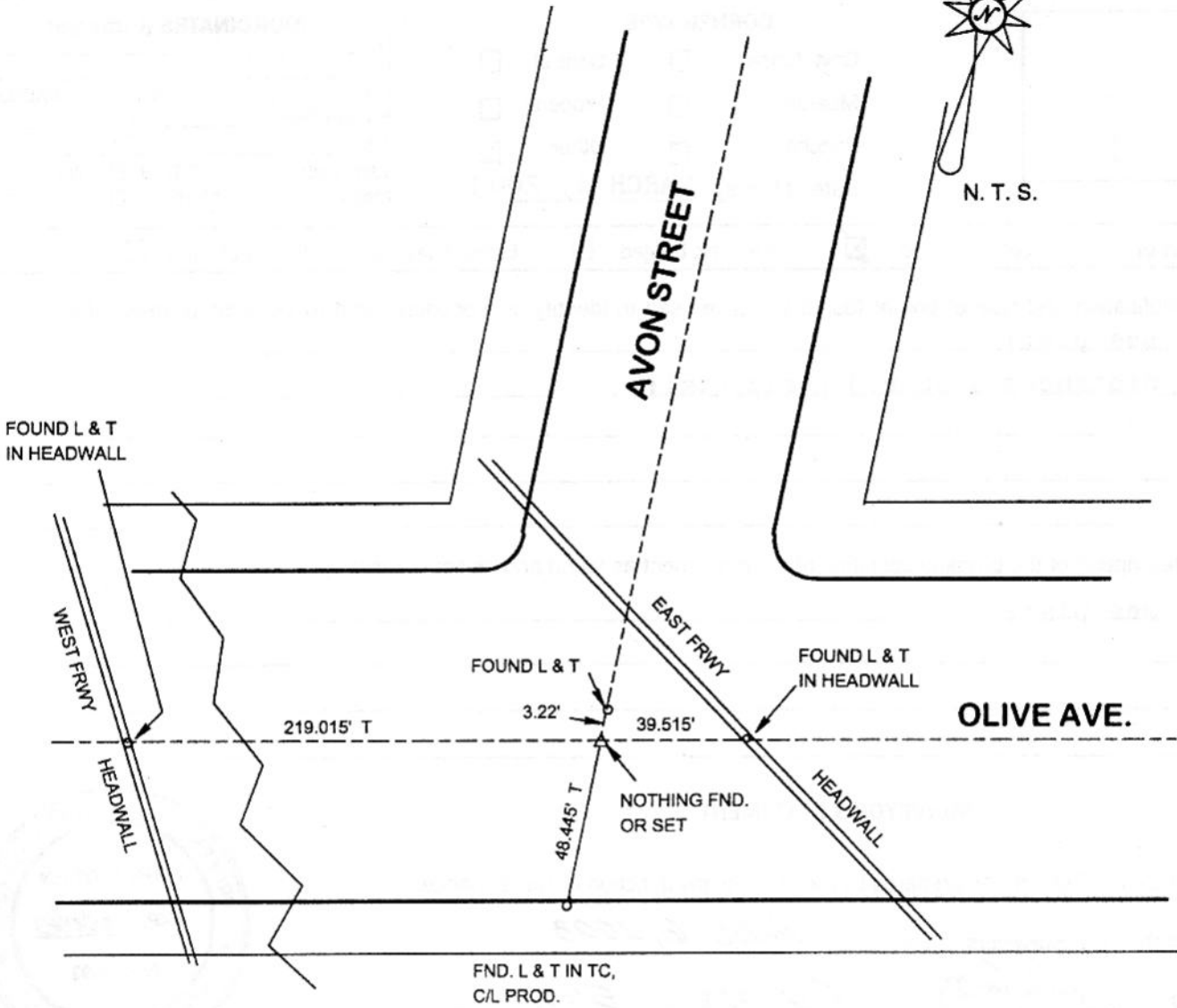


FB-335 P1241



N. T. S.



REFERENCE: CEFB

DATE: MARCH 6, 2003
SURVEYED BY: J. P. OSTLY
P. L. S. 5691

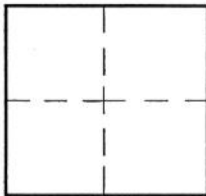
CORNER RECORD

City of BURBANK

Document Number _____

County of Los Angeles, California

Brief Legal Description OLIVE AVE & AVON ST. - MONUMENT PRESERVATION



CORNER TYPE

Govt. Corner Control
 Meander Property
 Rancho Other
 Date of Survey MARCH 6, 2003

COORDINATES (Optional)

N. _____
 E. _____
 Zone _____ NAD27 NAD83
 NAD83 Epoch _____
 Elev. _____
 Vert. Datum: NGVD29 NAVD88
 Meas. Units: Metric Imperial

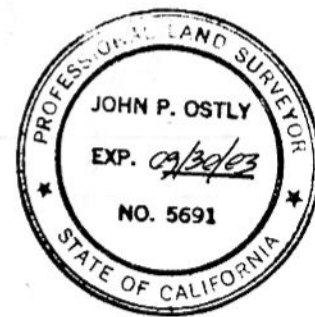
Corner - Left as found Found & tagged Established Reestablished Rebuilt

Identification and type of corner found: Evidence used to identify or procedure used to establish or reestablish the corner:
see plat;
distances measured horizontal;

A description of the physical condition of the monument as found and as set or reset:
see plat;

SURVEYOR'S STATEMENT

This Corner Record was prepared by me or under my direction in conformance with the Land Surveyors' Act on April 6, 2003
 Signed [Signature] P.L.S. or R.C.E. No. 5691



COUNTY SURVEYOR'S STATEMENT

This Corner Record was received APR 10 2003
 and examined and filed APR 29 2003
 Signed [Signature] P.L.S. or R.C.E. No. _____
 Title: DEPUTY COUNTY SURVEYOR



County Surveyor's Comment _____

JMG 4-23-03