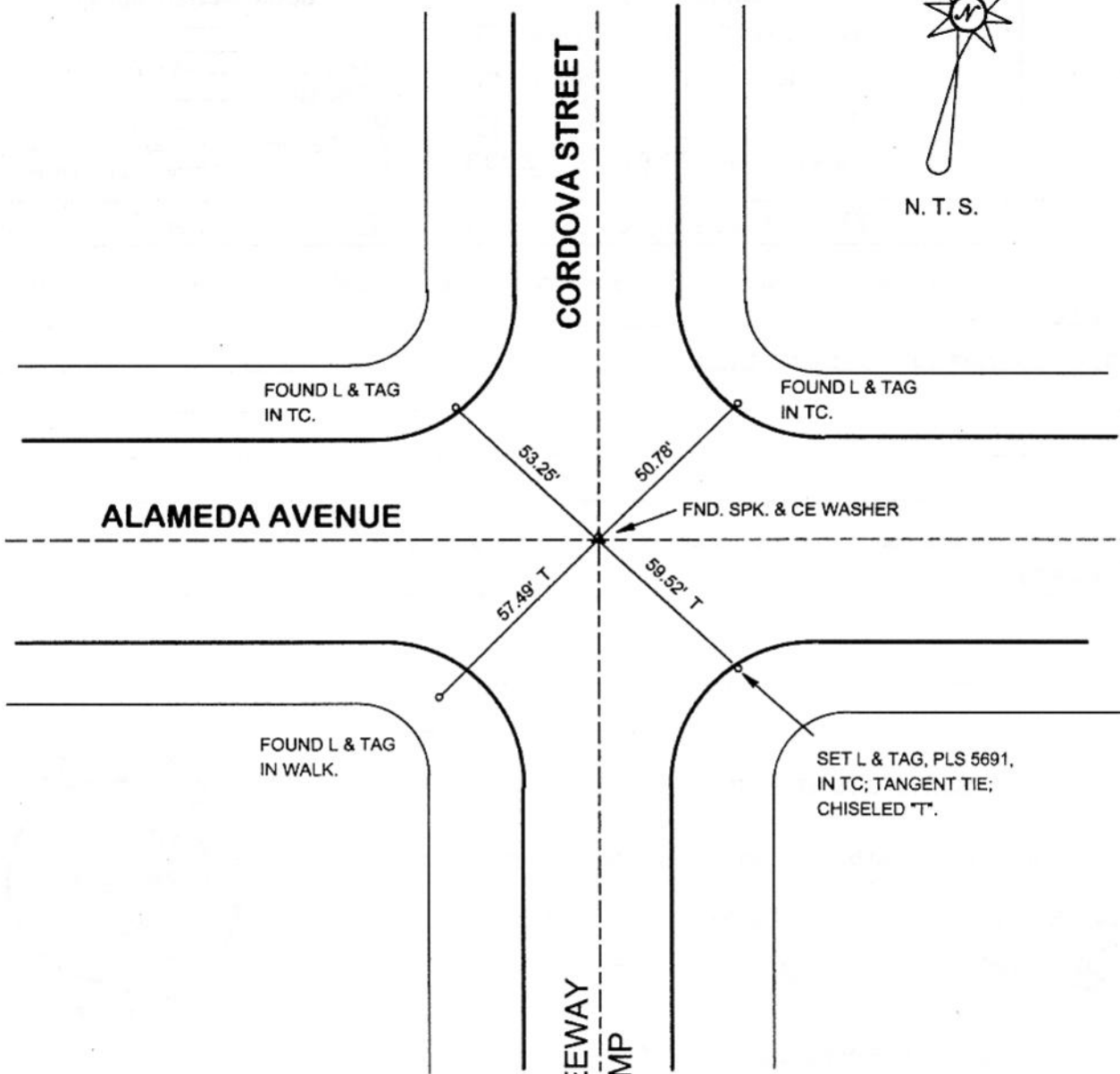


FB-335 P. 239



N. T. S.



REFERENCE: CEFB 334-23

134 FREEWAY
OFF RAMP

DATE: FEB. 24, 2003
SURVEYED BY: J. P. OSTLY
P. L. S. 5691

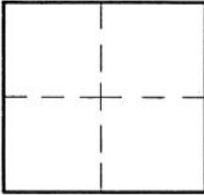
CORNER RECORD

Document Number _____

City of BURBANK

County of Los Angeles, California

Brief Legal Description ALAMEDA AVE. & CORDOVA ST. - MONUMENT PRESERVATION



CORNER TYPE

Govt. Corner Control
 Meander Property
 Rancho Other
 Date of Survey FEB. 24, 2003

COORDINATES (Optional)

N. _____
 E. _____
 Zone _____ NAD27 NAD83
 NAD83 Epoch _____
 Elev. _____
 Vert. Datum: NGVD29 NAVD88
 Meas. Units: Metric Imperial

Corner - Left as found Found & tagged Established Reestablished Rebuilt

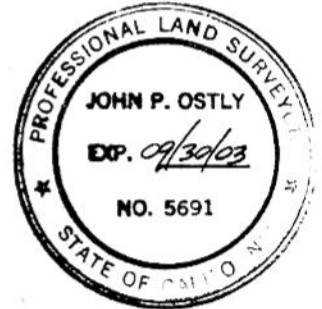
Identification and type of corner found: Evidence used to identify or procedure used to establish or reestablish the corner:
see plat;
distances measured horizontal;

A description of the physical condition of the monument as found and as set or reset:
see plat;

SURVEYOR'S STATEMENT

This Corner Record was prepared by me or under my direction in conformance with the Land Surveyors' Act on April 4, 2003

Signed [Signature] P.L.S. or R.C.E. No. 5691



COUNTY SURVEYOR'S STATEMENT

This Corner Record was received APR 10 2003

and examined and filed APR 29 2003

Signed [Signature] P.L.S. or R.C.E. No. _____

Title: DEPUTY COUNTY SURVEYOR



County Surveyor's Comment _____

SMG 4-23-03