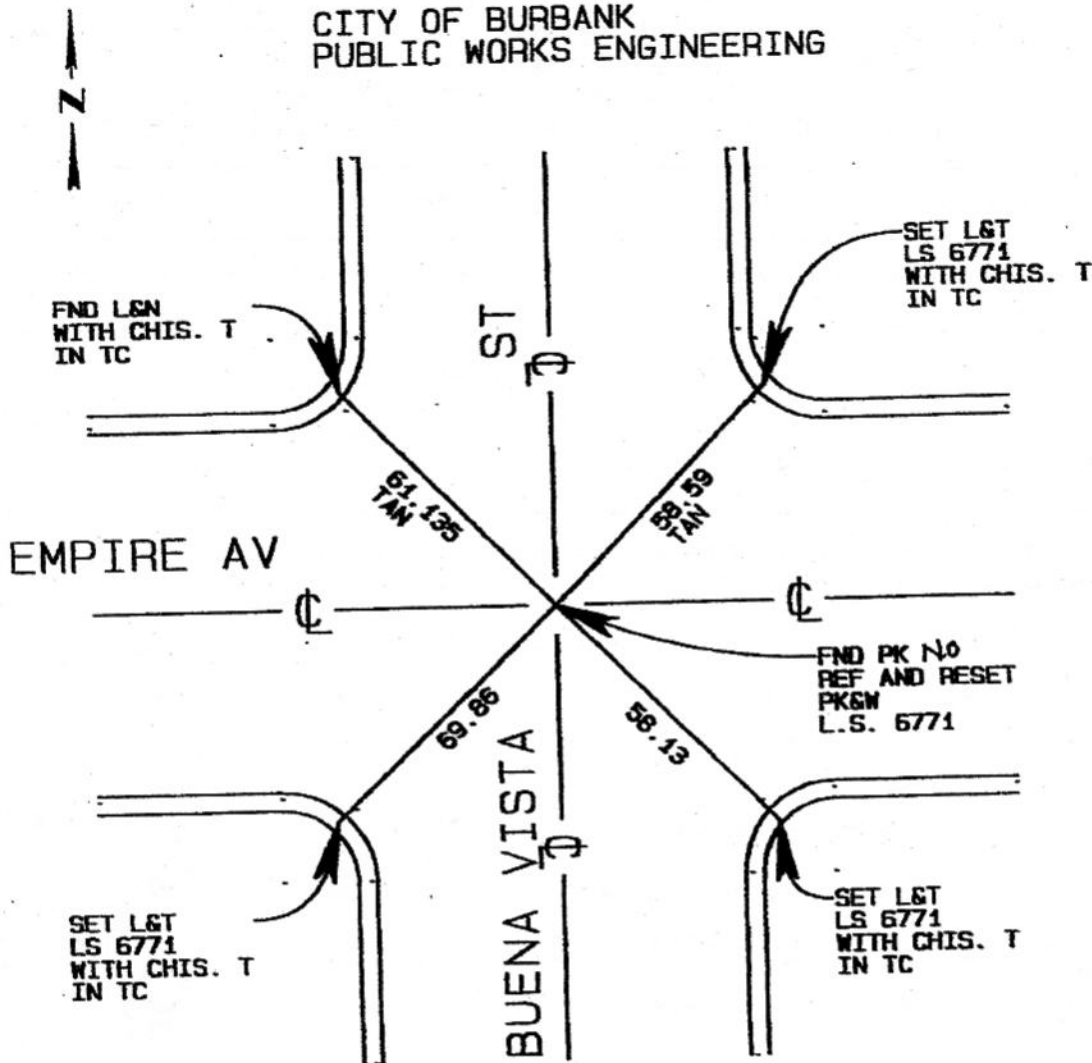


FB-335 P. 187

CITY OF BURBANK  
PUBLIC WORKS ENGINEERING



SURVEYED BY C.E.S.M.  
SURVEY DATE 08-20-01  
RESET DATE 04-05-02

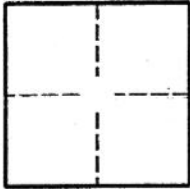


CORNER RECORD

Document Number 368

City of Burbank County of Los Angeles, California

Brief Legal Description 4 Mon. Empire Av + Buena Vista St



CORNER TYPE

Government Corner  Control   
Meander  Property   
Rancho  Other   
Date of Survey 04-05-02

COORDINATES (OPTIONAL)

N. \_\_\_\_\_  
E. \_\_\_\_\_  
Zone NAD27  NAD83   
NAD83 Epoch \_\_\_\_\_  
Elev. \_\_\_\_\_  
Vert. Datum: NGVD29  NAVD88   
Meas. Units: Metric  Imperial

Corner- Left as found  Found and tagged  Established  Reestablished  Rebuilt

Identification and type of corner found: Evidence used to identify or procedure used to establish or reestablish the corner:

END PK NO REF

A description of the physical condition of the monument as found and as set or reset:

SET PK+W LS6771

SURVEYOR'S STATEMENT

This Corner Record was prepared by me or under my direction in conformance with the Land Surveyors' Act of 10-16-02

Signed Greg Embrey P.L.S. or R.C.E. Number LS6771



COUNTY SURVEYOR'S STATEMENT

This Corner Record was received OCT 29 2003

and examined and filed NOV 05 2003

Signed Douglas W. Joslin P.L.S. or R.C.E. Number \_\_\_\_\_

Title DEPUTY COUNTY SURVEYOR



County Surveyor's Comment NOV 05 2003 TH