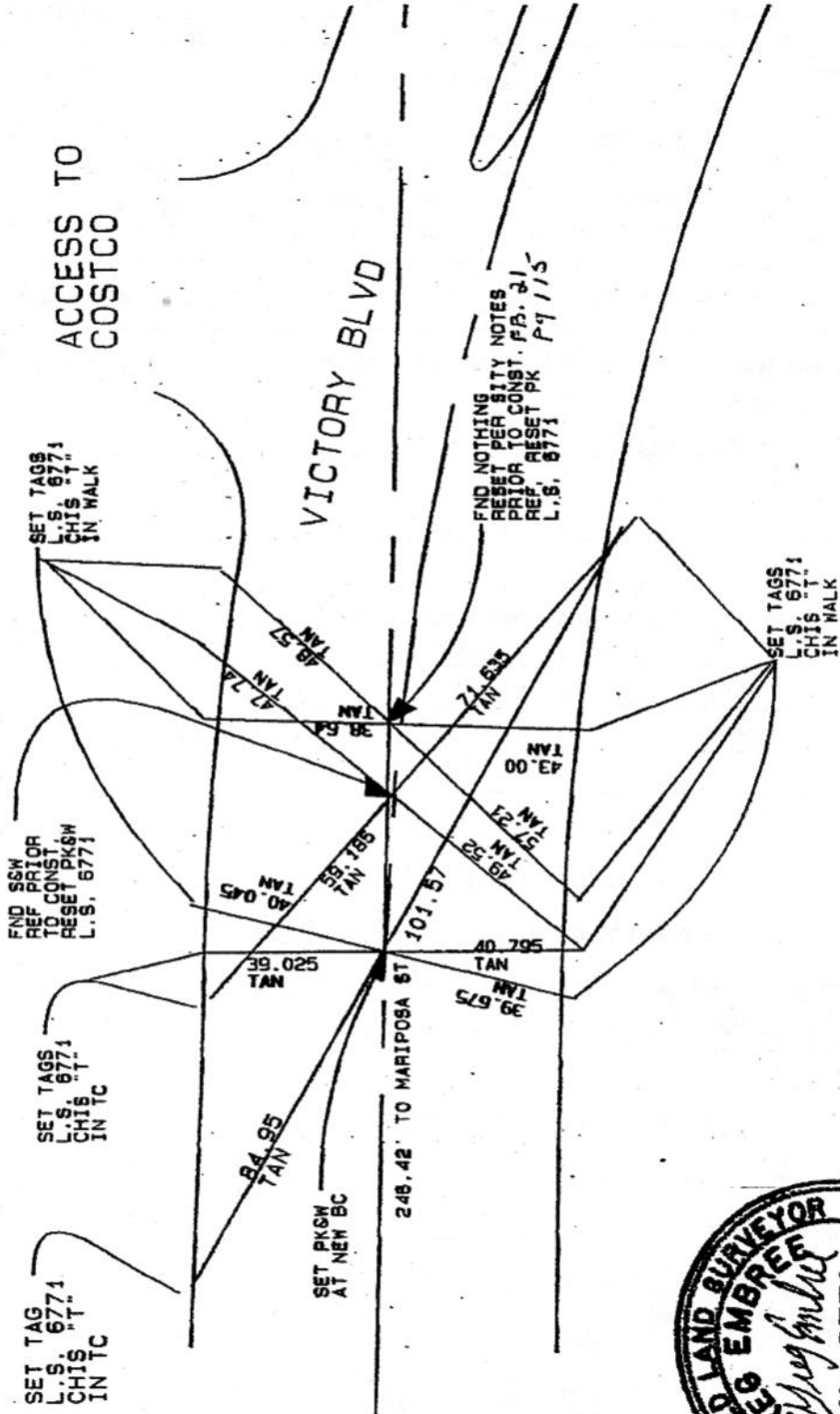


FB-335 P. 191

CITY OF BURBANK
PUBLIC WORKS ENGINEERING



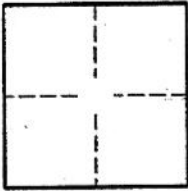
PWFB 1718

CORNER RECORD

Document Number 393

City of Burbank County of Los Angeles, California

Brief Legal Description Monuments Victory Blvd.



CORNER TYPE

Government Corner Control
Meander Property
Rancho Other
Date of Survey 04-05-02

COORDINATES (OPTIONAL)

N. _____
E. _____
Zone _____ NAD27 NAD83
NAD83 Epoch _____
Elev. _____
Vert. Datum: NGVD29 NAVD88
Meas. Units: Metric Imperial

Corner- Left as found Found and tagged Established Reestablished Rebuilt

Identification and type of corner found; Evidence used to identify or procedure used to establish or reestablish the corner:

FND MONUMENT SPIKE
FND NOTHING

A description of the physical condition of the monument as found and as set or reset:

FND 1 SPIKE RESET PK+W LS6771
SET 1 PK+W @ NEW BC
SET 1 PK+W Per FB 21 P6115- & #9458 MB129-87

SURVEYOR'S STATEMENT

This Corner Record was prepared by me or under my direction in conformance with

the Land Surveyors' Act on 10-16-02

Signed Meg Emley (P.L.S.) or R.C.E. Number 6771



COUNTY SURVEYOR'S STATEMENT

This Corner Record was received OCT 29 2003

and examined and filed NOV 05 2003

Signed Douglas W. Joslin P.L.S. or R.C.E. Number _____

Title DEPUTY COUNTY SURVEYOR

County Surveyor's Comment NOV 05 2003 TH

