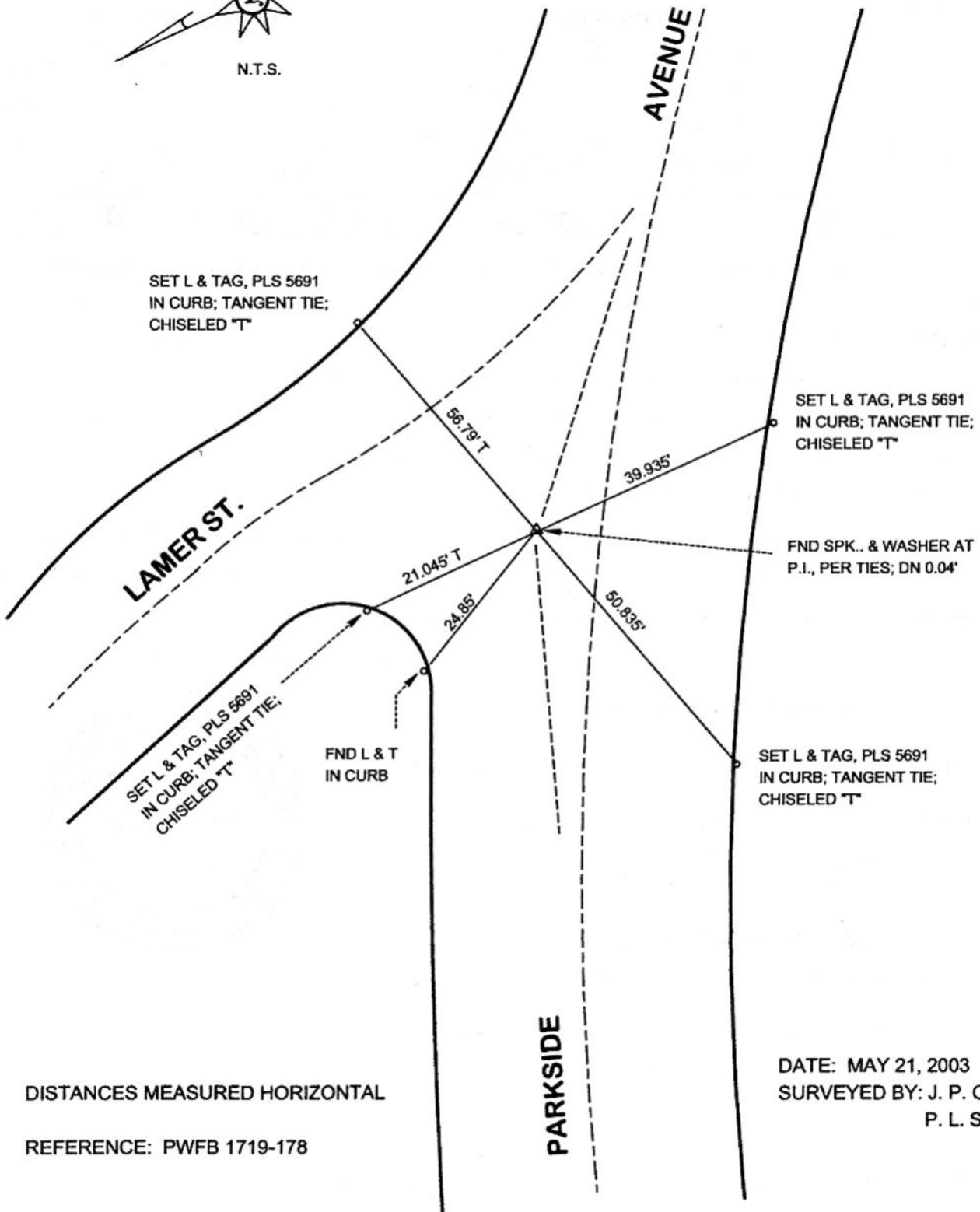
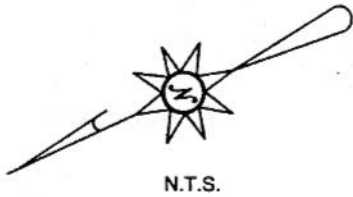


FB-335 P.139



DISTANCES MEASURED HORIZONTAL

REFERENCE: PWFB 1719-178

DATE: MAY 21, 2003  
 SURVEYED BY: J. P. OSTLY  
 P. L. S. 5691

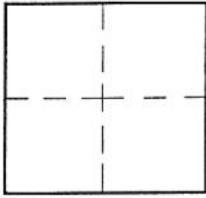
# CORNER RECORD

Document Number \_\_\_\_\_

City of BURBANK

County of Los Angeles, California

Brief Legal Description P.I. PARKSIDE AVE. W/O LAMER ST.- MONUMENT PRESERVATION



### CORNER TYPE

Govt. Corner  Control   
 Meander  Property   
 Rancho  Other   
 Date of Survey May 21, 2003

### COORDINATES (Optional)

N. \_\_\_\_\_  
 E. \_\_\_\_\_  
 Zone \_\_\_\_\_ NAD27  NAD83   
 NAD83 Epoch \_\_\_\_\_  
 Elev. \_\_\_\_\_  
 Vert. Datum: NGVD29  NAVD88   
 Meas. Units: Metric  Imperial

Corner - Left as found  Found & tagged  Established  Reestablished  Rebuilt

Identification and type of corner found: Evidence used to identify or procedure used to establish or reestablish the corner:  
see plat;

distances measured horizontal;  
 \_\_\_\_\_  
 \_\_\_\_\_

A description of the physical condition of the monument as found and as set or reset:  
see plat;  
 \_\_\_\_\_  
 \_\_\_\_\_

### SURVEYOR'S STATEMENT

This Corner Record was prepared by me or under my direction in conformance with the Land Surveyors' Act on June 1, 2003

Signed *John P. Ostly* P.L.S. or R.C.E. No. 5691



### COUNTY SURVEYOR'S STATEMENT

This Corner Record was received \_\_\_\_\_ and examined and filed \_\_\_\_\_

Signed \_\_\_\_\_ P.L.S. or R.C.E. No. \_\_\_\_\_

Title: \_\_\_\_\_

County Surveyor's Comment \_\_\_\_\_  
 \_\_\_\_\_  
 \_\_\_\_\_