

#B-335 P. 119

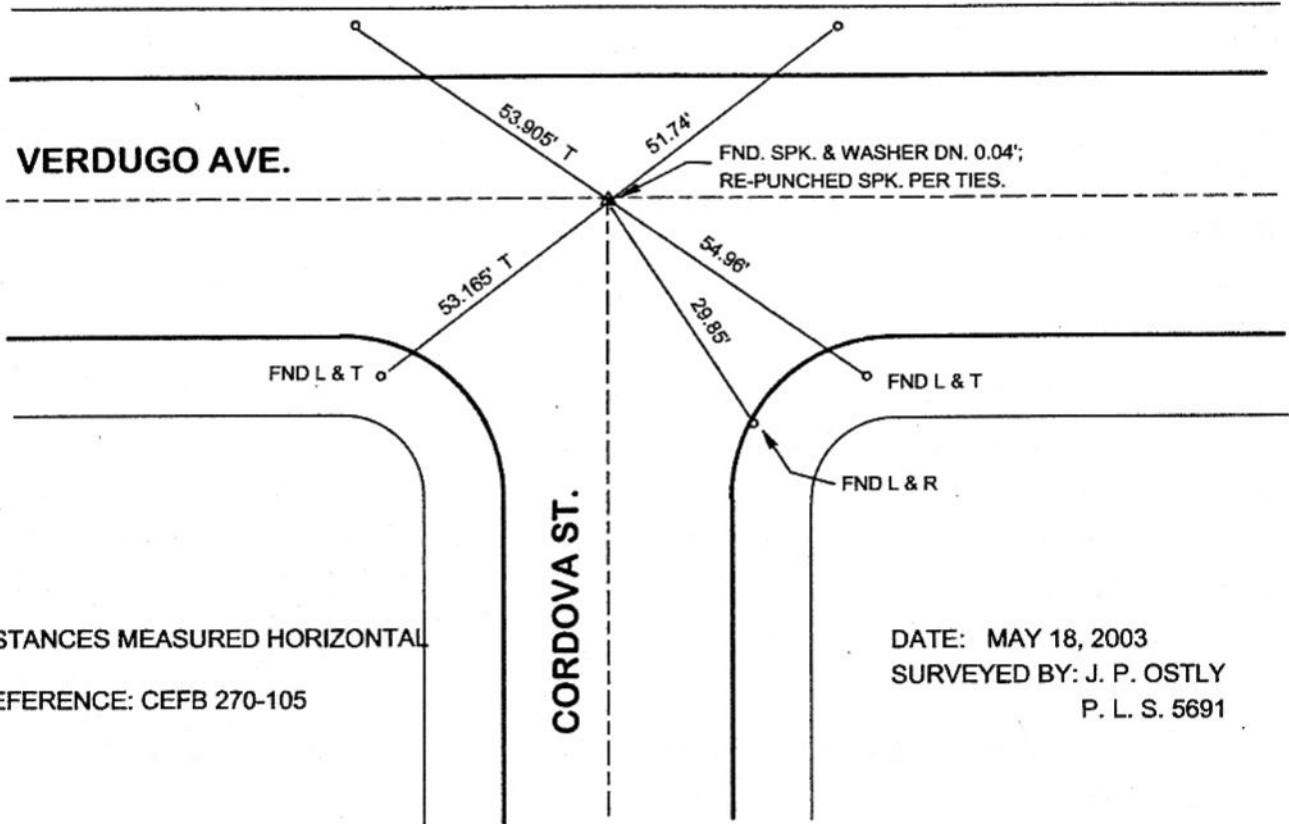


N. T. S.

SET L & TAG, PLS 5691,
IN WALK; TANGENT TIE;
CHISELED 'T'.

SET L & TAG, PLS 5691,
IN WALK; TANGENT TIE;
CHISELED 'T'.

VERDUGO AVE.



DISTANCES MEASURED HORIZONTAL
REFERENCE: CEFB 270-105

CORDOVA ST.

DATE: MAY 18, 2003
SURVEYED BY: J. P. OSTLY
P. L. S. 5691

CORNER RECORD

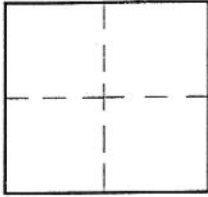
BURBANK

Document Number _____

City of _____

County of Los Angeles, California

Brief Legal Description **VERDUGO AVE. & CORDOVA ST. - C/L - MONUMENT PRESERVATION**



CORNER TYPE

Govt. Corner Control
 Meander Property
 Rancho Other
 Date of Survey May 18, 2003

COORDINATES (Optional)

N. _____
 E. _____
 Zone _____ NAD27 NAD83
 NAD83 Epoch _____
 Elev. _____
 Vert. Datum: NGVD29 NAVD88
 Meas. Units: Metric Imperial

Corner - Left as found Found & tagged Established Reestablished Rebuilt

Identification and type of corner found: Evidence used to identify or procedure used to establish or reestablish the corner:

see plat;

distances measured horizontal;

A description of the physical condition of the monument as found and as set or reset: _____

see plat;

SURVEYOR'S STATEMENT

This Corner Record was prepared by me or under my direction in conformance

with the Land Surveyors' Act on May 30, 2003

Signed *John P. Ostly* (P.L.S.) or R.C.E. No. 5691



COUNTY SURVEYOR'S STATEMENT

This Corner Record was received _____

and examined and filed _____

Signed _____ P.L.S. or R.C.E. No. _____

Title: _____

County Surveyor's Comment _____