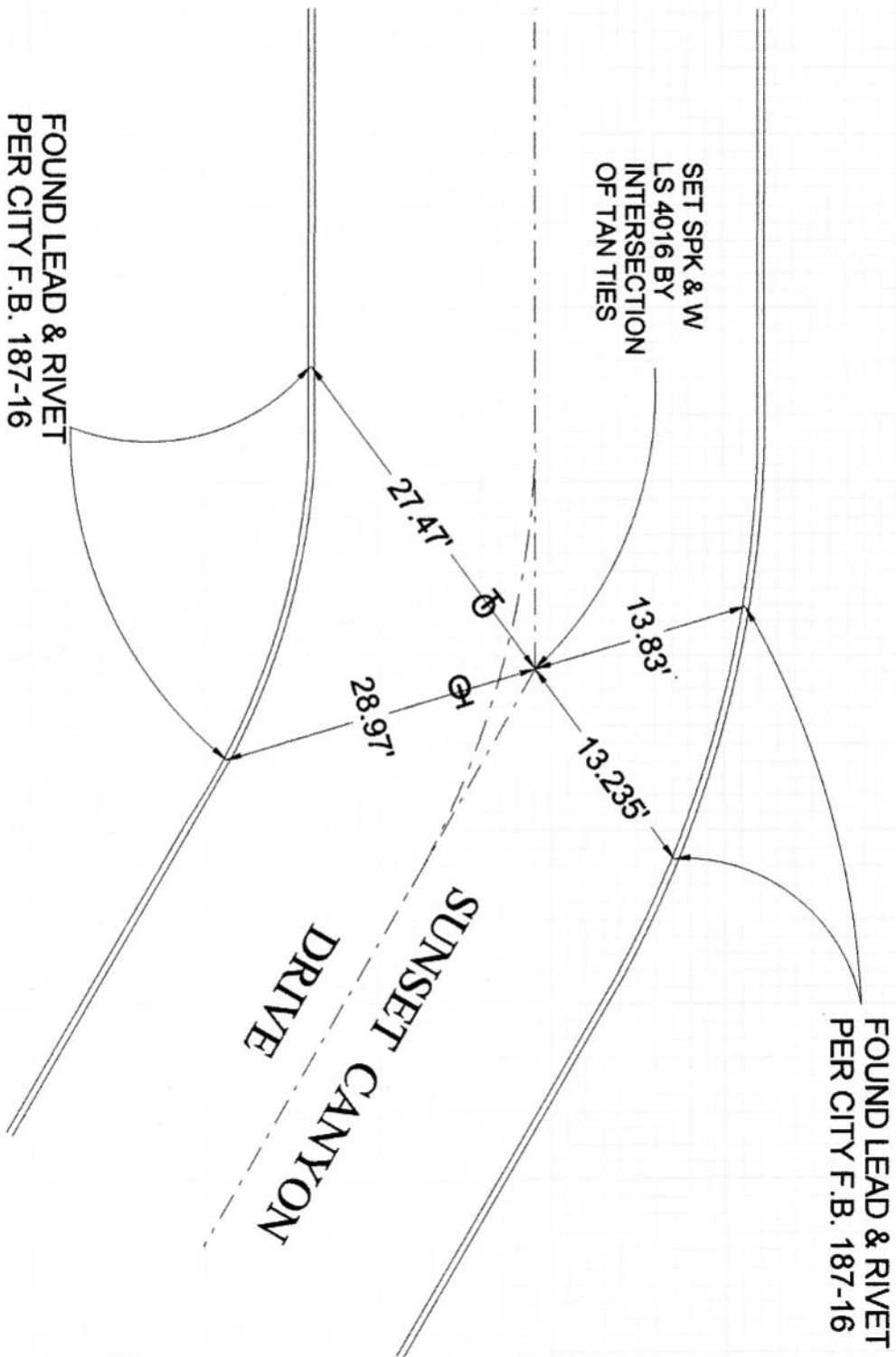
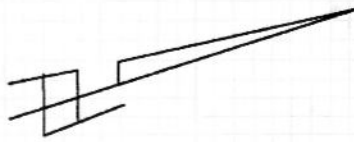


FB-334 P. 249



FB-334 P.250

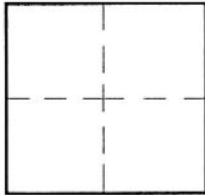
CORNER RECORD

Document Number _____

City of BURBANK

County of Los Angeles, California

Brief Legal Description SUNSET CANYON DRIVE P.I. N'W / O WALNUT AVENUE



CORNER TYPE

Govt. Corner Control
 Meander Property
 Rancho Other
 Date of Survey 1-7-03

COORDINATES (Optional)

N. _____
 E. _____
 Zone _____ NAD27 NAD83
 NAD83 Epoch _____
 Elev. _____
 Vert. Datum: NGVD29 NAVD88
 Meas. Units: Metric Imperial

Corner - Left as found Found & tagged Established Reestablished Rebuilt

Identification and type of corner found: Evidence used to identify or procedure used to establish or reestablish the corner:

SEE PLAT

A description of the physical condition of the monument as found and as set or reset: _____

SEE PLAT

SURVEYOR'S STATEMENT

This Corner Record was prepared by me or under my direction in conformance with the Land Surveyors' Act on JANUARY 27, 2003.

Signed David L. Lindell P.L.S. or R.C.E. No. LS 4016



COUNTY SURVEYOR'S STATEMENT

This Corner Record was received _____

and examined and filed _____

Signed _____ P.L.S. or R.C.E. No. _____

Title: _____

County Surveyor's Comment _____