

FB - 334 P. 182

CORNER RECORD

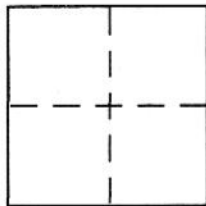
BURBANK

Document Number _____

City of _____

County of Los Angeles, California

Brief Legal Description CENTERLINE TIES: PACIFIC AVENUE & EVERGREEN STREET



CORNER TYPE

Government Corner Control
Meander Property
Rancho Other
Date of Survey 4-11-00

COORDINATES (Optional)

N. _____
E. _____
Zone _____ NAD27 NAD83
NAD83 Epoch _____
Elev. _____
Vert. Datum: NGVD29 NAVD88
Meas. Units: Metric Imperial

Corner - Left as found Found and tagged Established Reestablished Rebuilt

Identification and type of corner found: Evidence used to identify or procedure used to establish or reestablish the corner:

ESTABLISHED BY 2 REMAINING GOOD TIES

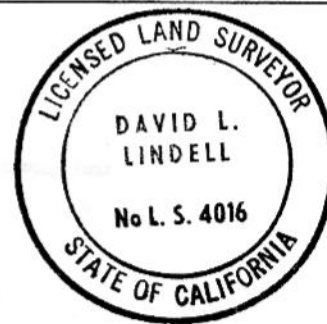
A description of the physical condition of the monument as found and as set or reset: _____

SEE PLAT

SURVEYOR'S STATEMENT

This Corner Record was prepared by me or under my direction in conformance with
MAY 31, 2000
the Land Surveyor's Act on _____

Signed David L. Lindell P.L.S or R.C.E. No. LS 4016
(EXPIRES 6-30-04)



COUNTY SURVEYOR'S STATEMENT

This Corner Record was received _____

and examined and filed _____

Signed _____ P.L.S or R.C.E. No. _____

Title _____

County Surveyor's Comment _____