

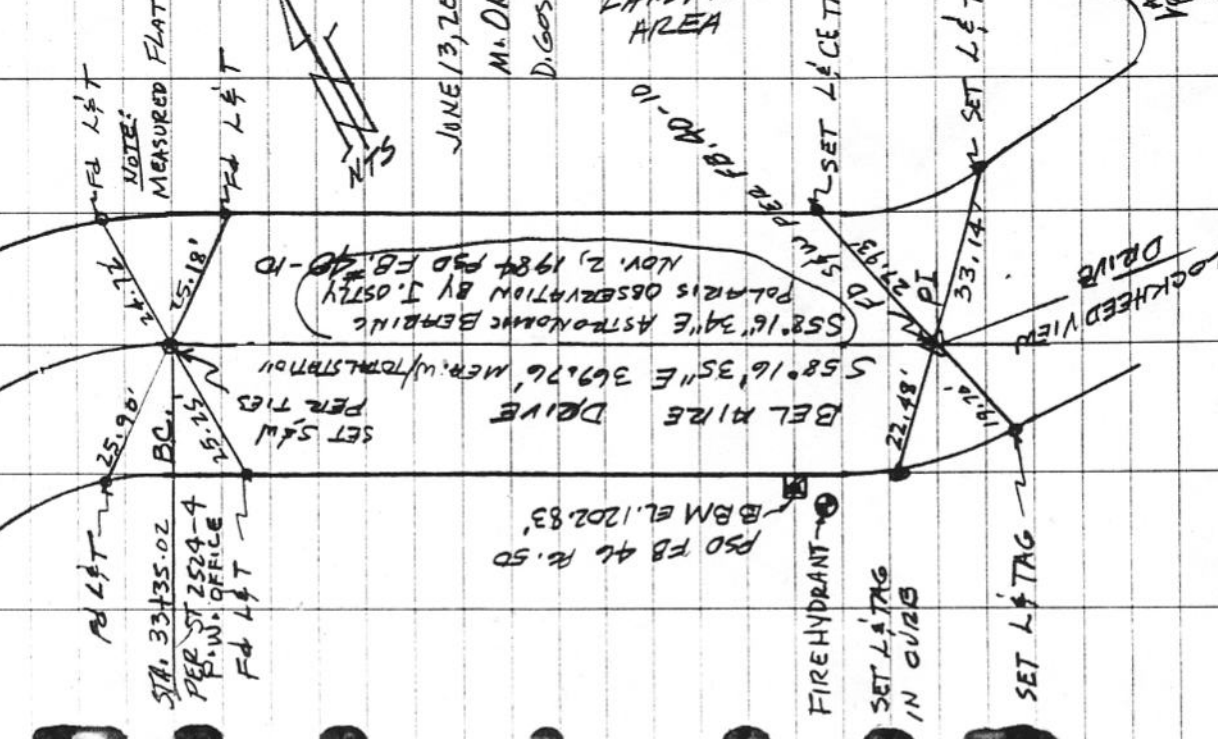
FB-334

SAL'S PT. #75
2" IP WPK



#75
SAL'S PT. #56
CONTROL SURVEY SAL'S PT. #75 & #56
ARE FROM MAPPING PROJECT 1988
PREPARED BY: ITECH, INC.

P.149



BELAIRE DRIVES
LOCKHEED VIEW DRIVE

NOTE:
MEASURED FLAT

STA. 33+35.02
PER ST 2524-4
P.W. OFFICE

BELAIRE DRIVE
LOCKHEED VIEW DRIVE

LANDFILL #3
AREA

LOCKHEED VIEW DRIVE

5

4

JUNE 13, 2000
M. ORTEGA
D. GOSKE

SS 81.6' 34" E ASTRONOMIC BEARING
POLARIS OBSERVATION BY J. OSTLY
NOV. 2, 1984 PSD FB #40-10

PSD FB #4 R. 50
B.M. EL. 1202.83

FIRE HYDRANT
SET L & TAG
IN CURB

SET L & TAG

LOCKHEED VIEW DRIVE