

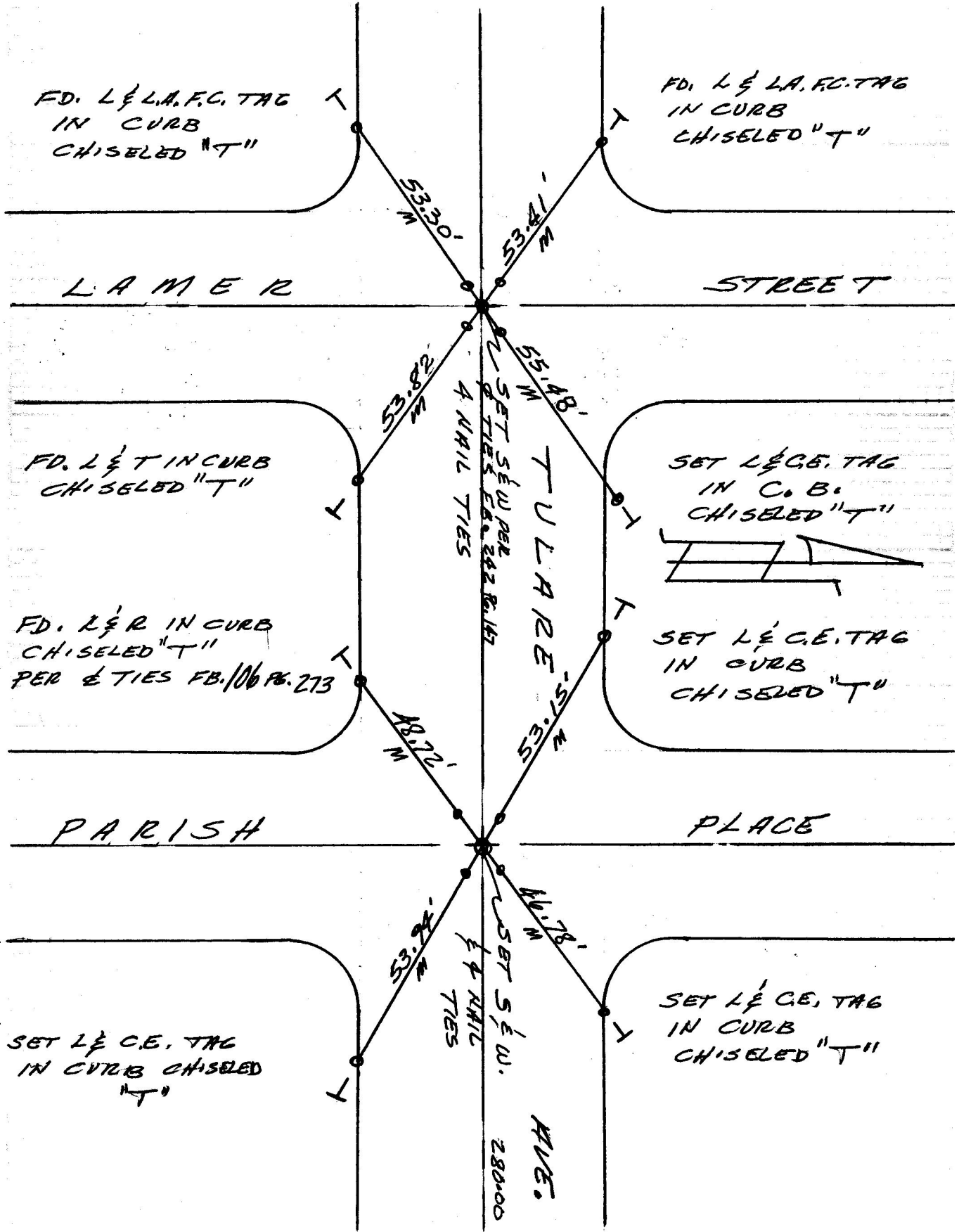
**City of Burbank  
Public Works Engineering**

Type of Survey: TRANSIT TIES F.B.: 331 Pg.: 143

Surveyed by: HENSLEE, ORTEGA, STEAD, VILLARAMA Date: AUG. 5, 1991

Tract or Parcel Map No.: LAMER ST. & PARISH PL. Work Order No.: \_\_\_\_\_

**NOTE:**  
Additions or changes  
must be initiated or  
dated.



Return Originals To:  
City of Burbank  
Public Works Engineering  
Survey Division  
275 E. Olive Ave., Burbank, CA 91502 -1267