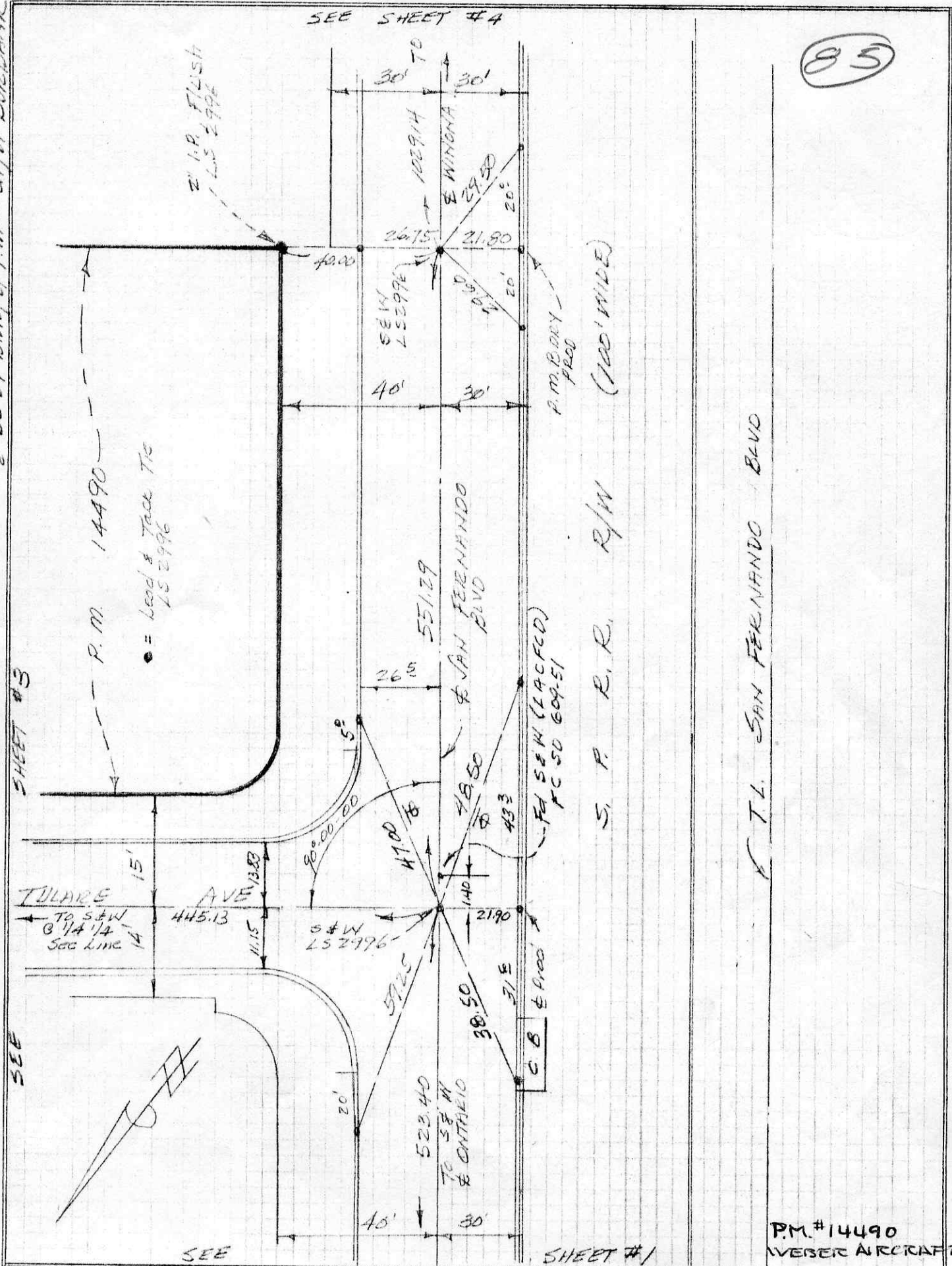


DATE: 5-7-82

SURVEY FIELD NOTES

SURVEY OF: P.M. 14490
CORNER: TULARE & SAN FERNANDO BLVD
& SE'LY B'DY of P.M. - City of BURBANK

MOLLENHAUER, HIGASHI & MOORE, INC.
LAND SURVEYORS AND CIVIL ENGINEERS
453 SOUTH SPRING STREET, LOS ANGELES, CALIFORNIA 90013
PHONE: (213) 624-2661



P.M. #14490
WEBER AIRCRAFT