

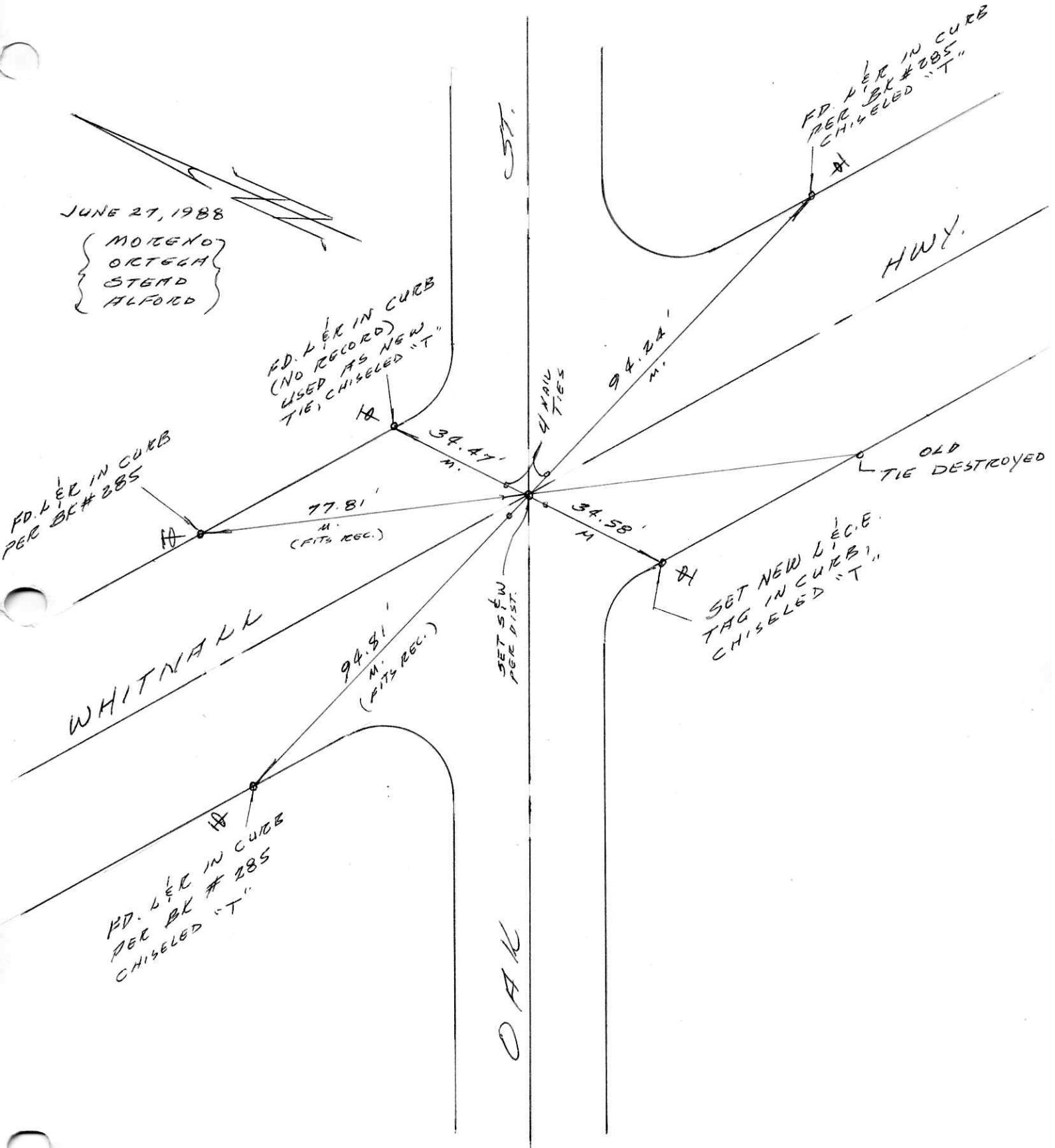
322

OAK STREET
& TIES

351

JUNE 27, 1988

{ MORENO
ORTEGA
STEAD
ALFORD }



FD. L. ER IN CURB
(NO RECORD)
USED AS NEW
TIE, CHISELED "T"

FD. L. ER IN CURB
PER BK #285

FD. L. ER IN CURB
PER BK #285
CHISELED "T"

SET NEW L. E.C.E.
TAG IN CURB,
CHISELED "T"

OLD
TIE DESTROYED

SET S.W.
PER DIST.

4 NAIL
TIES

WHITNALL

HWY.

OAK

FD. L. ER IN CURB
PER BK #285
CHISELED "T"

77.81'
M.
(FITS REC.)

94.81'
M.
(FITS REC.)

34.47'
M.

34.58'
M.

94.24'
M.