

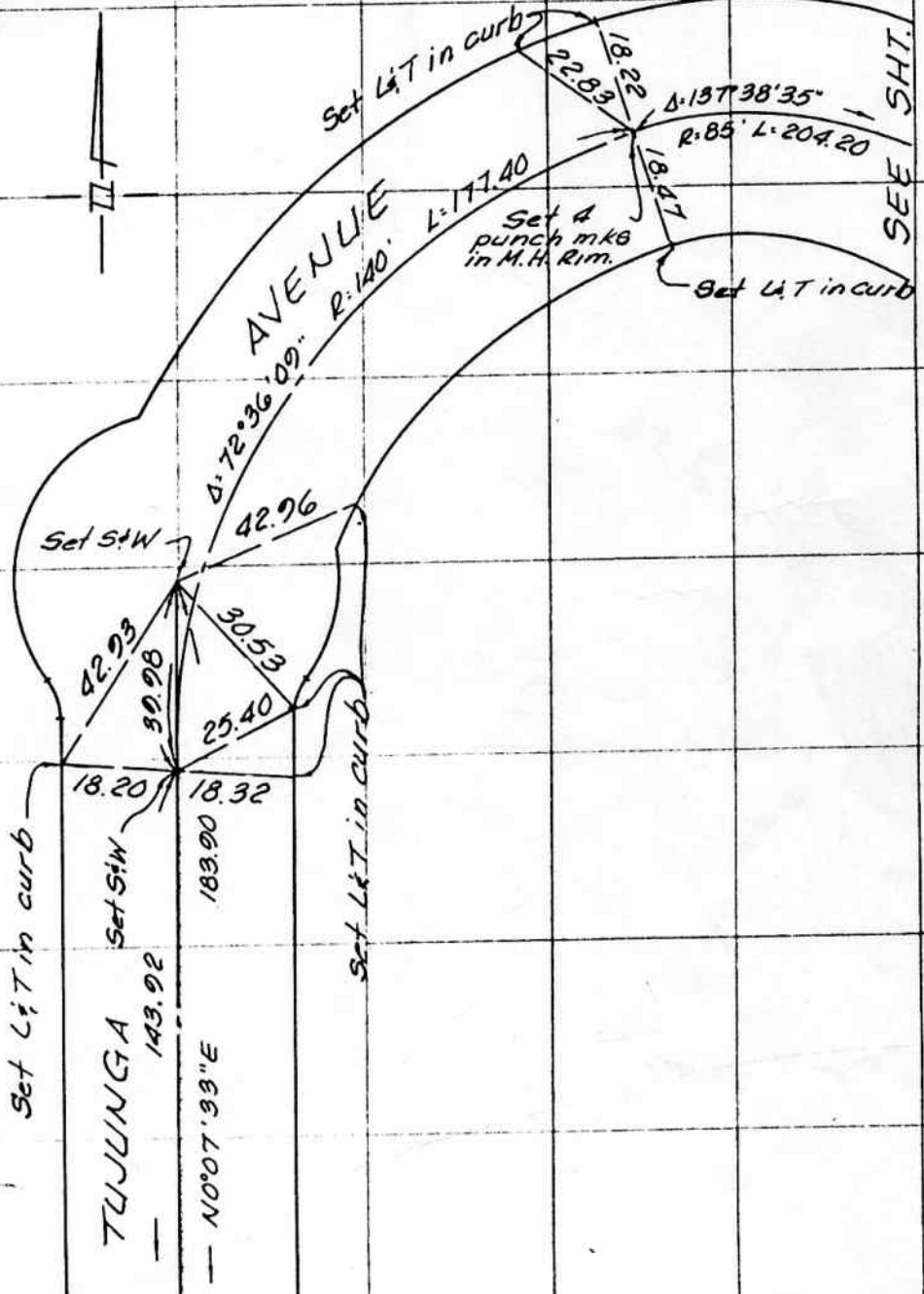
SURVEY OF ETIES

SURVEY BY WESLEY R. LIND R.C.E. 16362

TR. No. 28292

DATE MAY 30, 1984

SO. CALIF. BLUE PRINT CO.



322

189

PAGE 2 OF 14

SURVEY OF Q TIES

SURVEY BY WESLEY R. LIND R.C.E. 16362

TR. No. 28292

DATE MAY 30, 1984

SO. CALIF. BLUE PRINT CO.-

SEE SHIT. 1

SEE SHIT. 1

$\Delta: 137^{\circ} 38' 35''$ R. 85' L. 204.20

TUJUNGA

18.70
18.29
23.54

Set SW

Set L&T in curb

Set L&T in curb

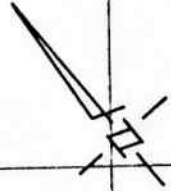
$\Delta: 169^{\circ} 13' 59''$

AVENUE R. 100'

L. 295.37

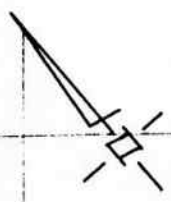
SEE SHIT. 3

SEE SHIT. 3



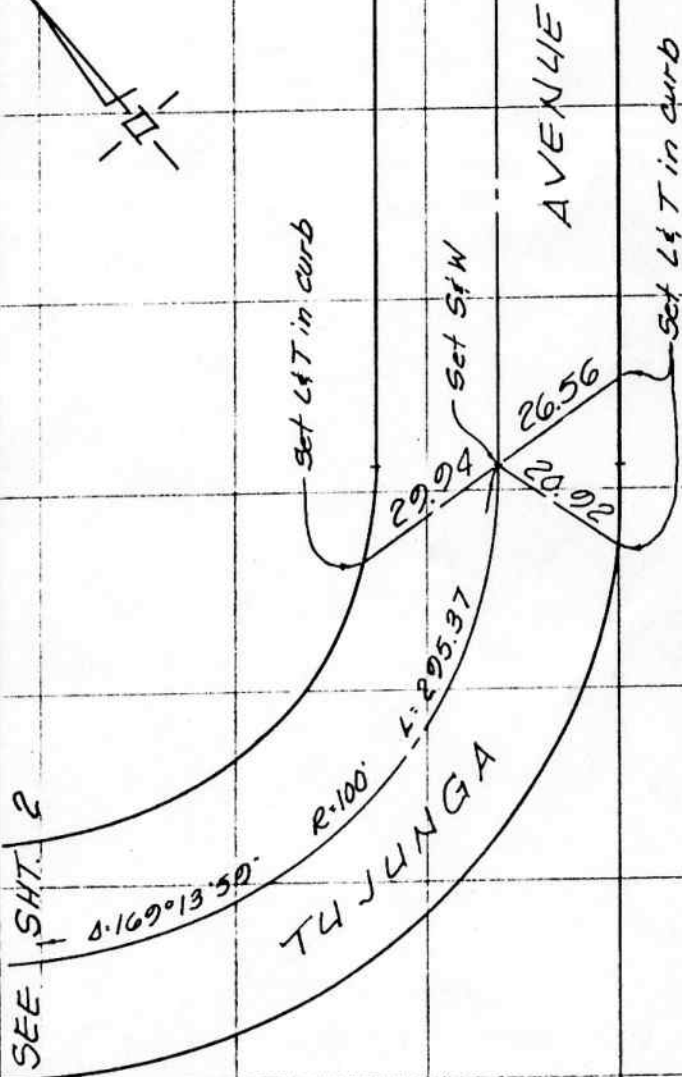
SURVEY OF € TIES PAGE 3 OF 14
 SURVEY BY WESLEY R. LIND RCE. 16362 TR. No. 28292
 DATE MAY 30, 1984

SEE SHT. 4



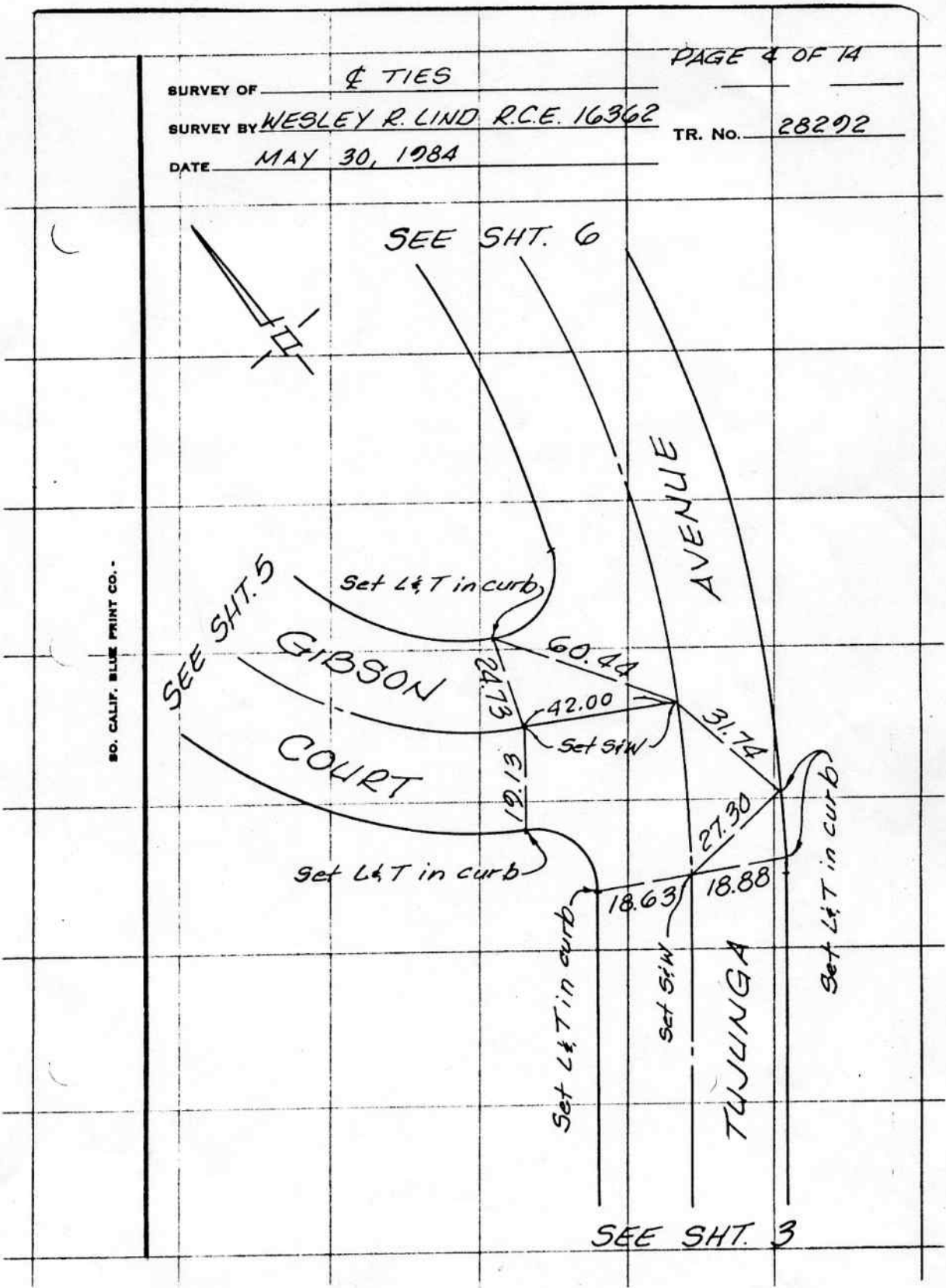
SO. CALIF. BLUE PRINT CO. -

SEE SHT. 2



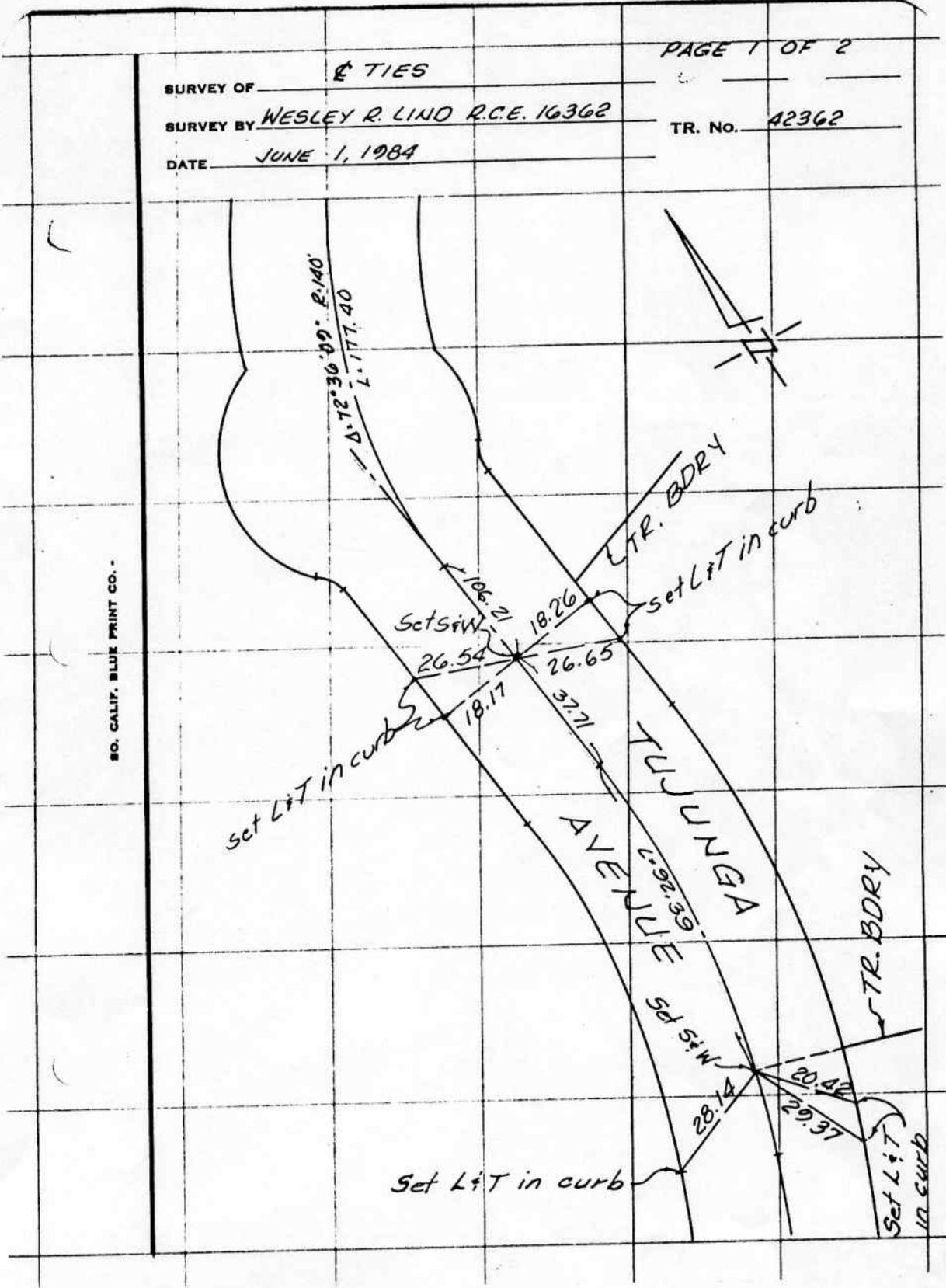
SURVEY OF 4 TIES PAGE 4 OF 14
 SURVEY BY WESLEY R. LIND R.C.E. 16362 TR. No. 28292
 DATE MAY 30, 1984

SO. CALIF. BLUE PRINT CO.



322

SUNY WORK SHEET 195



SO. CALIF. BLUE PRINT CO.

SURVEY OF ETIES PAGE 1 OF 2
 SURVEY BY WESLEY R. LIND R.C.E. 16362 TR. No. 42362
 DATE JUNE 1, 1984

322

197

PAGE 2 OF 2

SURVEY OF 4 TIES

SURVEY BY WESLEY R. LIND R.C.E. 16362

TR. No. 42362

DATE JUNE 1, 1984

SO. CALIF. BLUE PRINT CO. -

GIBSON COURT

{ Fed. S & W per Tr. No. 40026,
M. B. 992-74-76.

set Lt T in curb.

set SW

TUJUNGA

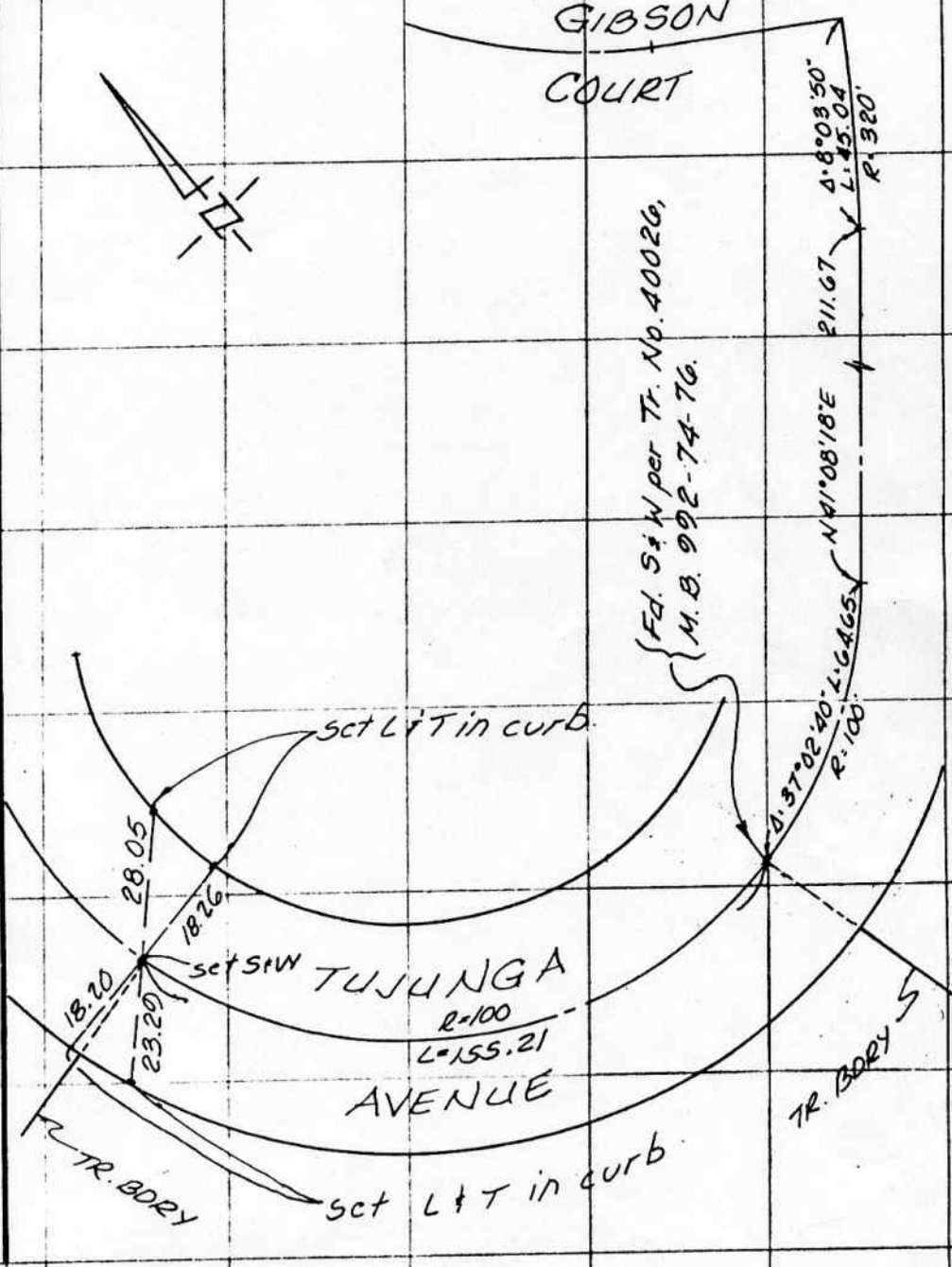
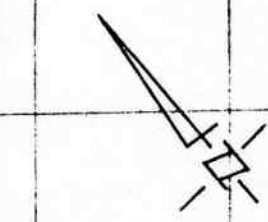
R=100

L=155.21

AVENUE

set Lt T in curb.

TR. BORY S



18.20

23.20

28.05

1826

0.3702

20°

L=64.65

R=100

N 41° 08' 18" E

211.67

S 81° 02' 40" W

116.65

R=320

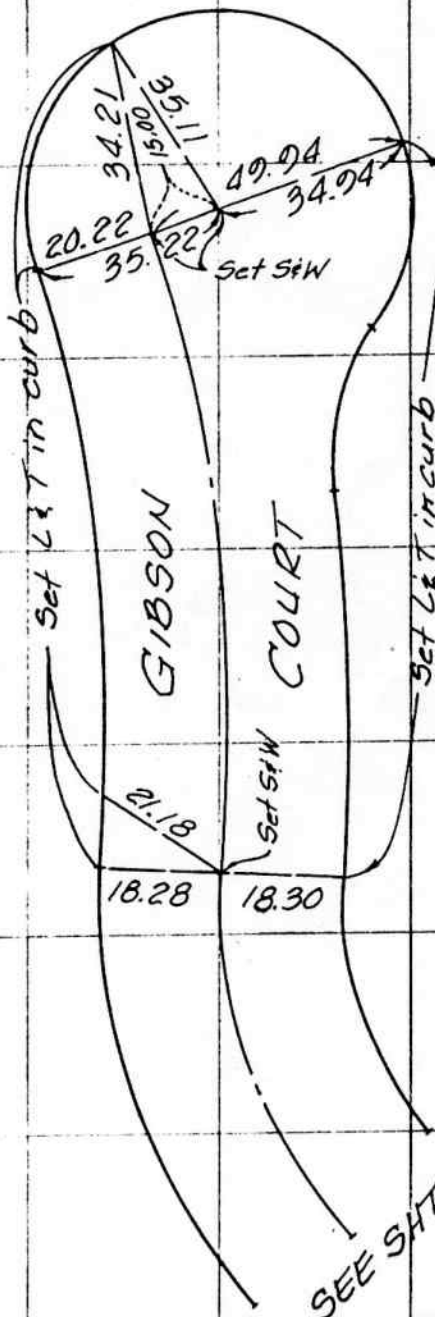
SURVEY OF 4 TIES

SURVEY BY WESLEY R. LIND R.C.E. 16362

TR. No. 28292

DATE MAY 30, 1984

SO. CALIF. BLUE PRINT CO. -



322

201

PAGE 6 OF 14

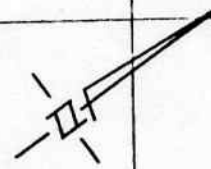
SURVEY OF 4 TIES

SURVEY BY WESLEY R. LIND R.C.E. 16362

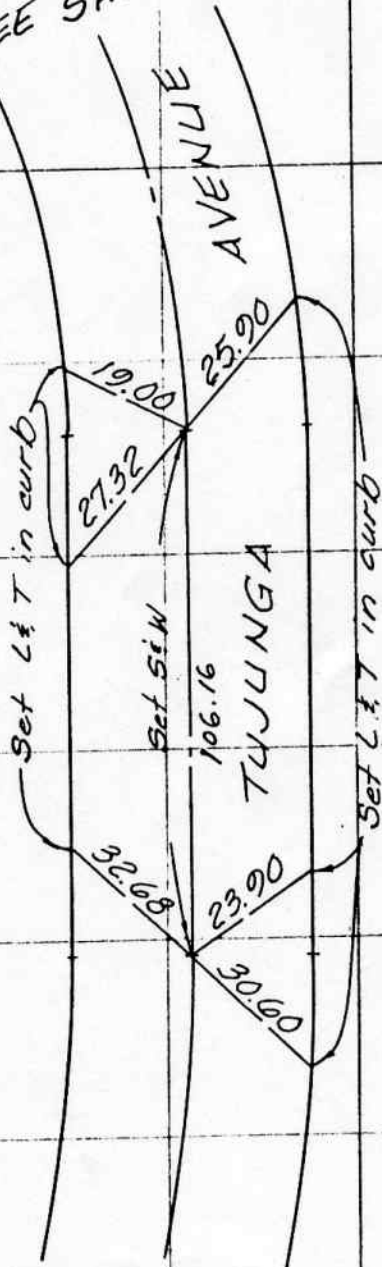
TR. No. 28292

DATE MAY 30, 1984

SEE SHT. 1



SO. CALIF. BLUE PRINT CO. -



SEE SHT. 4