

SAN FER. BLVD  
No. 80.

Cont on  
bet p 12

314

MORGAN AVE  
TO SPK  
AT LAND'S

11  
97

B187A 1025,38

LANDS

No. Bound

N 44° 57' 38" W

237.09M

9+60.49  
Set L&T

104000 KEELER  
Set L&T per Ties  
FC 1787-22

1879  
R&M

FD L&FC Top  
in CURB  
per FC 1787-22

ALLEY

KEELER ST.

486.85  
N 00° 00' 22" W

7+23.40  
Set L&T

44° 57' 16" Rec.  
44° 57' 23" Meas.

100.86M

91.28M  
Set Spk T&W

543.11 ALI.  
Set L&T

BLVD.

237.09M

55.92M

ROGERS PL.

Set L&T  
in CURB

1030

257M

Set L&T  
in CURB

Set L&T  
in CURB

1030

231M

4+21.30 No 80 S.F.R.O.  
3+21.75 KEELER  
Set L&T

N 55° 32' 03" W

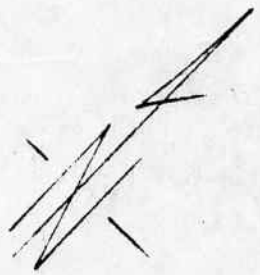
Ed Spk T&W  
per FC 1787-54

243.07M  
243.09 Rec.

SAN FERNANDO  
R=516

2+43.21 EC  
Set Spk T&W

cont. from  
top p 10



JUNE 1961

W. H. HARRISON  
OF HARRISON

ILL

130

LA-4-B7D  
ROGERS PLACE

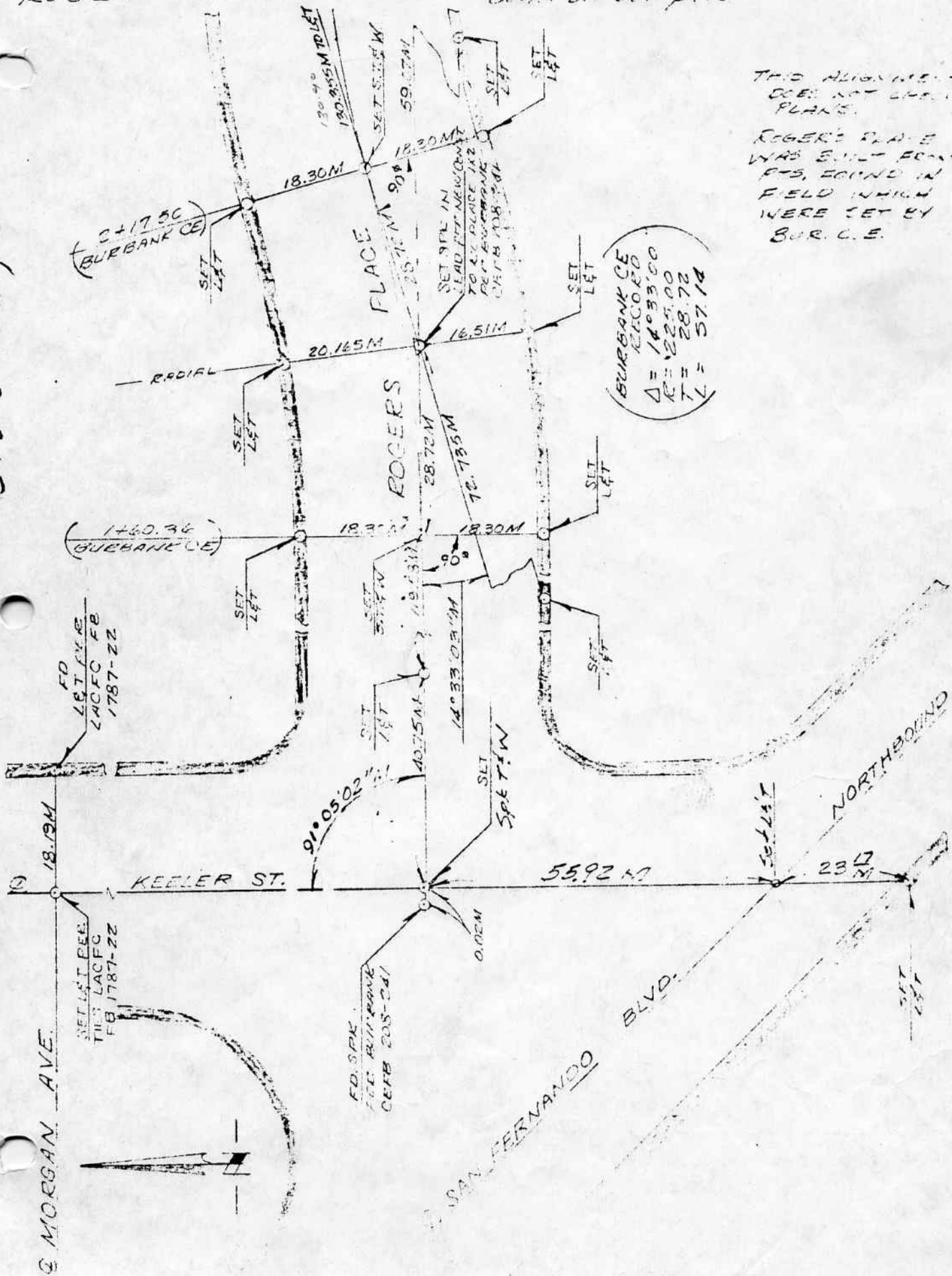
A24.001

314  
cont on bot p. 16

15

99

B1810 M20,58



THIS ALIGNMENT  
DOES NOT CARRY  
PLANS.

ROGERS PLACE  
WAS BUILT FROM  
PDS, FOUND IN  
FIELD WHICH  
WERE SET BY  
BUR. C.E.

BURBANK CE  
RECORDED  
 $\Delta = 14^{\circ}33'00''$   
 $R = 225.00$   
 $T = 28.72$   
 $L = 57.14$

VIZ

5-5-60

5-5-60

ROGERS PL

314

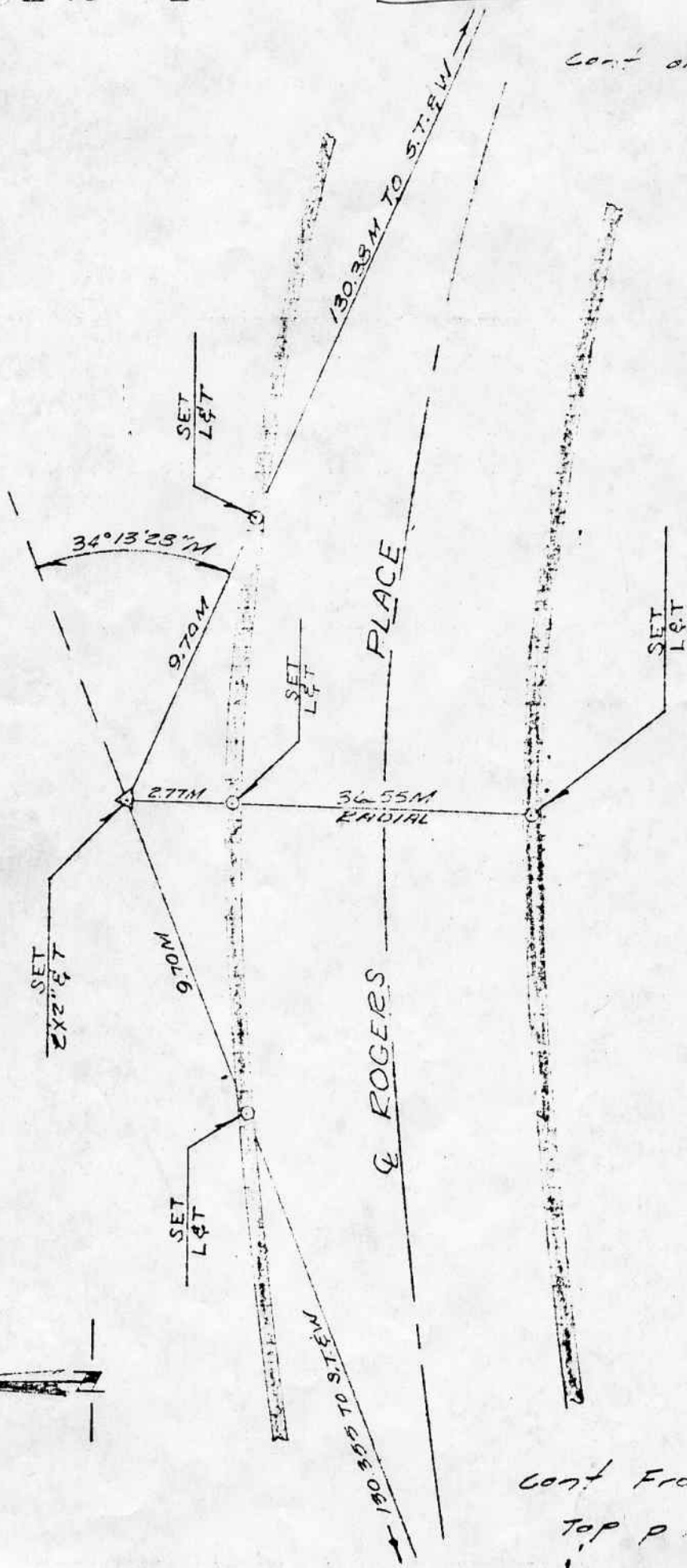
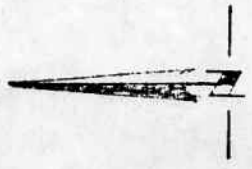
10101

Cont on bot p 17

B121-14 28, 29

VII

WALLACE & PTY 3-3-60  
OF FAYESEA

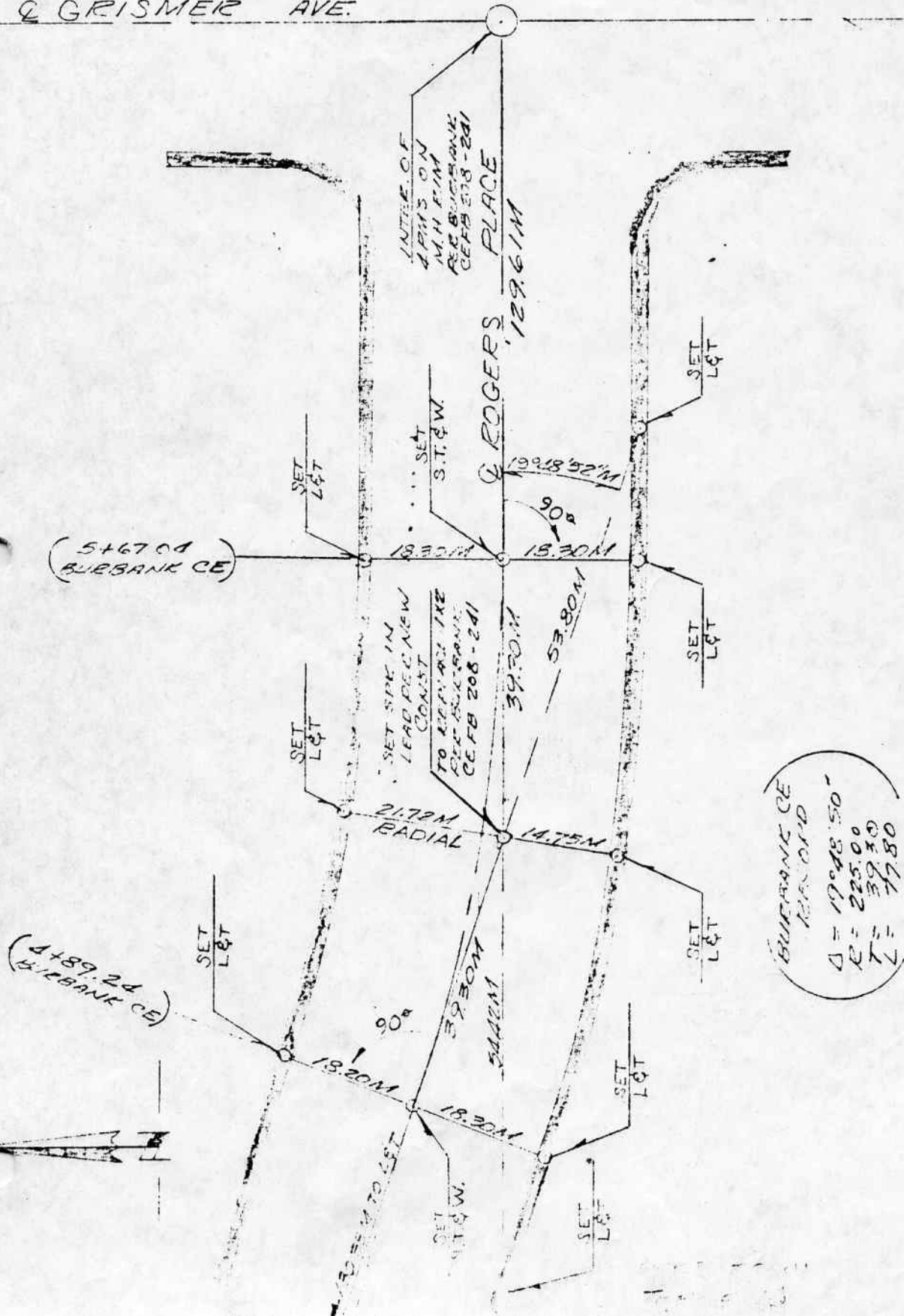


BLAIRBANK CE  
RECORD  
 $\Delta = 34^{\circ}13'10''$   
 $T = 140.67$   
 $R = 455.00$   
 $L = 271.74$

Cont From  
Top p 15

3

Q GRISMER AVE.



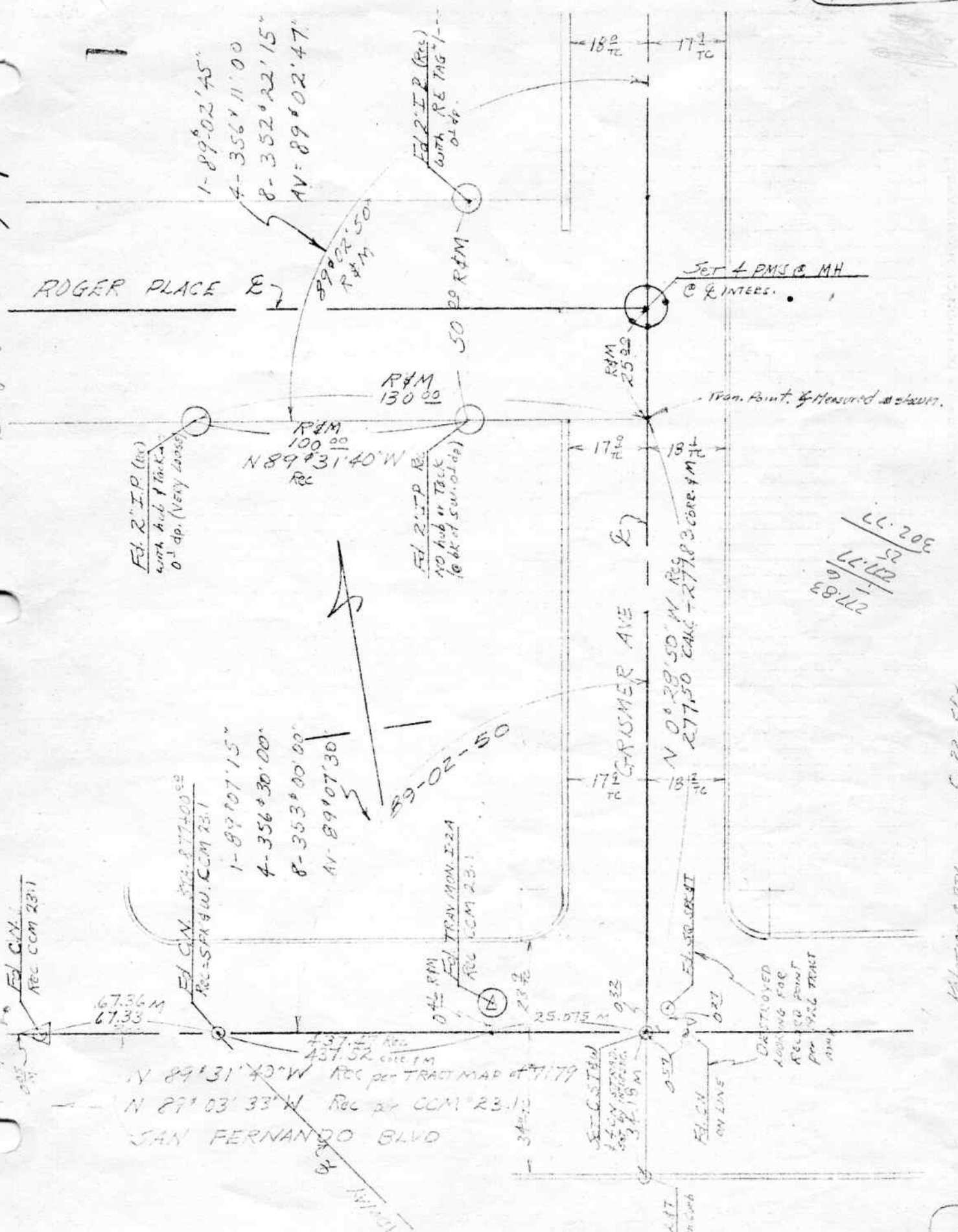
VII

3-3-60

WALLACE'S PTY  
OF FANELKA

319

BIPR M 28, 29



FL 2" I.P. (rec) with hub & tack - 0.1 dp. (Very loose)

FL 2" I.P. R. NO hub or tack (6 dk of sun. or dia)

27.83
9.11
27.72
52
30.205

5-22-56  
JX #

Relocation of 1977

3