

314

MAIN ST
E TIES

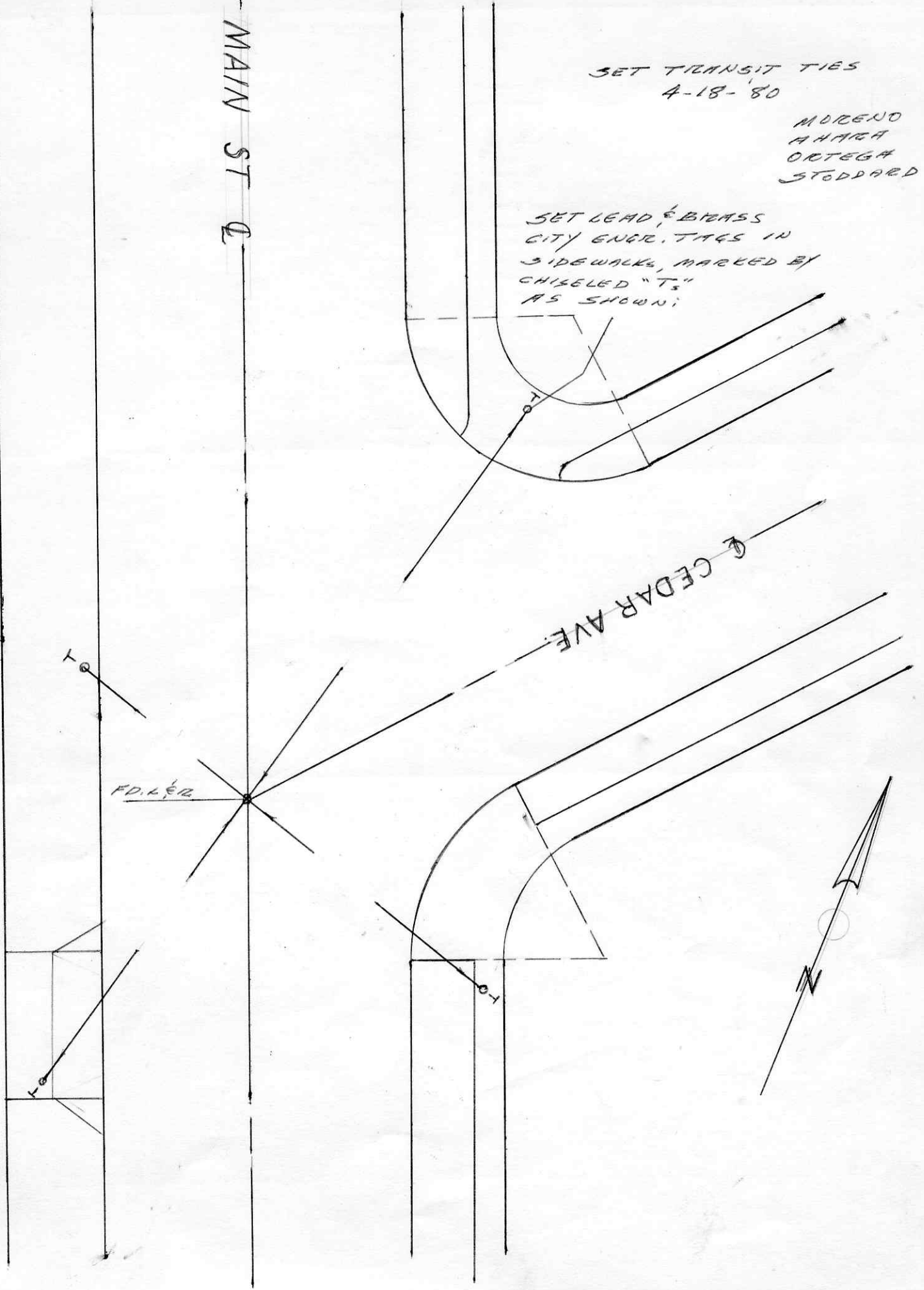
(79)

MAIN ST

SET TRANSIT TIES
4-18-80

MORENO
A HAGA
ORTEGA
STODDARD

SET LEAD & BRASS
CITY ENGR. TIES IN
SIDEWALKS, MARKED BY
CHISELED "T"
AS SHOWN:



FD. L & R

CEDAR AVE

