

SUNSET CANYON DRIVE
CONTROL LINE
FOR PROPOSED REALIGNMENT

3

89

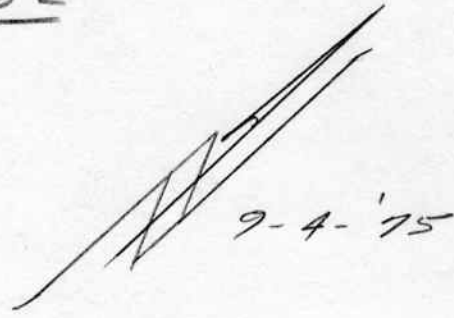
302

SAN JOSE AVE.

FD. L&R

DRIVE

326.69'
MEAS.



MEAS.

④ $\Delta = 14^{\circ} 40' 50''$
 $\Delta EC = 14^{\circ} 38' 58''$
 $R = 400'$

SET OUT "X"
P.I.

SUNSET CANYON
MEAS.

FD L&R

MAGNOLIA

BLVD.

SUNSET
R 257.70'

OLD

SET OUT "X"
P.I.

FD. L&R PI

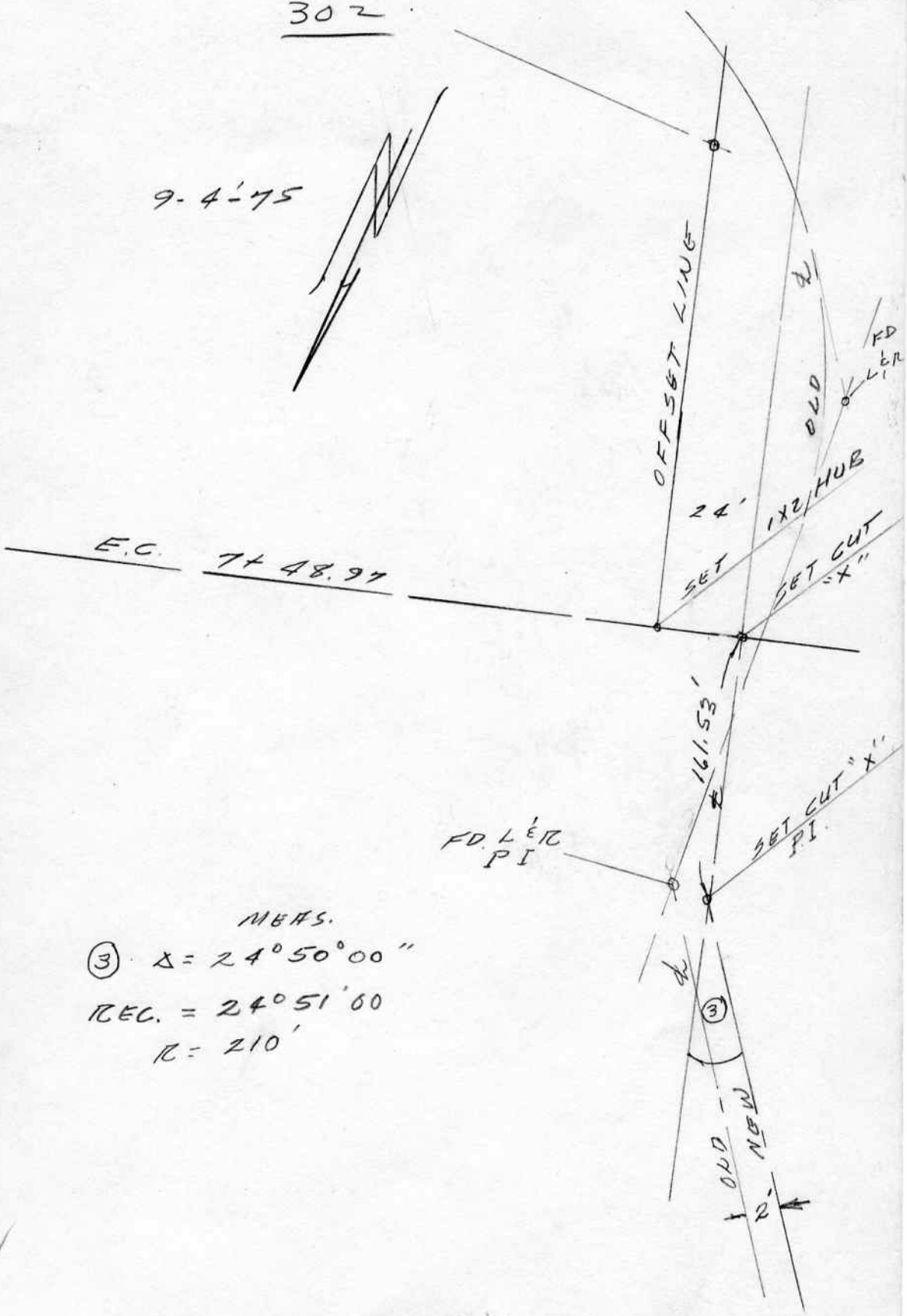
NEW

SUNSET CANYON DR.
 CONTROL LINE
 FOR PROPOSED REALIGNMENT

2
90

302

9-4-75



MBAS.
 (3) $\Delta = 24^{\circ} 50' 00''$
 $R_{EC} = 24^{\circ} 51' 00''$
 $R = 210'$



SUNSET CANYON DRIVE
 CONTROL LINE
 FOR PROPOSED REALIGNMENT
 (MEAS.)

① $\Delta = 34^{\circ} 18' 30''$ 302

{
 $R = 34^{\circ} 15' 00''$
 $R = 210$
 $T = 64.70'$
}

FD. L&R 0.09' OFF LINE
 SET NEW L&T

FD. L&R 0.11' OFF LINE
 SET SPK ON LINE

FD. SPK.

SET CUT "X"

9-A-75

B.C. 4+78.50'

SET 1X2 HUB

SET CUT "X"

FD L&R P.I.

139.63'
 SUNSET

90°

SET PER REC.

② {
 $\Delta = 73^{\circ} 47' 38''$
 $R = 210$
 $T = 157.65$
 $L = 270.47$
}

SET 1X2 HUB P.I.
 ON 24' OFF SET

PROPOSED
 PI

OLIVE AVE 91

DRIVE

FD. P.K.

1400

B.C.

2+25.53

E.C.

ORANGE GROVE

CANYON

47.90'

①

②

24'