

STORM DRAIN PROJECT #609

WINDY AVE TO HOLLYWOOD WAY ON SAN FERNANDO BLVD. ALIGNMENT TIES

302

38
76

Fd. L&E "T"
ON PCC CURB

Fd. L&E "T"
ON PCC CURB

Fd. L&E "T"
ON PCC CURB

SET CUT "X"
ON PCC CURB

SET CUT "X"
ON PCC CURB

SET CUT "X"
ON PCC CURB

SET CUT "X"
ON PCC CURB

Fd. L&E "T"
ON PCC CURB

Fd. L&E "T"
ON PCC CURB

Fd. L&E "T"
ON PCC CURB

Fd. L&E "T"
ON PCC CURB

NOT TO SCALE

S. F. R. R.

EXISTING

BLVD.

FERNANDO

SAN

A OF SURVEY

HOLLYWOOD WAY

AYON ST.

LIMA AVE.

44.17'

95.51'

47.68'

108.86'

89.74'

37.68'

52.31'

52.31'

87.24'

44.30'

39.97'

62.07'

SET ST T

SET NAIL

SET ST T

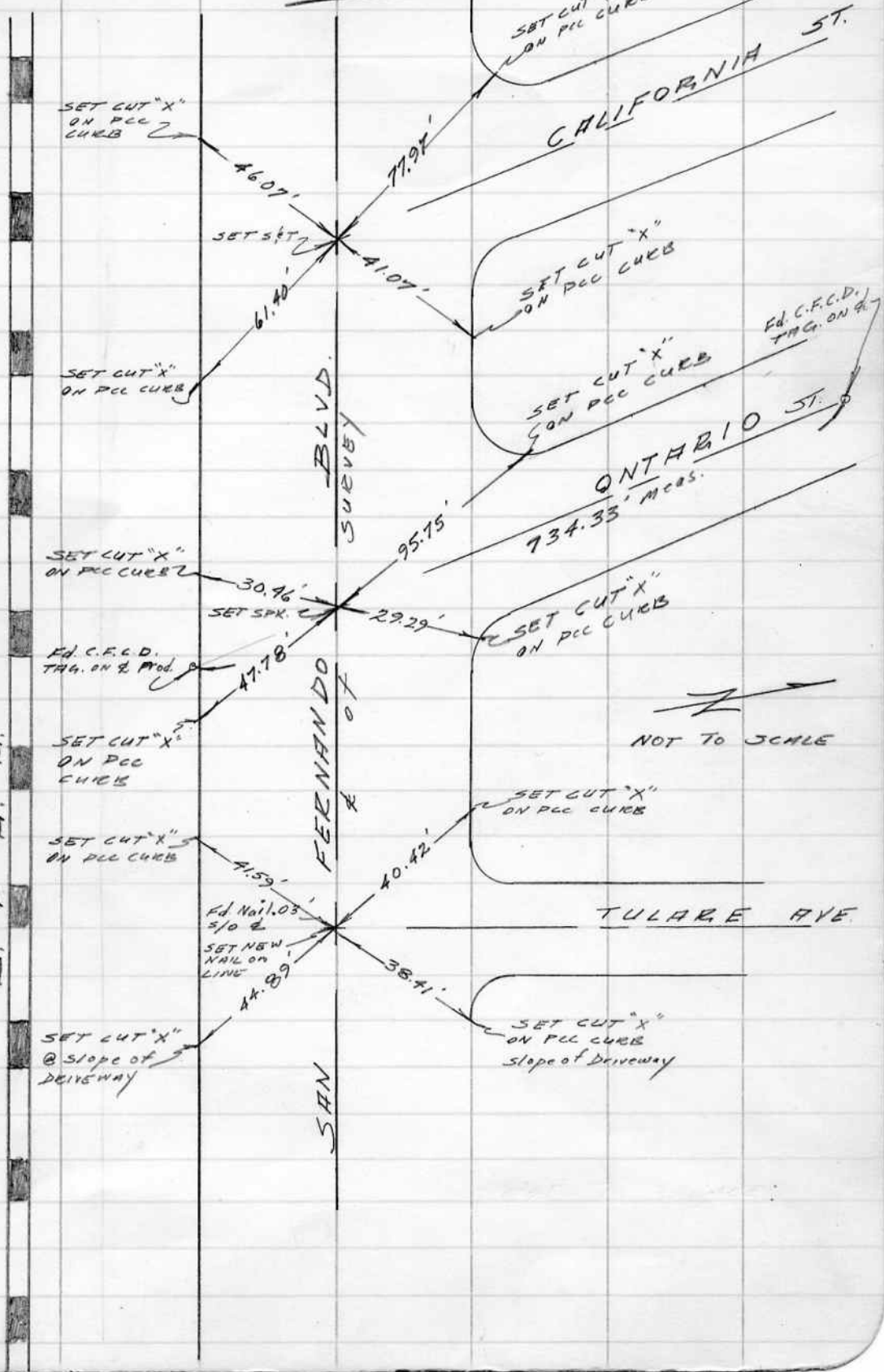
STORM DRAIN PROJECT #609

WINONA AVE. TO HOLLYWOOD WAY ON
SAN FERNANDO BLVD.
& ALIGNMENT TIES

39
77

302

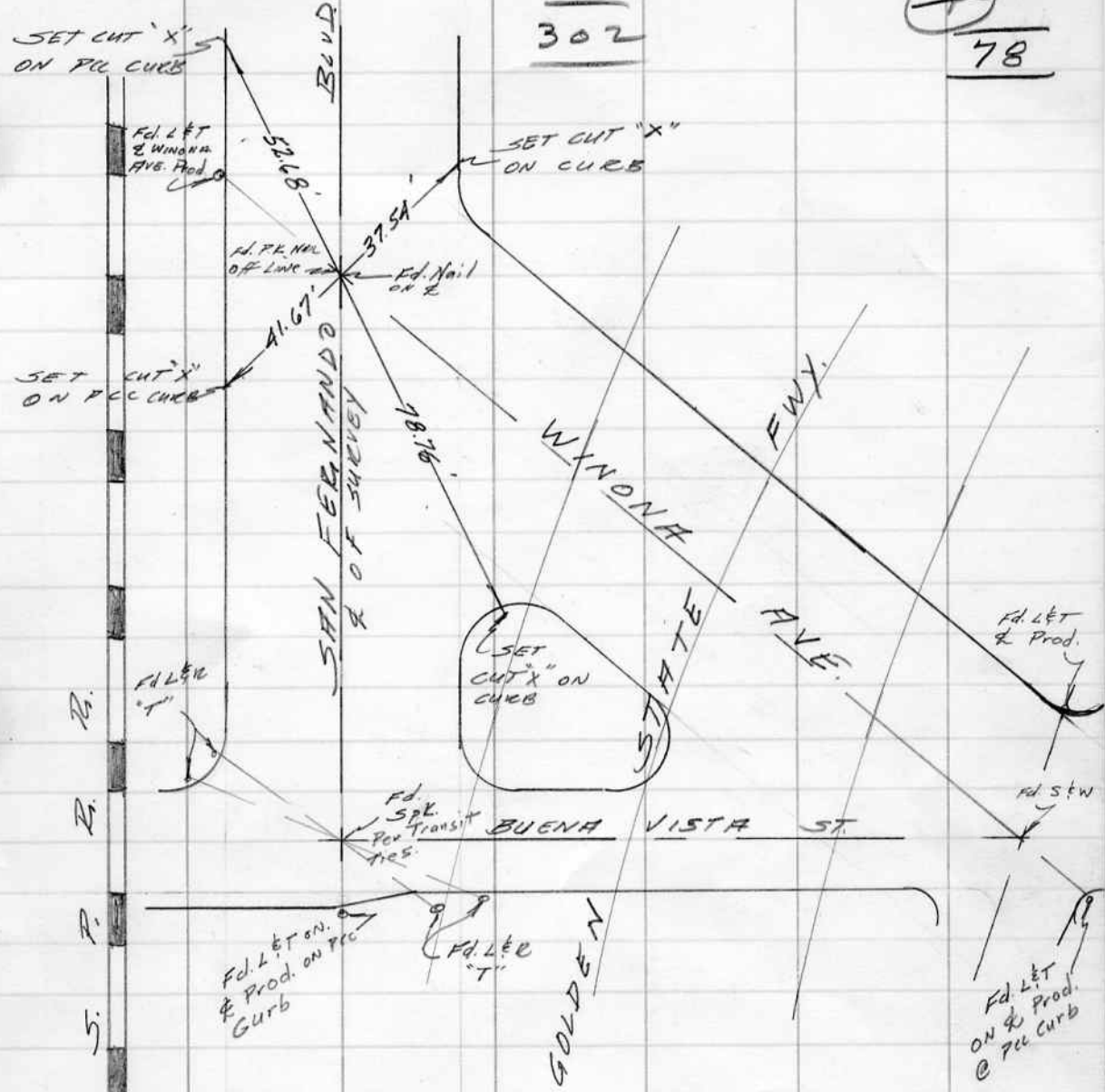
S. P. R. B.



WINONA AVE. TO HOLLYWOOD WAY ON
SAN FERNANDO BLVD.
& ALIGNMENT TIES

90
78

302



NOT TO SCALE