

Loose Leaf Book No 105

137

-105-

302

18

Country Club Drive

Sunset Canyon Drive To L.A. County
Flood Control Dam in Sunset Canyon

Tracts No 6996 and 10797

Notes

See Field BOOK No 43 Page 97 to 105 For
Tics Station 0+00 To 12+47.42 Plan No

Trump

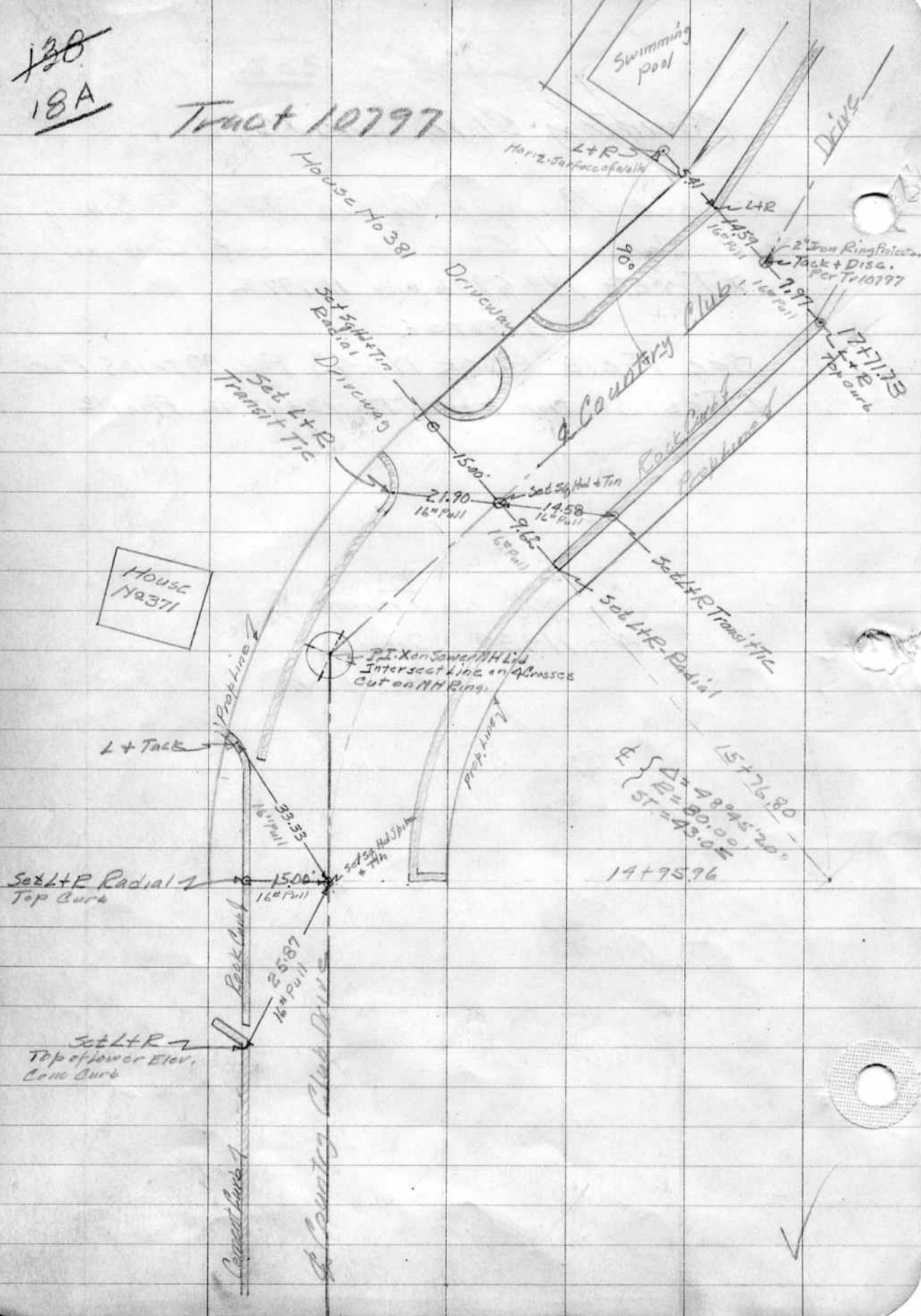
4-11-39

Smith

Thompson

~~130~~
18A

Tract 10797



House No 371

Set L+R Radial Top Curb

Set L+R Top of lower Elev. Conc Curb

$\Delta = 48^{\circ}45'20''$
 $E = 80.00$
 $ST = 43.04$

14+95.96

15+76.80

17+71.73

House No 381

Swimming Pool

Drive

Driveway

COUNTRY CLUB

Country Club

Set L+R Radial
 Set L+R Transit T/C
 Set L+R Radial
 Set L+R Transit T/C

Intersect line of addresses Cut on MH Ring

L+Tack

Prop Line

Prop. Line

Rock Curb

Country Club Drive

Conc Curb

Horiz. Surface of Finish

L+R

L+R

2" Iron Ring for 2" Tack + Disc. Per Tr 10797

80°

Set 5/8" Radial

Set 5/8" Radial

Set L+R Transit T/C

15.00'

21.90'

14.58'

9.62'

16.58'

16.58'

16.58'

16.58'

16.58'

16.58'

16.58'

16.58'

16.58'

16.58'

16.58'

16.58'

16.58'

16.58'

16.58'

16.58'

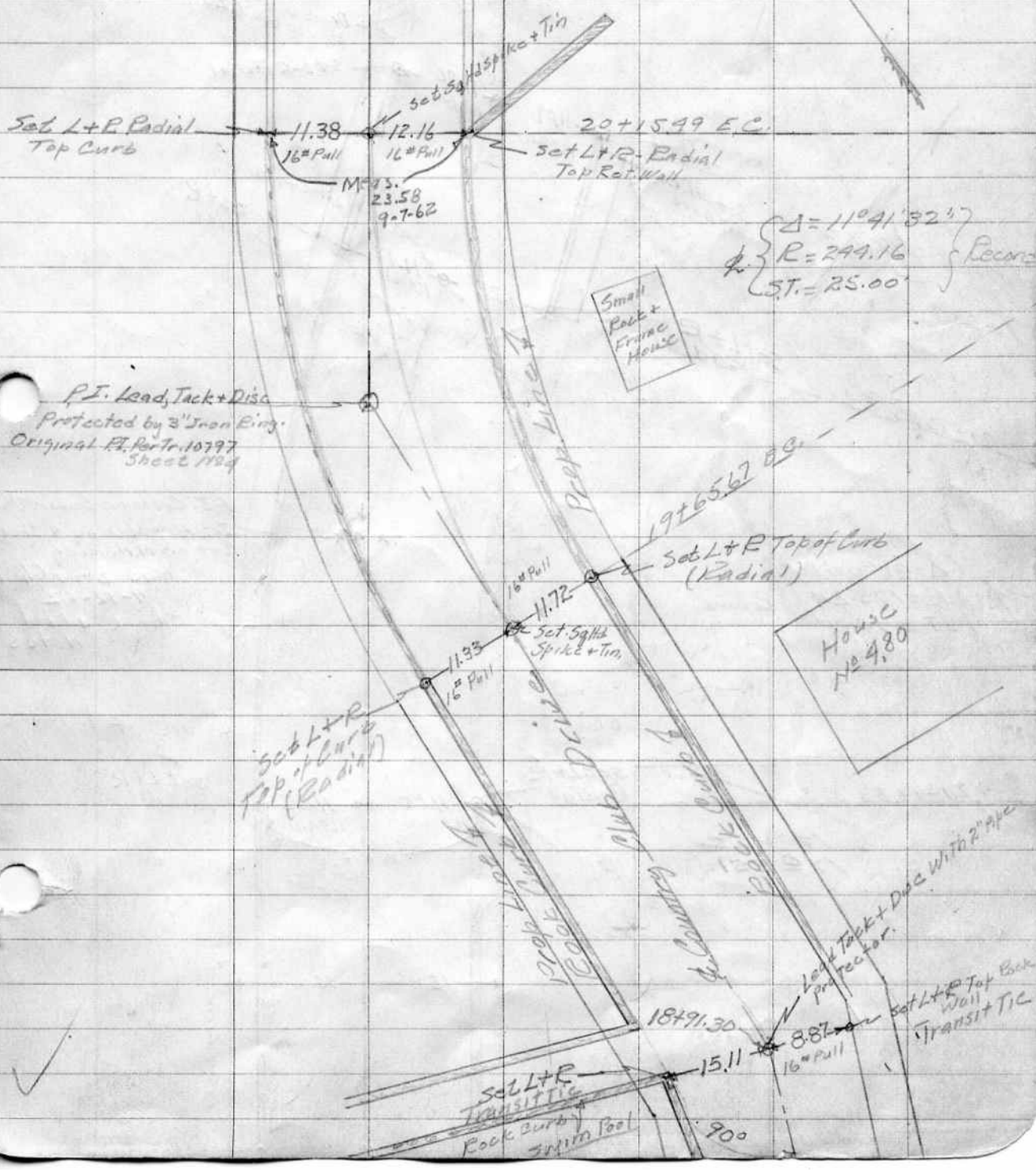
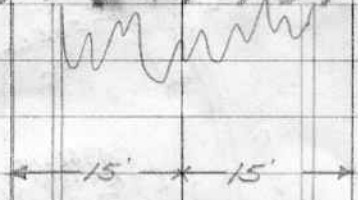
16.58'

16.58'

16.58'

16.58'

Tract 10797



P.F. Lead, Tack + Disc
Protected by 3" Iron Ring
Original Pl. for Tr. 10797
Sheet 1184

$\Delta = 110^{\circ} 41' 32.7''$
 $R = 244.16$
 $ST = 25.00'$ } Record

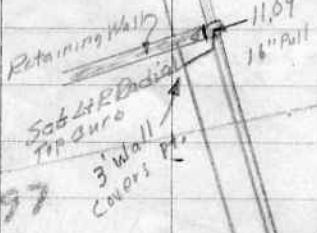
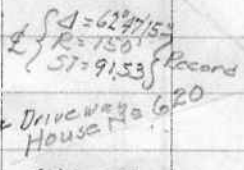
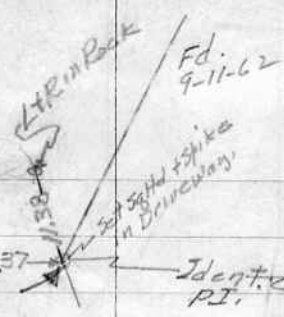
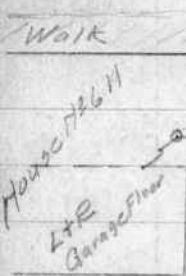
House
No 480

Set L+R
Transit TIC
Rock Curb &
Swim Pool

Lead Tack + Disc With 2" Pipe
protector.

Set L+R Top Back
Wall
Transit TIC

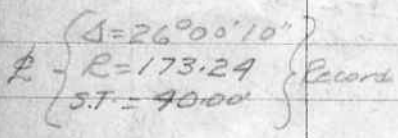
140
19A



Tract No 6996
Tract No 10797



21+92.95 E.C.



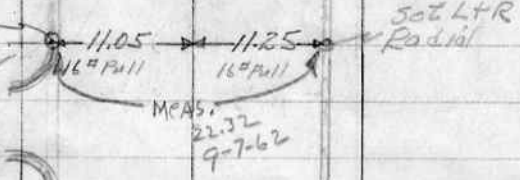
P.I. Cross on Sewer M.H. Lid
Intersect Line on 9 Crosses
Cut on M.H. Ring
(Has been Checked)
9-12-62
check added
Notes

Block set ON TOP

21+13.83 B.C.

HOUSE NO 551

F.d. 9-4-62



F.d. 9-4-62

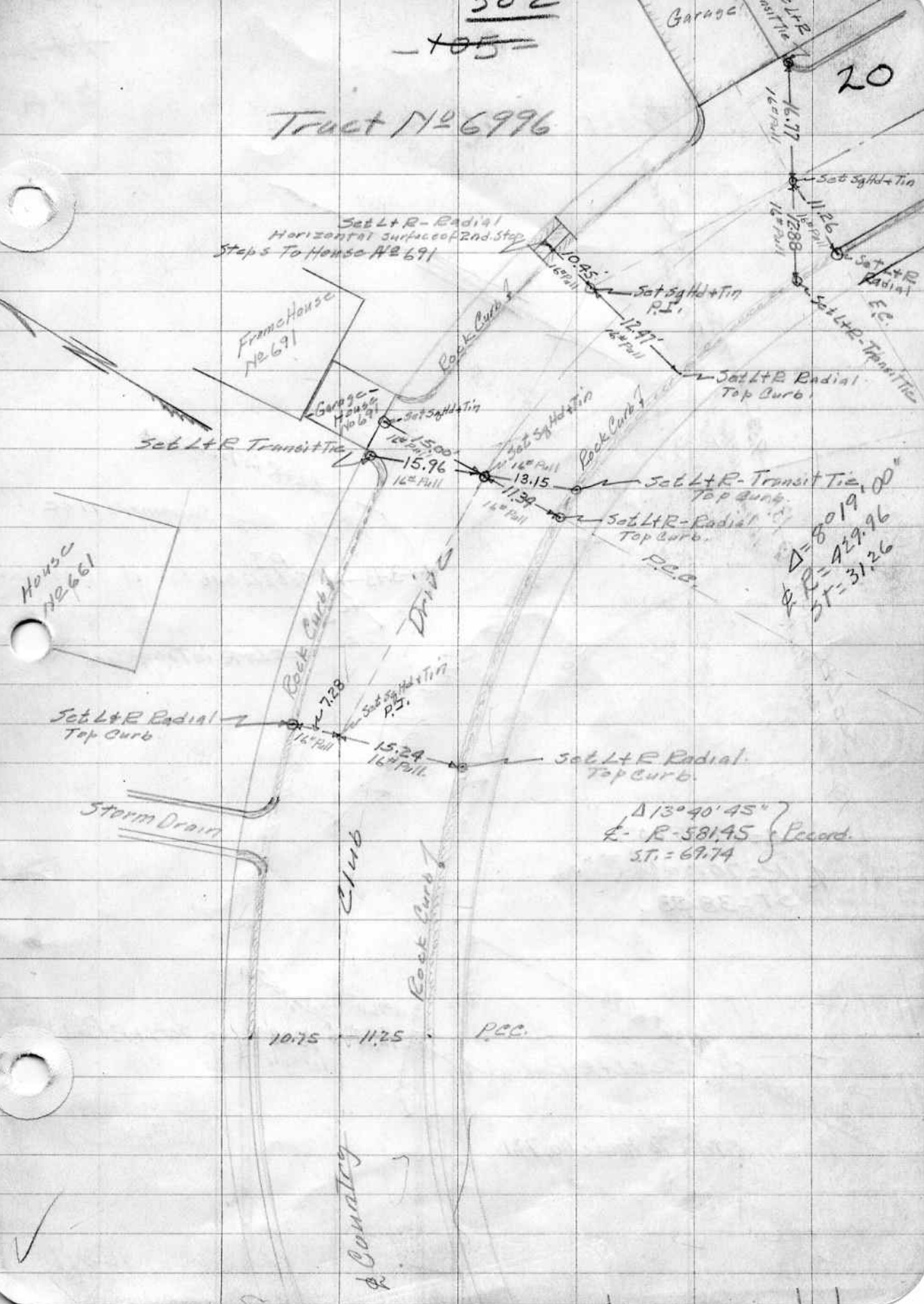
15.00 15.00

Back Curb
Prop Line



Tract No 6996

20



Set Lt R - Radial
Horizontal surface of 2nd step
Steps To House No 691

Frame House
No 691

House
No 661

Set Lt R Transit Tie

Driving

Set Lt R Radial
Top Curb

Storm Drain

Club

Rock Curbs

Country

Garage

Garage House
No 691

Set Lt R - Transit Tie
Top Curb

Set Lt R Radial
Top Curb

P.C.C.

Set Lt R Radial
Top Curb

$\Delta 13^{\circ}40'45''$
E - R - 581.95 } Record
S.T. = 67.74

10.75 11.25 P.C.C.

$\Delta = 8019.00''$
 $R = 429.96$
 $S.T. = 31.26$

0.95

Set Lt R Radial
P.S.

12.97

Set Lt R Radial
Top Curb

15.96

13.15

11.39

Set Lt R - Transit Tie
Top Curb

Set Lt R Radial
Top Curb

P.C.C.

7.28

Set Lt R Radial
P.S.

15.24

Set Lt R Radial
Top Curb

$\Delta 13^{\circ}40'45''$

E - R - 581.95 } Record
S.T. = 67.74

10.75 11.25 P.C.C.

$\Delta = 8019.00''$
 $R = 429.96$
 $S.T. = 31.26$

0.95

Set Lt R Radial
P.S.

12.97

Set Lt R Radial
Top Curb

15.96

13.15

11.39

Set Lt R - Transit Tie
Top Curb

Set Lt R Radial
Top Curb

P.C.C.

7.28

Set Lt R Radial
P.S.

15.24

Set Lt R Radial
Top Curb

$\Delta 13^{\circ}40'45''$

E - R - 581.95 } Record
S.T. = 67.74

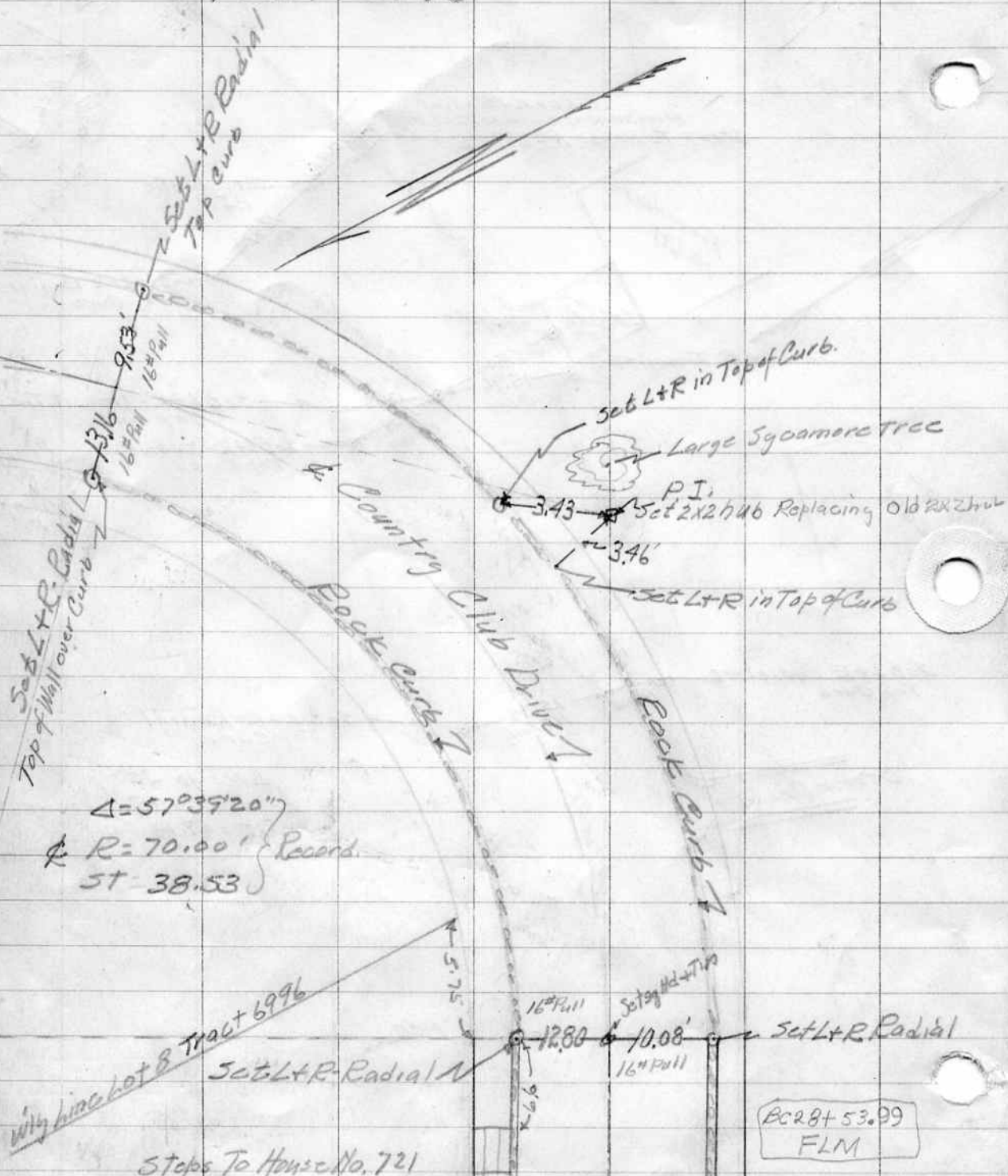
10.75 11.25 P.C.C.

$\Delta = 8019.00''$
 $R = 429.96$
 $S.T. = 31.26$

142

20A

Tract 6996



BCRB+ 53.99
FLM

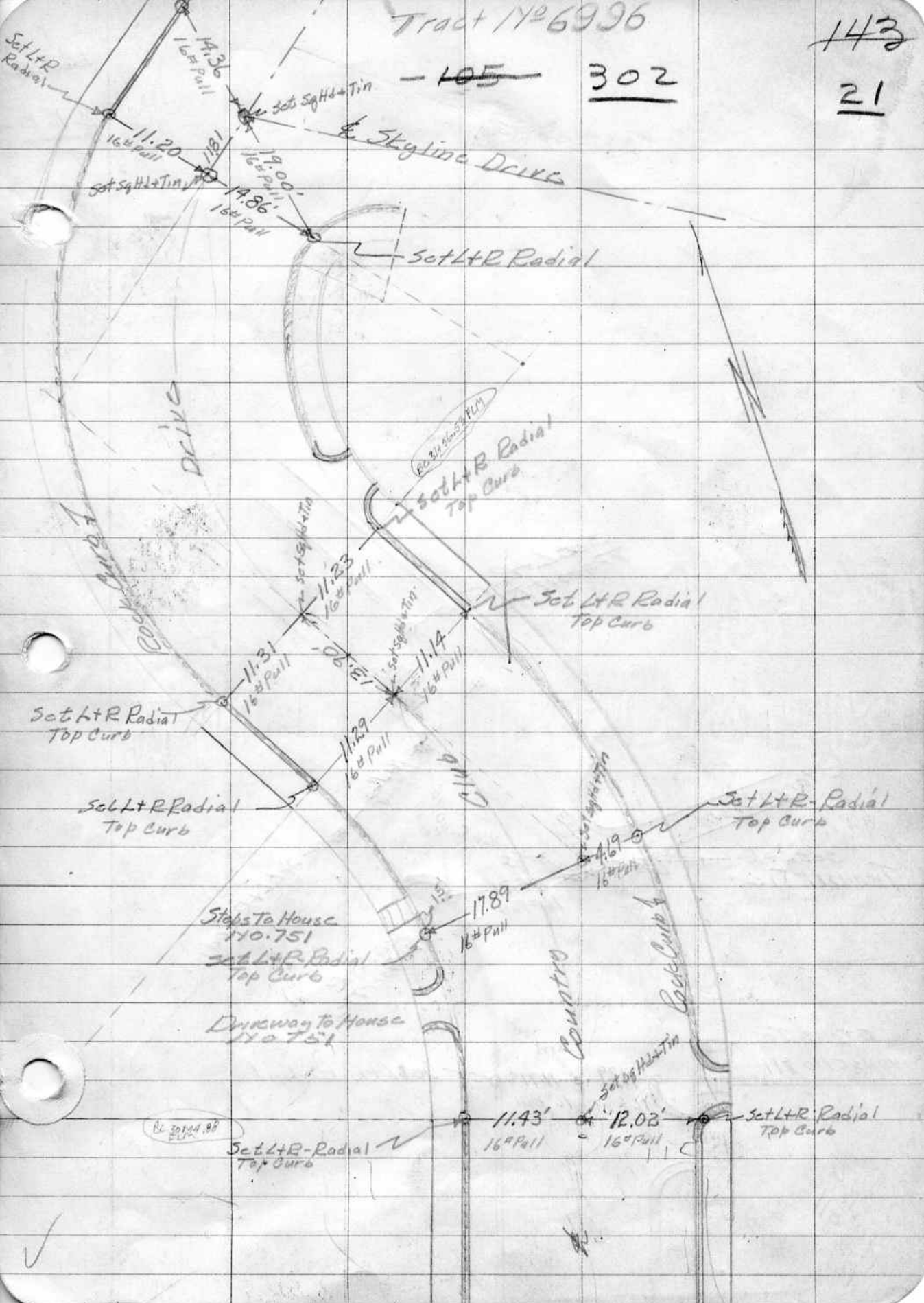


Tract No 6936

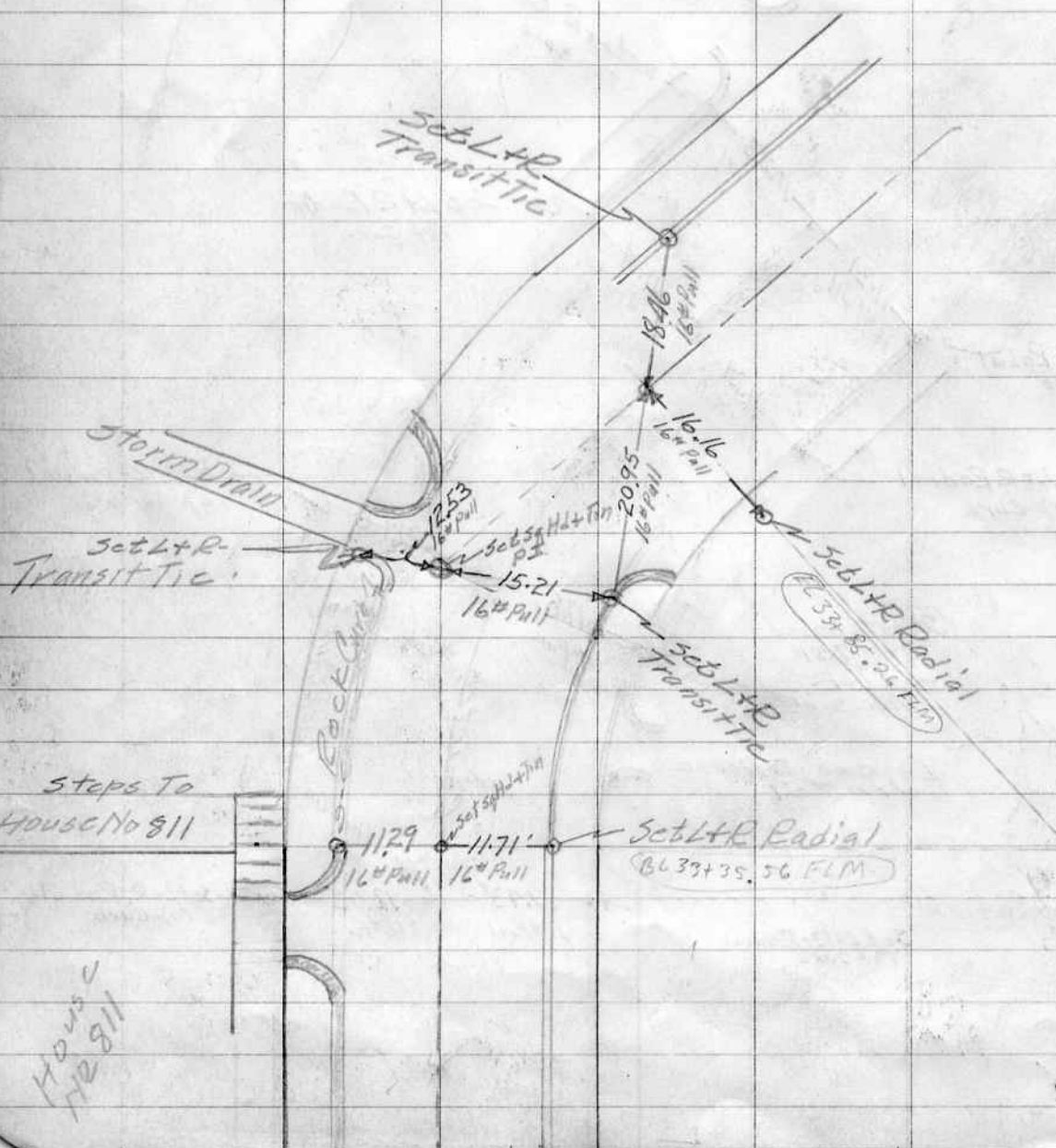
143

~~105~~ 302

21



143A
21A



Steps To
House No 911

House
No 911

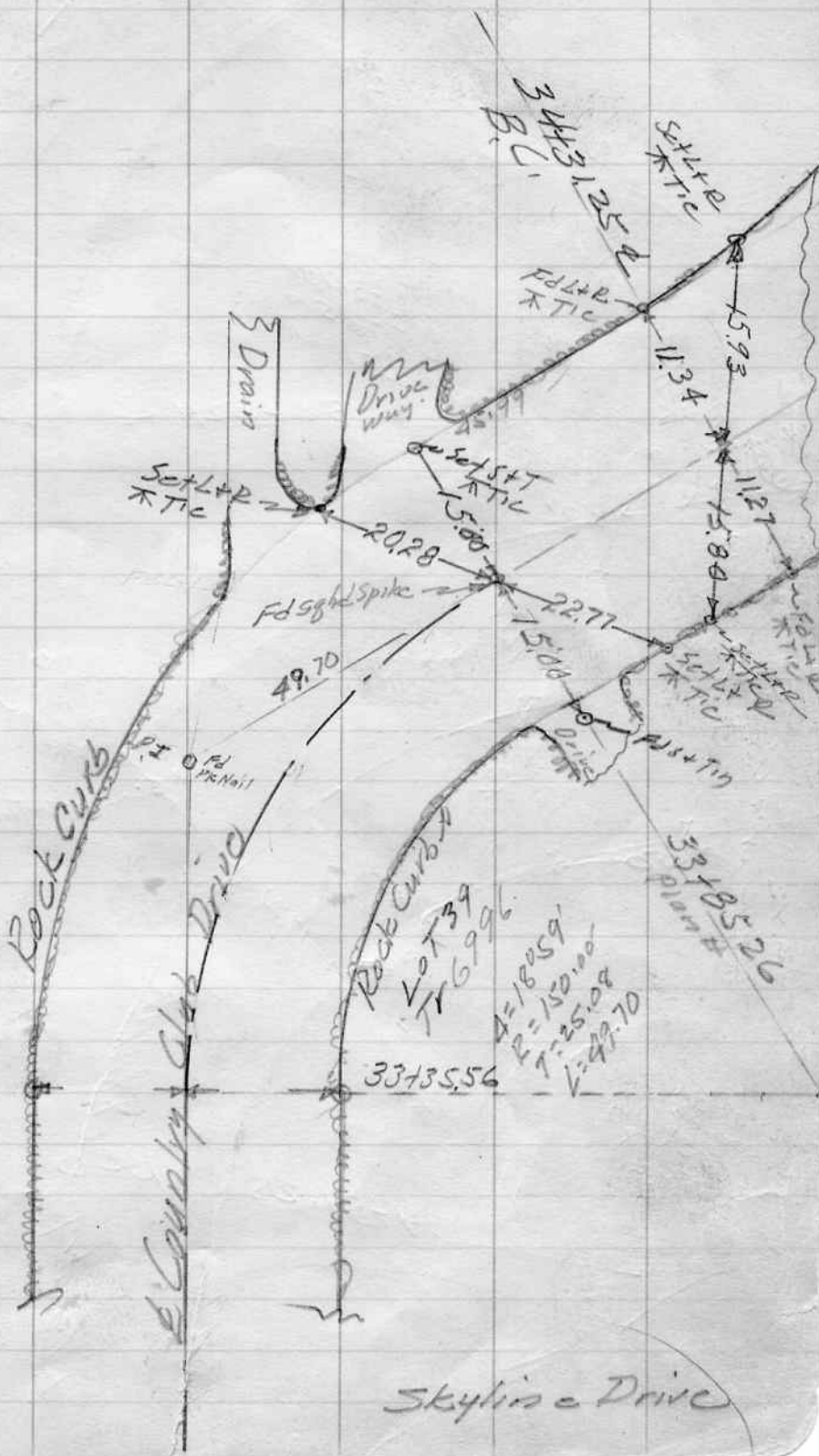
Set L+R Radial
(B) 39+35.56 FLM

Country Club Drive - Olive Ave
Easterly $\frac{1}{2}$ Ties

~~143 B~~

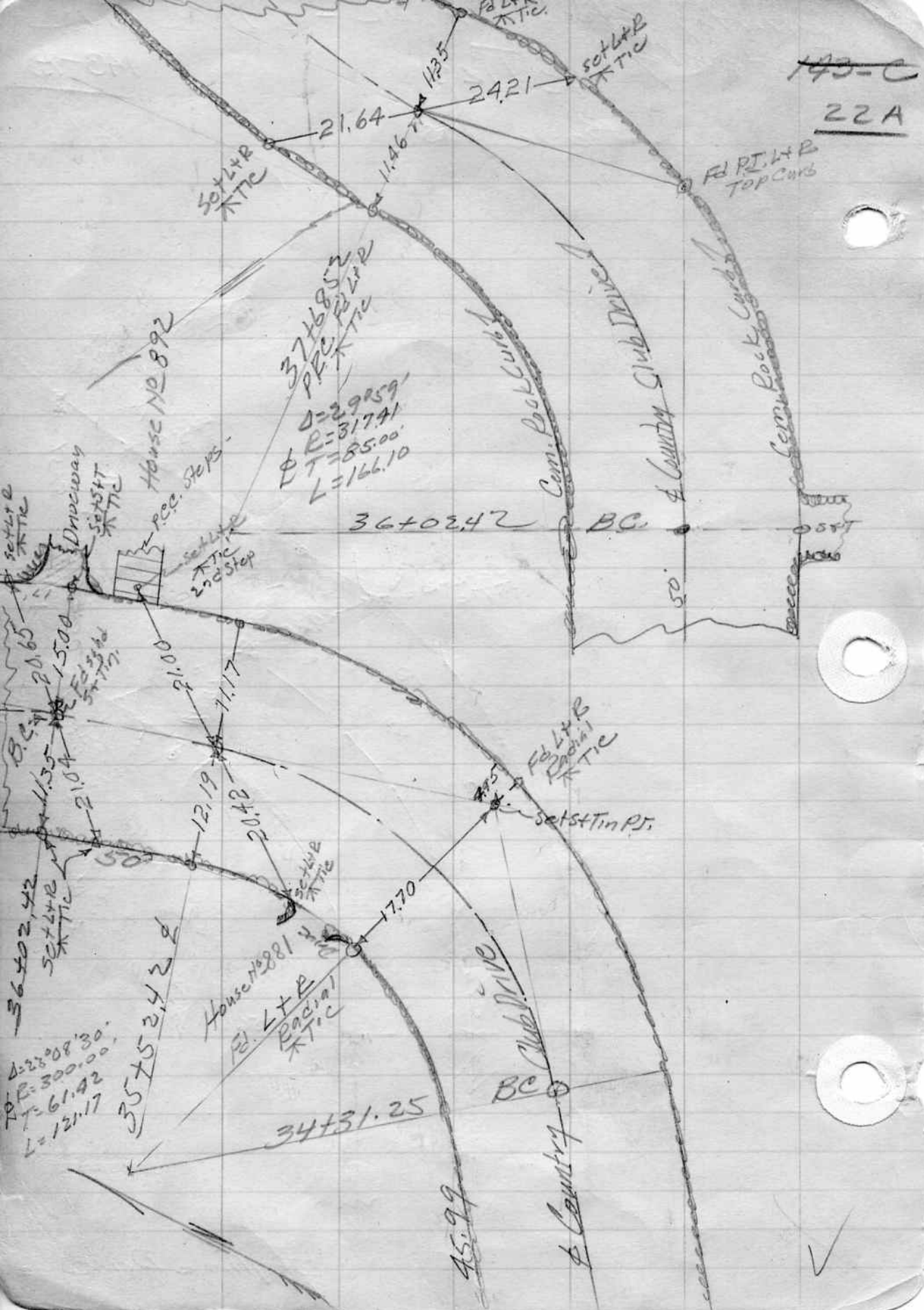
Book ~~108~~
302

22



143-C

22A



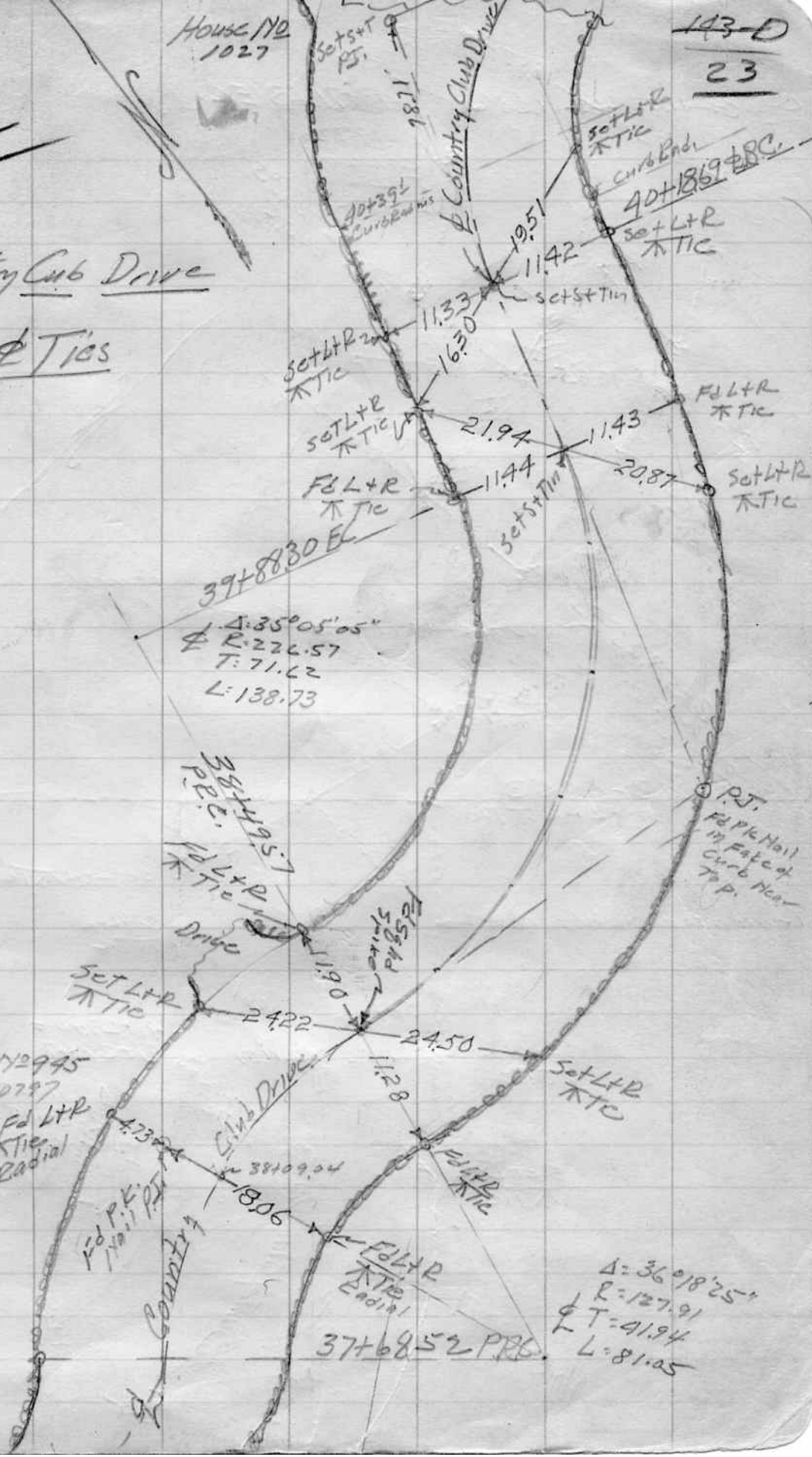
Book
105
302

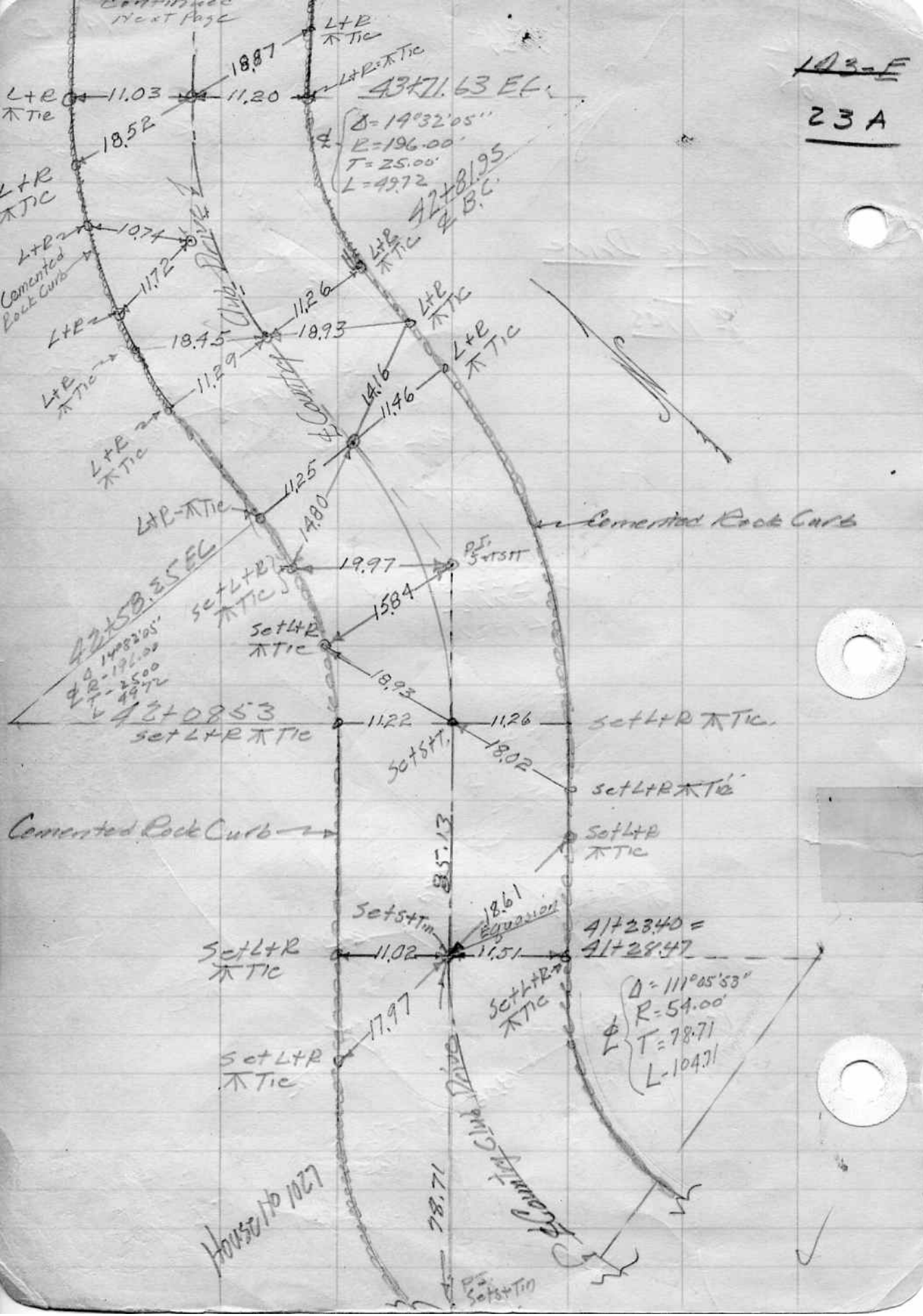
House No
1027

143-D
23

Country Club Drive

ϕ Tics





~~103-F~~
23A

Country Club Drive

Book 105
~~Page 143 F~~

302

24

$S 8^{\circ} 45' 15''$
 $R = 388.96$
 $T = 30.00'$
 $L = 59.88$

$48 + 32.69$ E.C.
 $\Delta = 11009' 25''$
 $R = 307.15$
 $T = 30.00'$
 $L = 59.88$

$47 + 72.88$ B.C.

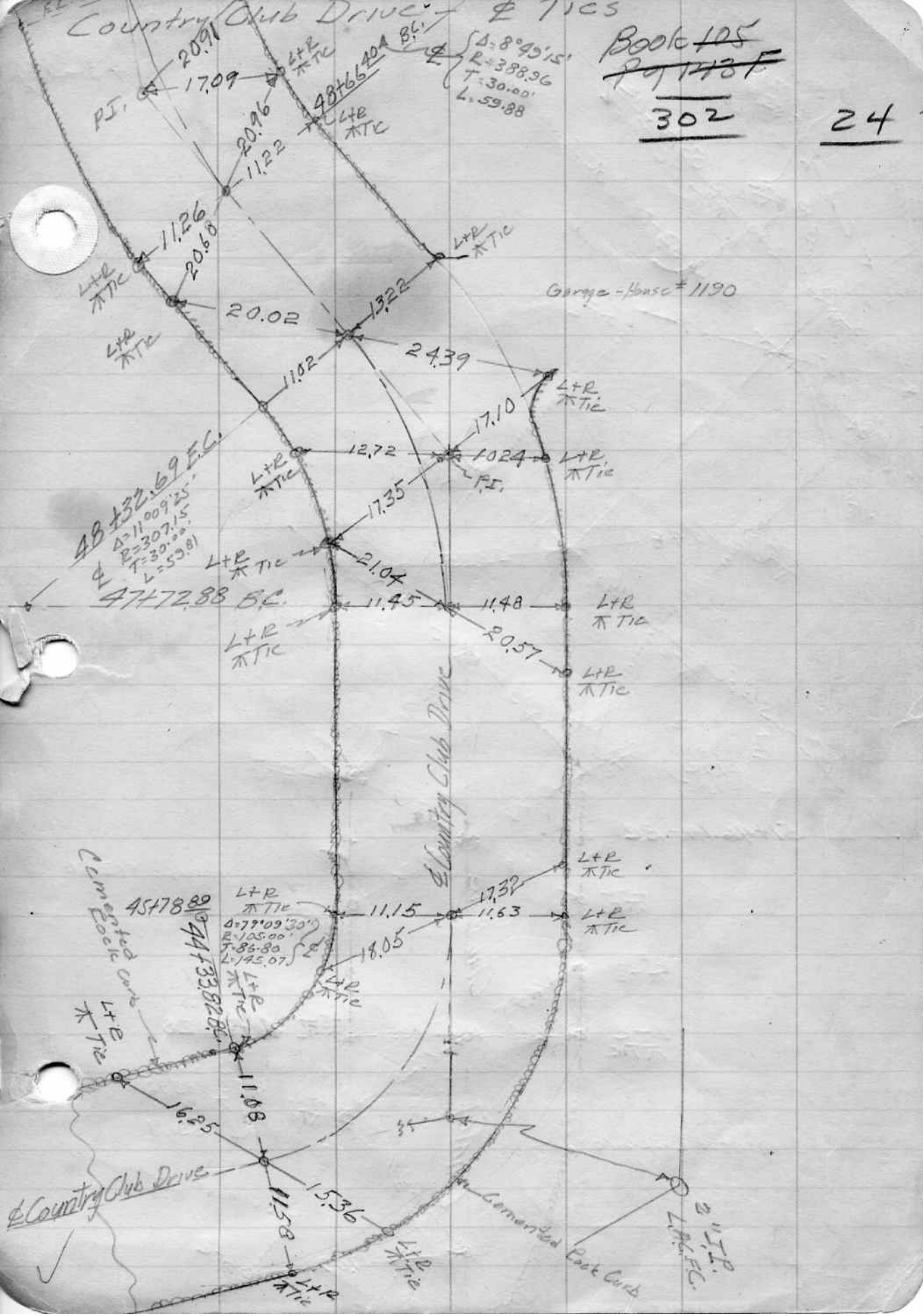
$45 + 78.88$
 $44 + 33.82$ B.C.
 $\Delta = 79109' 30''$
 $R = 105.00'$
 $T = 82.80'$
 $L = 145.07'$

Commented Curve

Country Club Drive

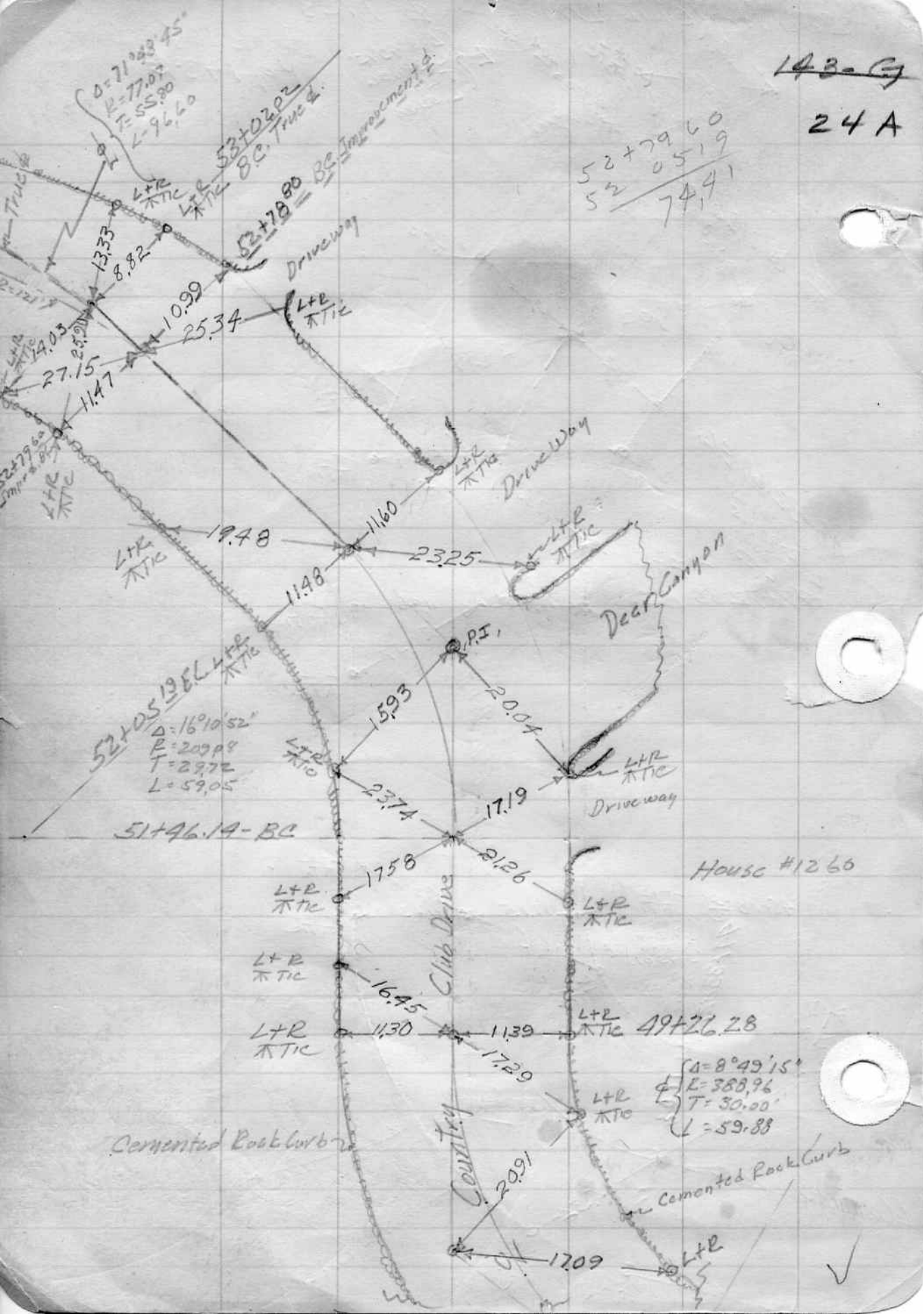
Commented Back Curve

2" I.P.
L.P. E.C.



143-G

24A

$$\begin{array}{r} 52+79.60 \\ 52 \quad 05.19 \\ \hline 74.41 \end{array}$$


Country Club Drive - 2 Tics

Book
~~105~~
302

~~143-I~~

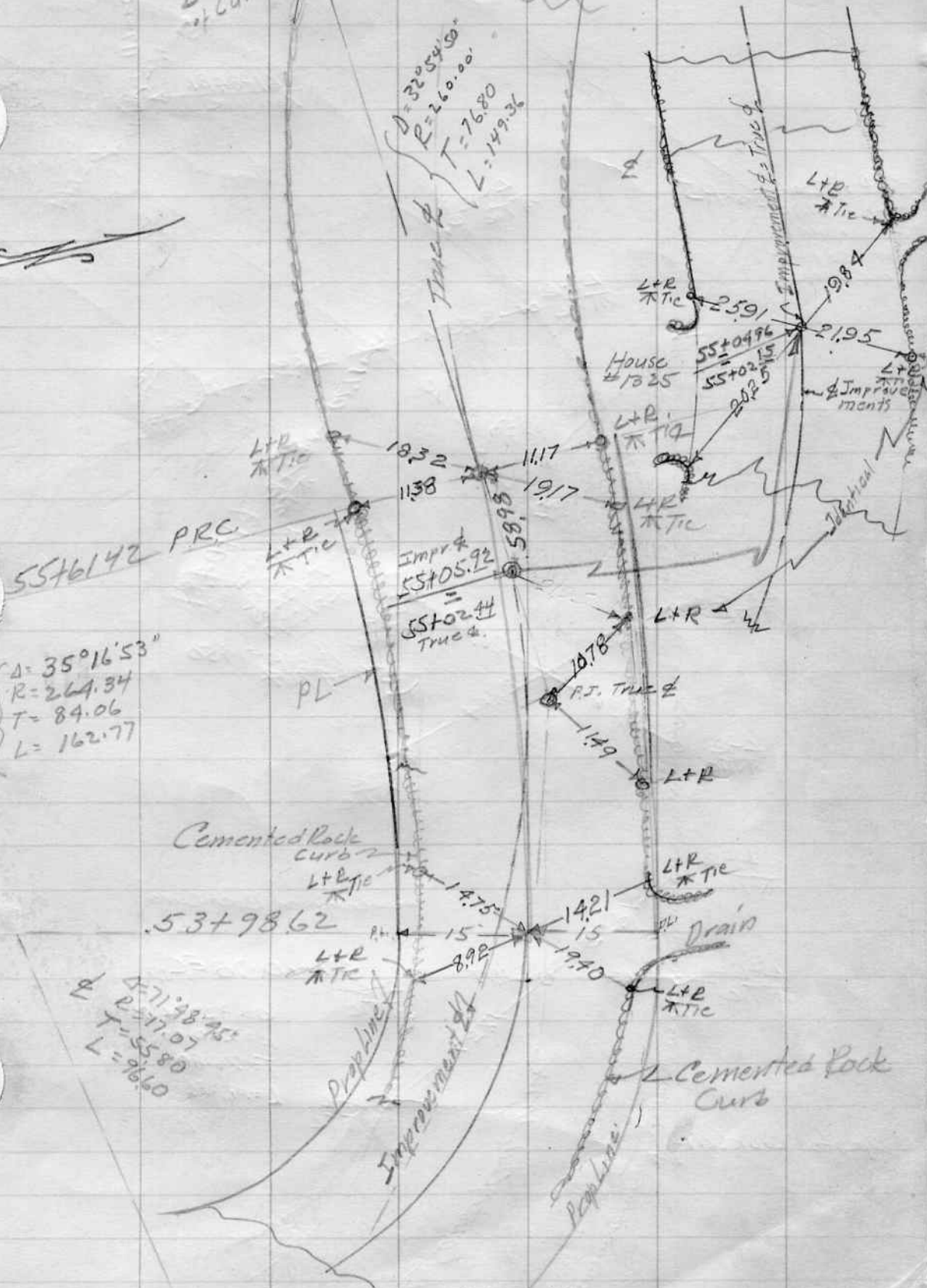
25

P.I.
L+R TOP
+ CURB

$\Delta = 32^{\circ}54'50"$
 $R = 260.00$
 $T = 76.80$
 $L = 149.34$

$\Delta = 35^{\circ}16'53"$
 $R = 264.34$
 $T = 84.06$
 $L = 162.77$

$\Delta = 71^{\circ}38'45"$
 $R = 111.07$
 $T = 55.80$
 $L = 96.60$



F. J. ... P.I.
Set 2 x 2 Stake P.I. (Two inches)

Set 1 x 24mb
High on Slope
of Mountain
About 50' Above
Road Grade,

