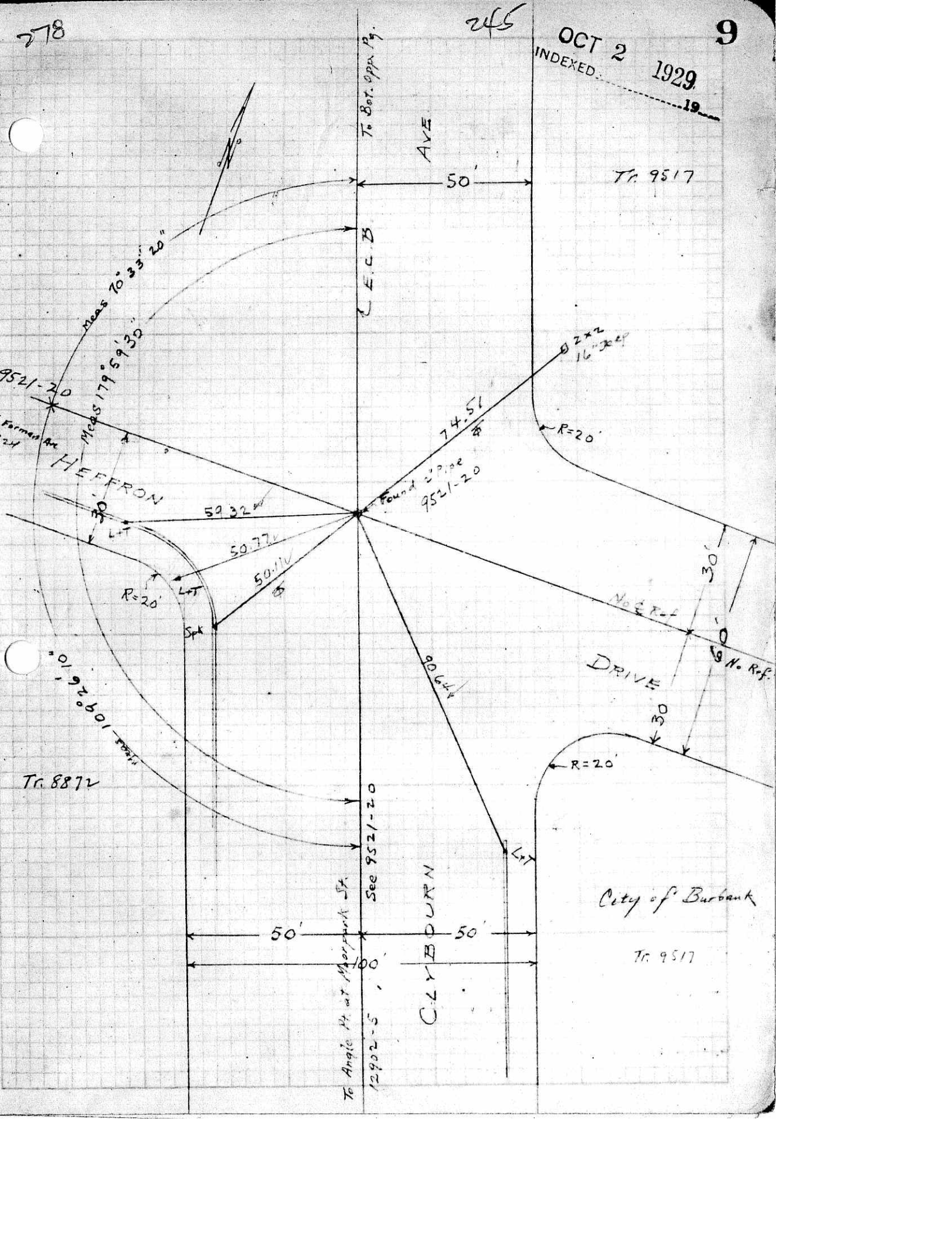


278

245

OCT 2 1929
INDEXED

9



To Bot. opp. Pg.

AVE

50'

Tr. 9517

E.C.D.

Bear 70° 33' 20"

Meads 179° 59' 32"

9521-20

Former Ave

HEFFRON

59.32

74.51

Found 2" pipe
9521-20

R=20'

50.77

50.11

R=20'

L&T

Spk

No. Ref.

30'

DRIVE

30'

No. Ref.

R=20'

Tr. 8872

See 9521-20

To Angic Pt. at Moorpark St.

50'

CLYBURN

50'

City of Burbank

Tr. 9517

100'

To Angic Pt. at Moorpark St.

12902-5