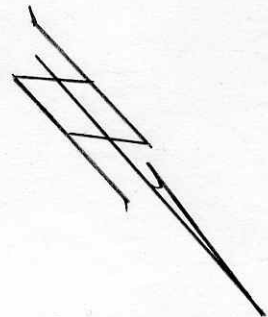


TOLUCA LAKE AVENUE
 &
 TOLUCA LAKE LANE
 &
 TIES

278

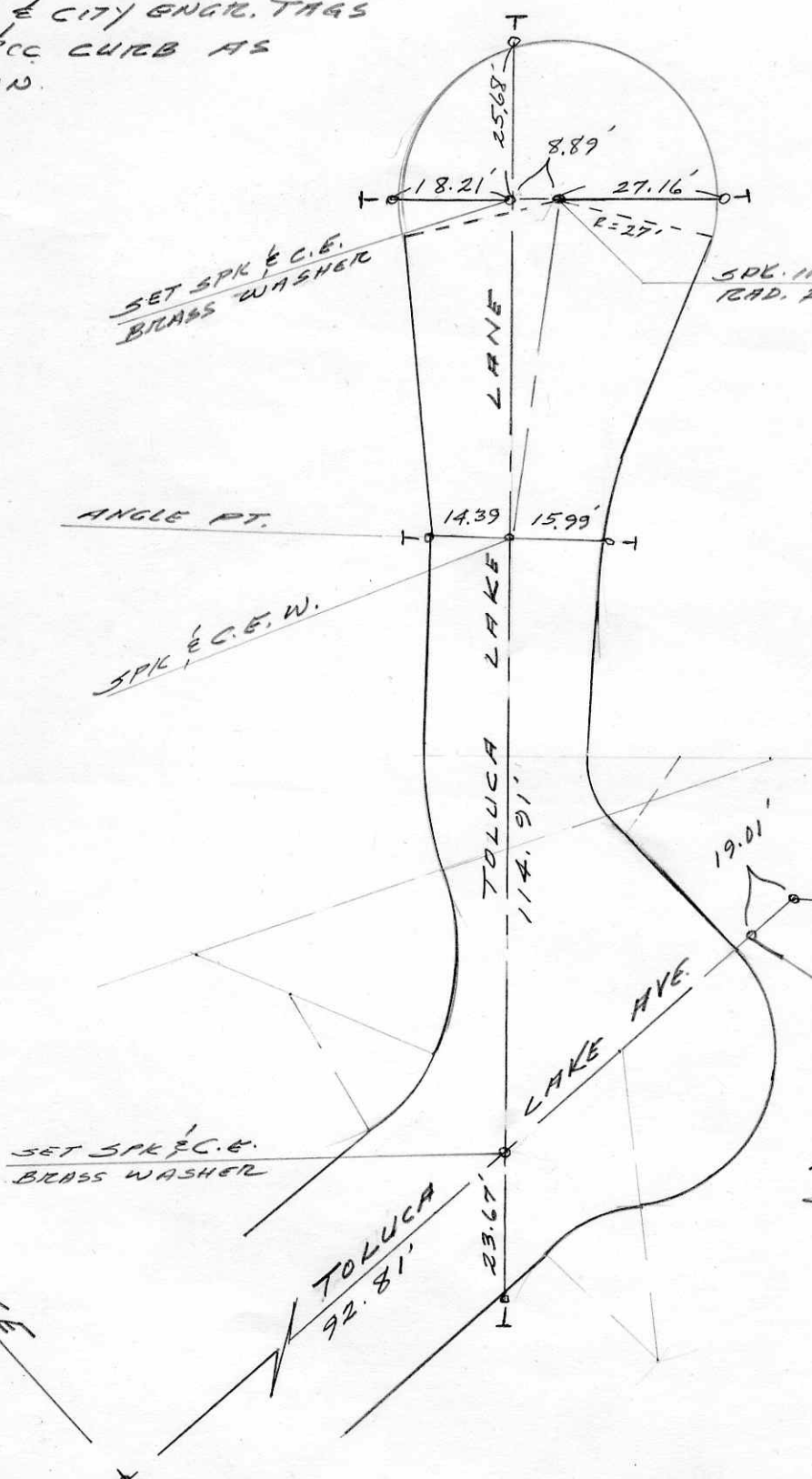
181

ALL TIES ARE
 LEAD & CITY ENGR. TAGS
 IN PCC CURB AS
 SHOWN.



MARCH 14, 1978

MOZENO
 AHATA
 STODDARD
 SCHNAKENBERG



SET SPK & C.E.
 BRASS WASHER

SET PUNCHED SPK.
 IN A.C. ON & PROD.
 66' OFF & S INTERS.

REPLACED R TAG.
 (R.E. 5851) DESTROYED
 BY CONST. WORK WITH
 L & C.E. TAG IN PCC
 DRIVEWAY

ROSE
 &
 ST