

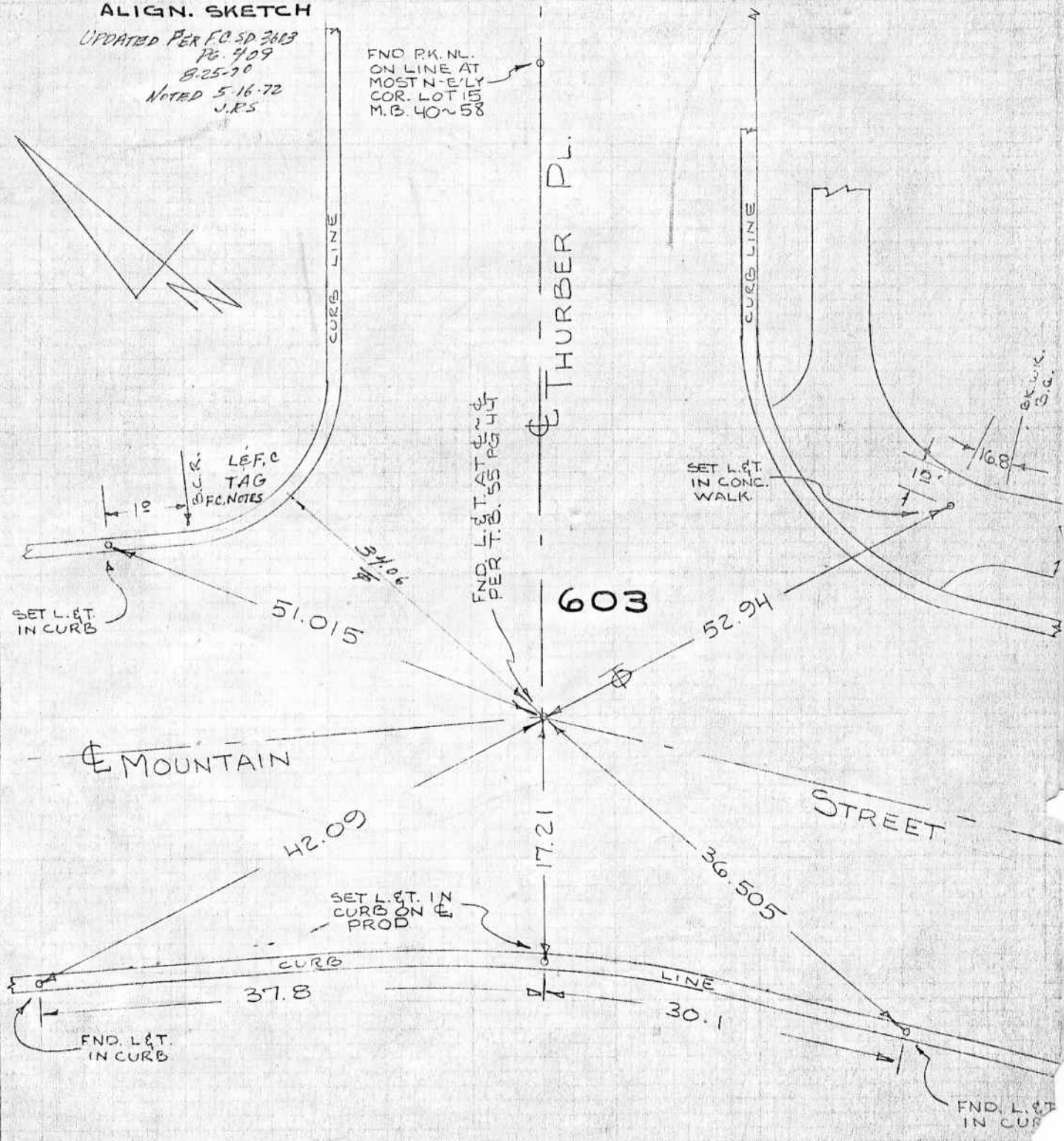
CITY OF GLENDALE - ENGINEERING SECTION - PUBLIC WORKS DIVISION

JOB TITLE	☉ TIE MOUNTAIN ST. & THURBER PLACE	JOB ORDER NO.		SHEET NO. 52 OF 58
		DESIGNED BY		DATE
		CHECKED BY		

NOTE: SEET. B. 118~87 &
T.B. 119~38 FOR
ALIGN. SKETCH

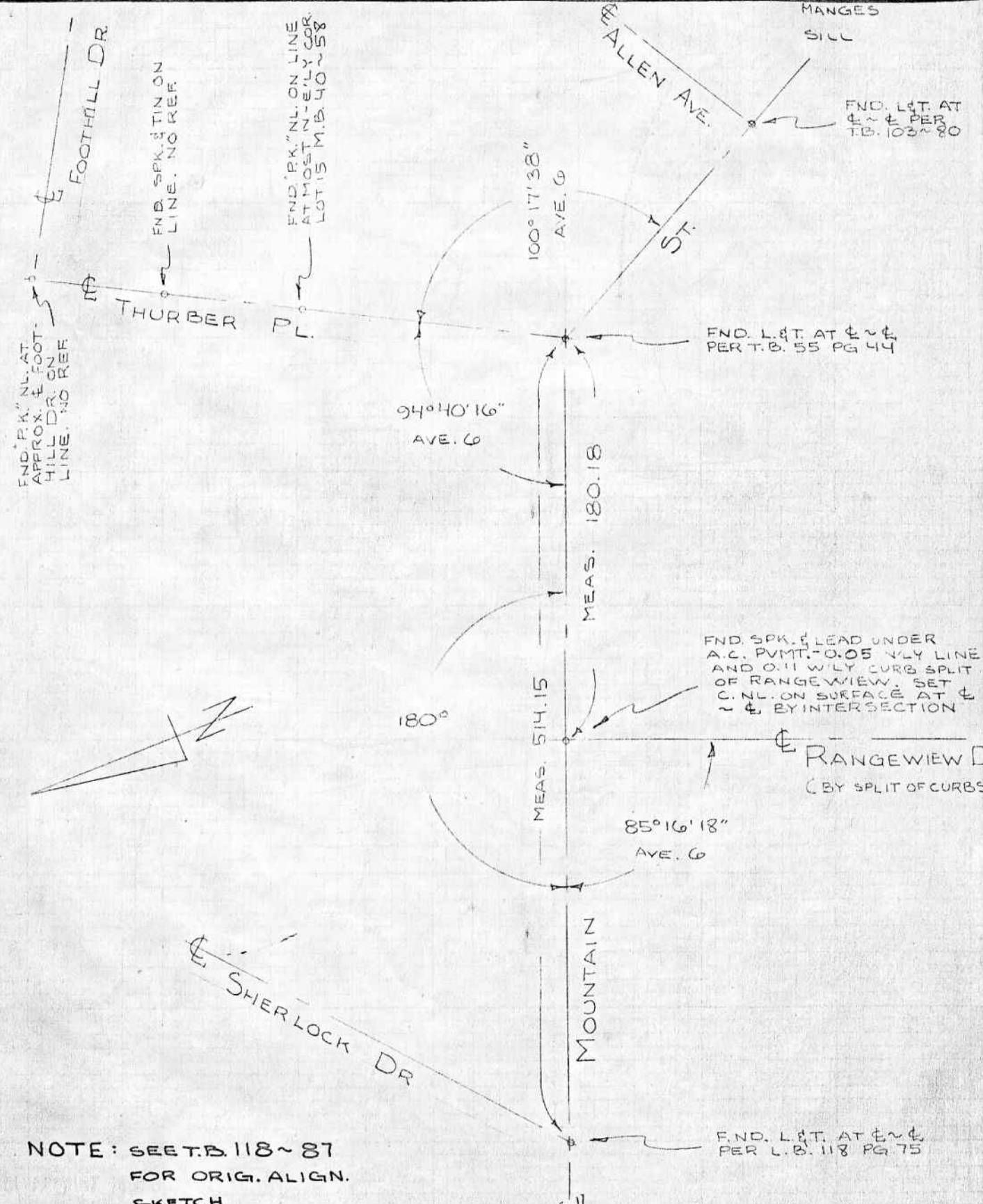
UPDATED PER F.C. SD 3613
Pg. 909
8-25-70
NOTED 5-16-72
J.R.S.

FND P.K. NL.
ON LINE AT
MOST N-E'LY
COR. LOT 15
M.B. 40~58



CITY OF GLENDALE - ENGINEERING SECTION - PUBLIC WORKS DIVISION

JOB TITLE PROJ. 3603 LINE "J" EXT. OF MOUNTAIN	JOB ORDER NO.	SHEET NO. 53 OF 58
ST. ELY OF ELM. AVE. TO THURBER P.L. &	DESIGNED BY	DATE 9-21-66
N'LY ON THURBER P.L.	CHECKED BY	FREEMAN



NOTE: SEE T.B. 118-87 FOR ORIG. ALIGN. SKETCH

CITY OF GLENDALE - ENGINEERING SECTION - PUBLIC WORKS DIVISION

JOB TITLE	ELM AVE. BEL-AIRE TO MOUNTAIN & ALIGNMENT (CONT'D)	JOB ORDER NO.	CHEST NO. 2 OF 58
DESIGNED BY		DATE	
CHECKED BY			

*NOTE: SEE T.B. 119 ~ 38 FOR M.B. 40 ~ 58
ADD. ALIGN. DATA

