

SCOTT ROAD
 @ LAMER STREET
 TIES

95

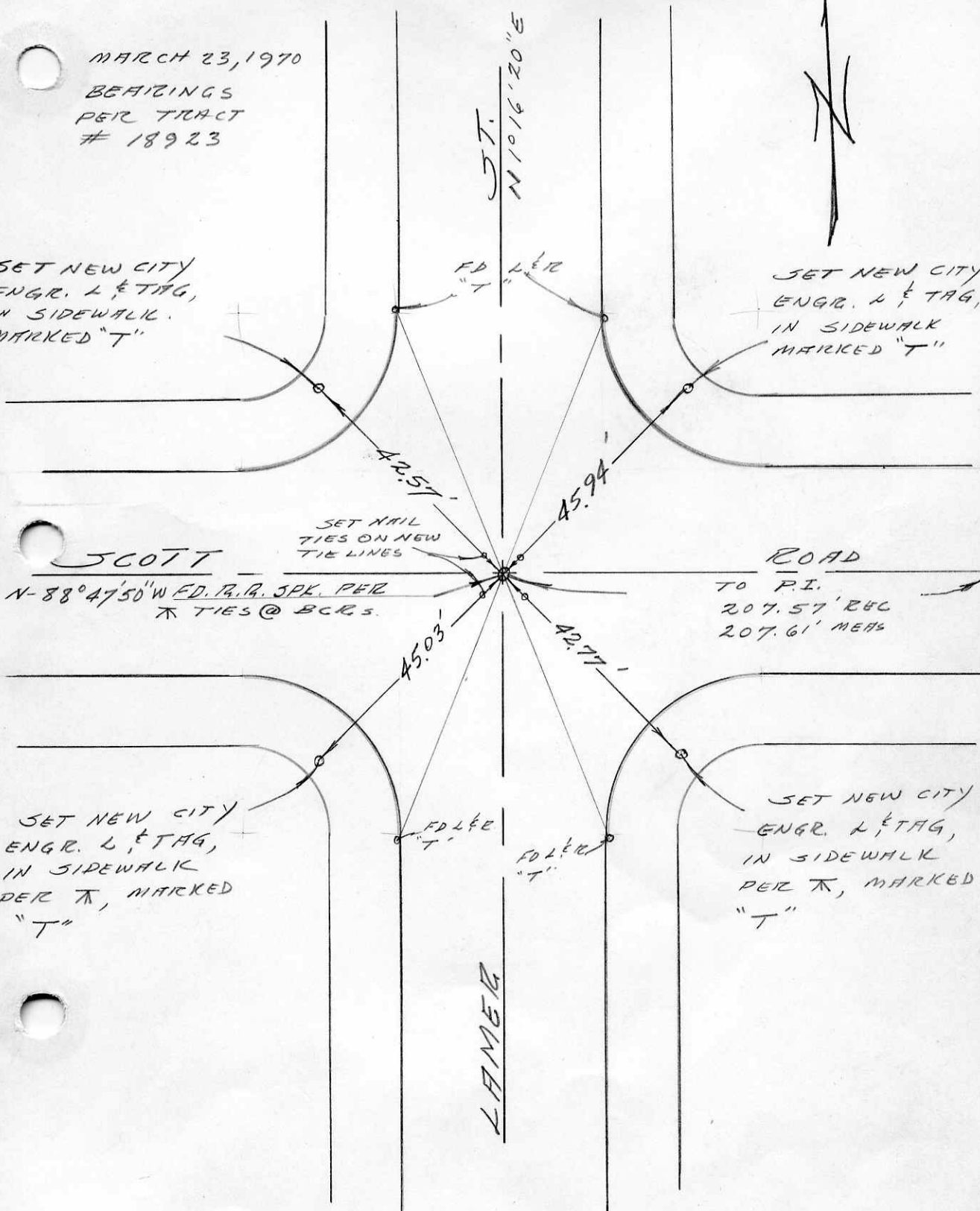
265

MARCH 23, 1970
 BEARINGS
 PER TRACT
 # 18923



SET NEW CITY
 ENGR. L & TAG,
 IN SIDEWALK.
 MARKED "T"

SET NEW CITY
 ENGR. L & TAG,
 IN SIDEWALK
 MARKED "T"



SET NAIL
 TIES ON NEW
 TIE LINES

SCOTT
 N-88°47'50"W FD. P.R. SPK. PER
 TIES @ BCRs.

ROAD
 TO P.I.
 207.57' R&C
 207.61' MEAS

SET NEW CITY
 ENGR. L & TAG,
 IN SIDEWALK
 PER π , MARKED
 "T"

SET NEW CITY
 ENGR. L & TAG,
 IN SIDEWALK
 PER π , MARKED
 "T"

LAMER