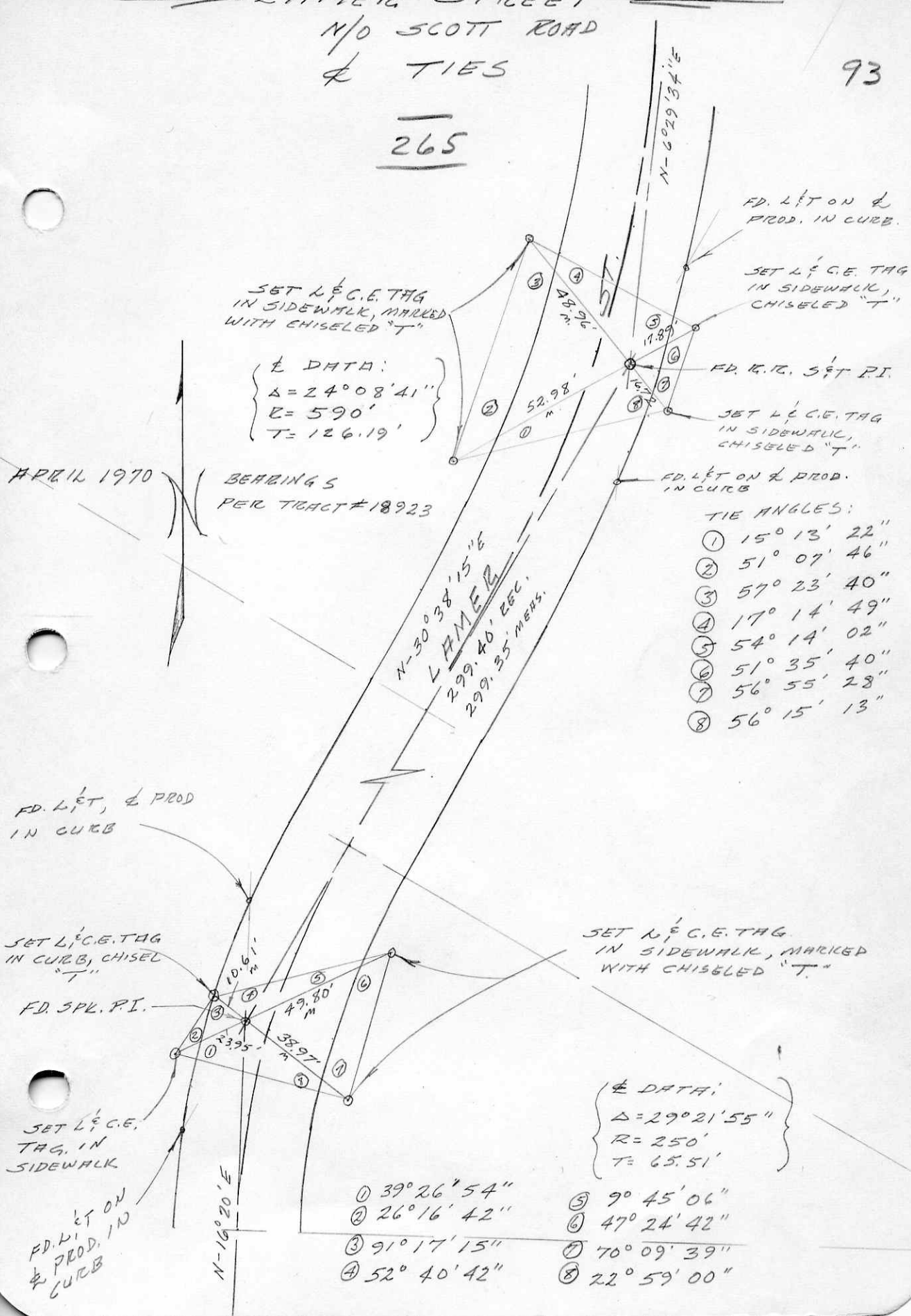


LAMER STREET  
 N/O SCOTT ROAD  
 & TIES

93

265



SET L & C.E. TAG  
 IN SIDEWALK, MARKED  
 WITH CHISELED "T"

{ DATA:  
 $\Delta = 24^{\circ}08'41''$   
 $E = 590'$   
 $T = 126.19'$

APRIL 1970

BEARINGS  
 PER TRACT #18923

FD. LET ON &  
 PROD. IN CURB.

SET L & C.E. TAG  
 IN SIDEWALK,  
 CHISELED "T"

FD. R.T. SET P.I.

SET L & C.E. TAG  
 IN SIDEWALK,  
 CHISELED "T"

FD. LET ON & PROD.  
 IN CURB

- TIE ANGLES:
- ①  $15^{\circ}13'22''$
  - ②  $51^{\circ}07'46''$
  - ③  $57^{\circ}23'40''$
  - ④  $17^{\circ}14'49''$
  - ⑤  $54^{\circ}14'02''$
  - ⑥  $51^{\circ}35'40''$
  - ⑦  $56^{\circ}55'28''$
  - ⑧  $56^{\circ}15'13''$

FD. LET, & PROD  
 IN CURB

SET L & C.E. TAG  
 IN CURB, CHISEL  
 "T"

FD. SPL. P.I.

SET N & C.E. TAG  
 IN SIDEWALK, MARKED  
 WITH CHISELED "T"

SET L & C.E.  
 TAG, IN  
 SIDEWALK

FD. LET ON  
 & PROD. IN  
 CURB

{ DATA:  
 $\Delta = 29^{\circ}21'55''$   
 $R = 250'$   
 $T = 65.51'$

- ①  $39^{\circ}26'54''$
- ②  $26^{\circ}16'42''$
- ③  $91^{\circ}17'15''$
- ④  $52^{\circ}40'42''$
- ⑤  $9^{\circ}45'06''$
- ⑥  $47^{\circ}24'42''$
- ⑦  $70^{\circ}09'39''$
- ⑧  $22^{\circ}59'00''$