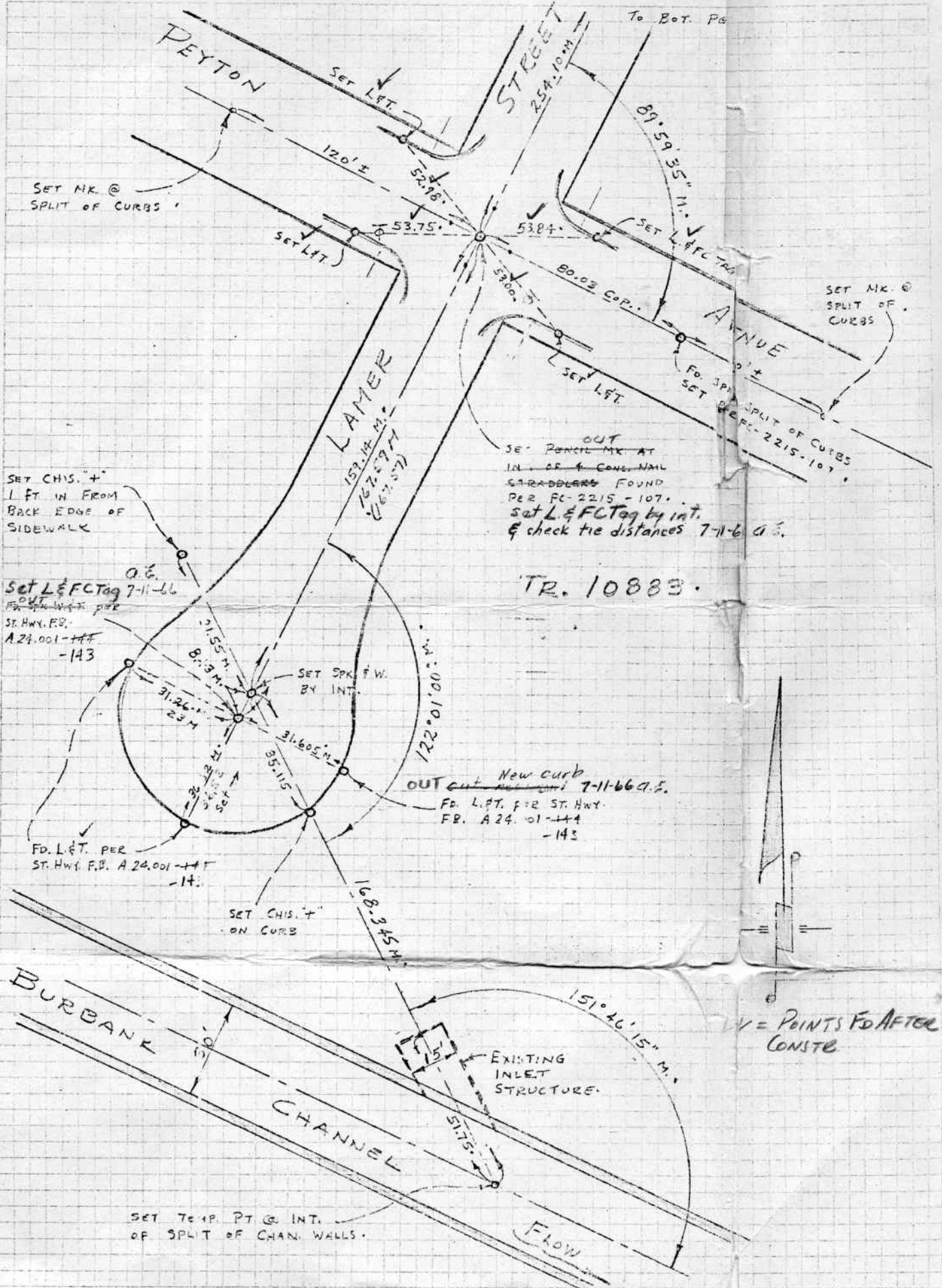


PROJECT McCLURE CHANNEL
 SURVEY BY GRIFFITHS DATE 3-3-64
 REVIEWED BY GM DATE 3-24-64

IN FC 2215 143
 LOS ANGELES COUNTY
 FLOOD CONTROL DISTRICT



SET MK. @
SPLIT OF CURBS

SET MK. @
SPLIT OF
CURBS

SET CHIS. +
1 FT. IN FROM
BACK EDGE OF
SIDEWALK

Set L&FCTag 7-11-66
 ST. HWY. F.B. A 24.001-144
 -143

OUT
 SET Pencil MK AT
 IN. OF 4 CONC. NAIL
 STAPPLERS FOUND
 PER FC-2215-107.
 Set L&FCTag by int.
 & check tie distances 7-11-66 a.s.

TR. 10883.

OUT New curb
 7-11-66 a.s.
 FB. L&FCT. FOR ST. HWY.
 FB. A 24.01-144
 -143

FD. L&FCT. PER
 ST. HWY. F.B. A 24.001-144
 -143

SET CHIS. +
ON CURB

V = POINTS FD AFTER
CONSTE

SET TOP PT @ INT.
OF SPLIT OF CHAN. WALLS.