

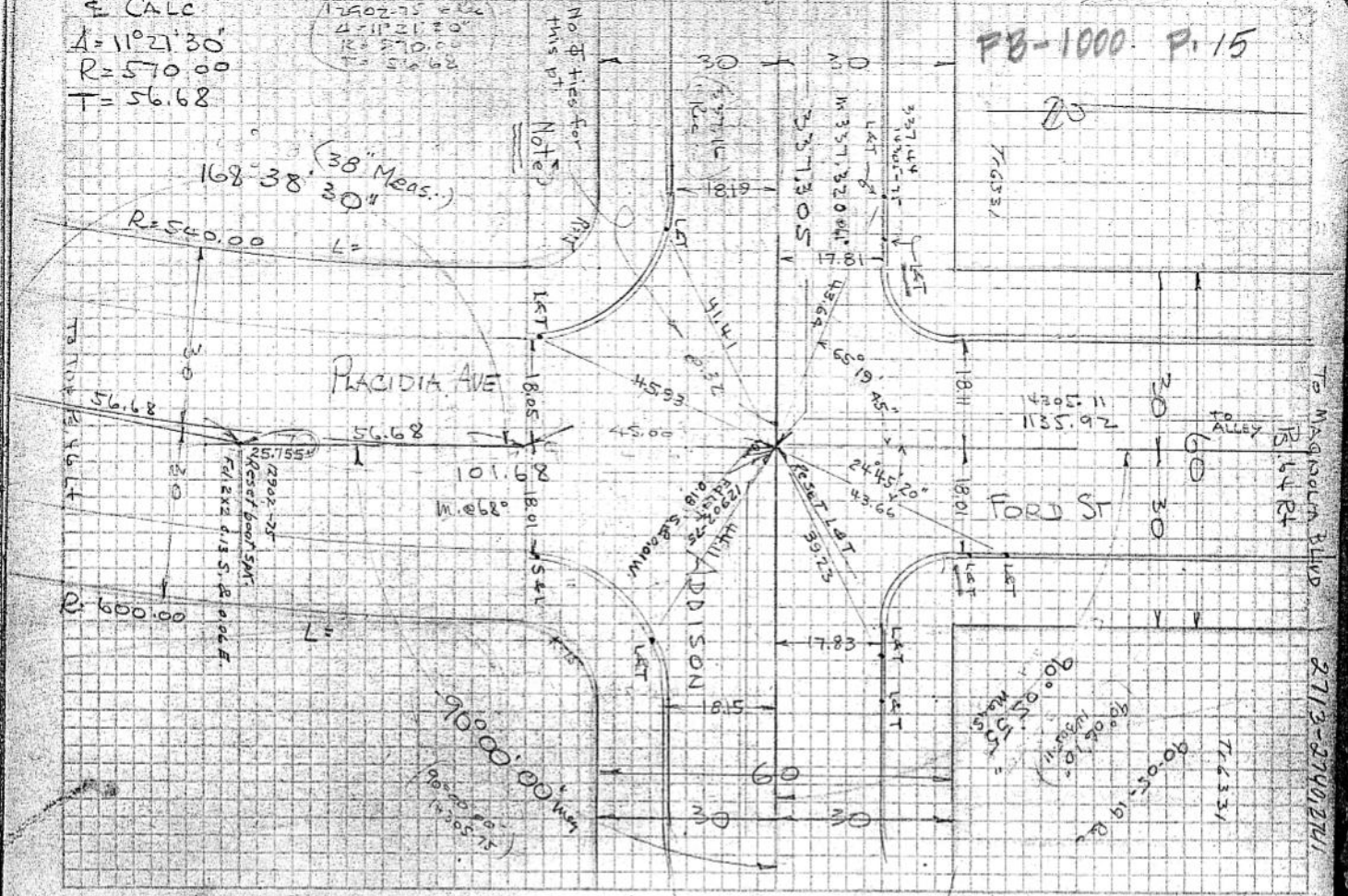
← CALC
 $A = 11021'30"$
 $R = 570.00$
 $T = 56.68$

$17502.75 = R_c$
 $4711'21" = T_c$
 $R = 570.00$
 $T = 56.68$

PB-1000. P. 15

No. of ties for this pt. Notes

$168^{\circ}38'30"$ (38" Meas.)
 $R = 540.00$



2713-2741, 2742

To P.C. 14305-67.

19810-53

